


Product datasheet

Anti-KIF19 antibody ab49330

画像数 1

製品の概要

| | |
|--------------|---|
| 製品名 | Anti-KIF19 antibody |
| 製品の詳細 | Rabbit polyclonal to KIF19 |
| 由来種 | Rabbit |
| アプリケーション | 適用あり: WB, ELISA |
| 種交差性 | 交差種: Human 交差が予測される動物種: Mouse, Rat, Cow  |
| 免疫原 | Synthetic peptide derived from the following sequence: EVSMSYLEIY NEMIRDLLNP SLGYLELRD SKGVIQVAGI TEVSTINAKE , corresponding to amino acids 145-195 of Human KIF19 Run BLAST with ExPASy Run BLAST with NCBI |
| ポジティブ・コントロール | Jurkat cell lysate. |

製品の特性

| | |
|--------|---|
| 製品の状態 | Liquid |
| 保存方法 | Shipped at 4°C. Upon delivery aliquot and store at -20°C. Avoid freeze / thaw cycles. |
| バッファー | Preservative: None Constituents: 2% Sucrose, PBS |
| 精製度 | Immunogen affinity purified |
| ポリ/モノ | ポリクローナル |
| アイソタイプ | IgG |

アプリケーション

Our [Abpromise guarantee](#) covers the use of **ab49330** in the following tested applications.

The application notes include recommended starting dilutions; optimal dilutions/concentrations should be determined by the end user.

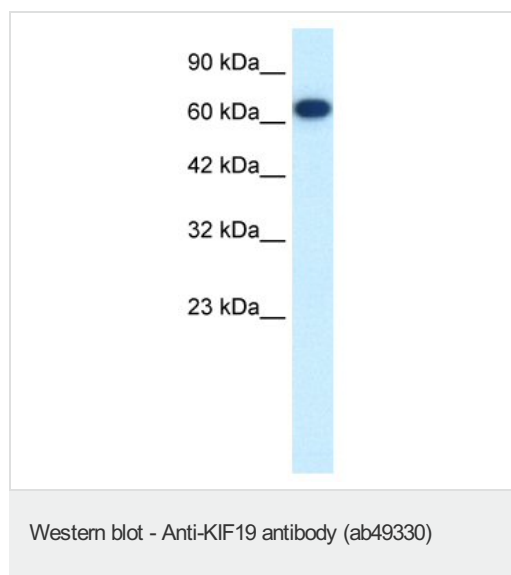
| アプリケーション | Abreviews | 特記事項 |
|----------|-----------|------|
| | | |

| アプリケーション | Abreviews | 特記事項 |
|----------|-----------|---|
| WB | | Use a concentration of 0.125 µg/ml. Predicted molecular weight: 111 kDa. Good results were obtained when blocked with 5% non-fat dry milk in 0.05% PBS-T. |
| ELISA | | Use at an assay dependent concentration. ELISA titre using peptide based assay: 1:62500. |

ターゲット情報

関連性 A hypothetical protein found on chromosome 17

画像



Anti-KIF19 antibody (ab49330) at 0.125 µg/ml
+ Jurkat cell lysate at 10 µg

Secondary

HRP conjugated anti-Rabbit IgG at 1/50000 dilution

Predicted band size: 111 kDa

Observed band size: ~65 kDa

Gel concentration 12%

Please note: All products are "FOR RESEARCH USE ONLY AND ARE NOT INTENDED FOR DIAGNOSTIC OR THERAPEUTIC USE"

Our Abpromise to you: Quality guaranteed and expert technical support

- Replacement or refund for products not performing as stated on the datasheet
- Valid for 12 months from date of delivery
- Response to your inquiry within 24 hours
- We provide support in Chinese, English, French, German, Japanese and Spanish
- Extensive multi-media technical resources to help you
- We investigate all quality concerns to ensure our products perform to the highest standards

If the product does not perform as described on this datasheet, we will offer a refund or replacement. For full details of the Abpromise, please visit <https://www.abcam.co.jp/abpromise> or contact our technical team.

Terms and conditions

- Guarantee only valid for products bought direct from Abcam or one of our authorized distributors