

Product datasheet

Anti-MEK4 (phospho T261) antibody ab47277

画像数 1

製品の概要

製品名	Anti-MEK4 (phospho T261) antibody
製品の詳細	Rabbit polyclonal to MEK4 (phospho T261)
由来種	Rabbit
特異性	Detects endogenous levels of MKK4 only when phosphorylated at threonine 261.
アプリケーション	適用あり: ELISA, IHC-P
種交差性	交差種: Human 交差が予測される動物種: Mouse, Rat
免疫原	Synthetic phosphopeptide: AKT _P RD, corresponding to amino acids 259-263 of Human MKK4 from around the phosphorylation site of threonine 261. Run BLAST with Run BLAST with
ポジティブ・コントロール	Human breast carcinoma.

製品の特性

製品の状態	Liquid
保存方法	Shipped at 4°C. Store at -20°C. Stable for 12 months at -20°C.
バッファー	Preservative: 0.02% Sodium Azide Constituents: 50% Glycerol, PBS (without Mg ²⁺ and Ca ²⁺), 150mM Sodium chloride, pH 7.4
精製度	Immunogen affinity purified
特記事項(精製)	This antibody was affinity purified from rabbit antiserum by affinity chromatography using epitope specific phosphopeptide. The antibody against non-phosphopeptide was removed by chromatography using non-phosphopeptide corresponding to the phosphorylation site.
ポリモノ	ポリクローナル
アイソタイプ	IgG

アプリケーション

Our [Abpromise guarantee](#) covers the use of **ab47277** in the following tested applications.

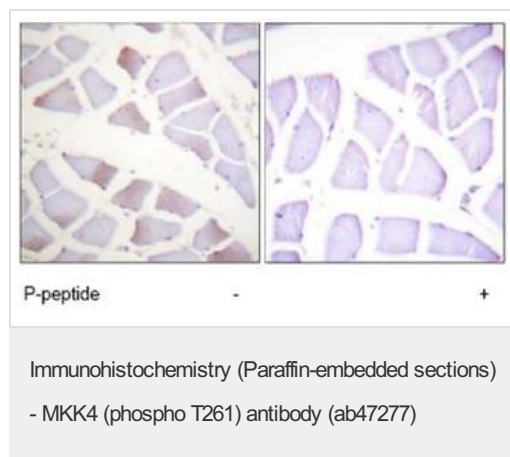
The application notes include recommended starting dilutions; optimal dilutions/concentrations should be determined by the end user.

アプリケーション	Abreviews	特記事項
ELISA		1/10000.
IHC-P		Use at an assay dependent concentration.

ターゲット情報

機能	Dual specificity kinase that activates the JUN kinases MAPK8 (JNK1) and MAPK9 (JNK2) as well as MAPK14 (p38) but not MAPK1 (ERK2) or MAPK3 (ERK1).
組織特異性	Abundant expression is seen in the skeletal muscle. It is also widely expressed in other tissues.
配列類似性	Belongs to the protein kinase superfamily. STE Ser/Thr protein kinase family. MAP kinase kinase subfamily. Contains 1 protein kinase domain.
翻訳後修飾	Activated by phosphorylation on Ser/Thr by MAP kinase kinase kinases.

画像



ab47277, at 1/50 dilution, staining Human breast carcinoma by Immunohistochemistry, Paraffin embedded tissue. Left panel: untreated; right panel: treated with synthesized phosphopeptide.

Please note: All products are "FOR RESEARCH USE ONLY AND ARE NOT INTENDED FOR DIAGNOSTIC OR THERAPEUTIC USE"

Our Abpromise to you: Quality guaranteed and expert technical support

- Replacement or refund for products not performing as stated on the datasheet
- Valid for 12 months from date of delivery
- Response to your inquiry within 24 hours
- We provide support in Chinese, English, French, German, Japanese and Spanish
- Extensive multi-media technical resources to help you
- We investigate all quality concerns to ensure our products perform to the highest standards

If the product does not perform as described on this datasheet, we will offer a refund or replacement. For full details of the Abpromise, please visit <https://www.abcam.co.jp/abpromise> or contact our technical team.

Terms and conditions

- Guarantee only valid for products bought direct from Abcam or one of our authorized distributors