

Product datasheet

Anti-Estrogen Related Receptor alpha antibody [H5844] ab41868

3 References [画像数 2](#)

製品の概要

製品名	Anti-Estrogen Related Receptor alpha antibody [H5844]
製品の詳細	Mouse monoclonal [H5844] to Estrogen Related Receptor alpha
由来種	Mouse
特異性	This antibody does not recognize ERR beta and gamma.
アプリケーション	適用あり: WB, ELISA, IP, IHC-P
種交差性	交差種: Rat, Human
免疫原	Recombinant fragment: ACKAFFKRTI QGSIEYSCPA SNECEITKRR RKACQACRFT KCLRVGMLKE GVRLDRVRGG RQKYKRRPEV DPLP, corresponding to amino acids 98-171 of Human Estrogen Related Receptor alpha Run BLAST with ExPASy Run BLAST with NCBI
ポジティブ・コントロール	Rat Cerebrum and Human Heart Myocardium.

製品の特性

製品の状態	Liquid
保存方法	Shipped at 4°C. Store at +4°C short term (1-2 weeks). Store at -20°C or -80°C. Avoid freeze / thaw cycle.
バッファー	Preservative: 0.1% Sodium azide Physiological saline.
特記事項(精製)	Purified from ascites by ammonium sulfate fractionation.
ポリ/モノ	モノクローナル
クローン名	H5844
アイソタイプ	IgG2a

アプリケーション

Our [Abpromise guarantee](#) covers the use of **ab41868** in the following tested applications.

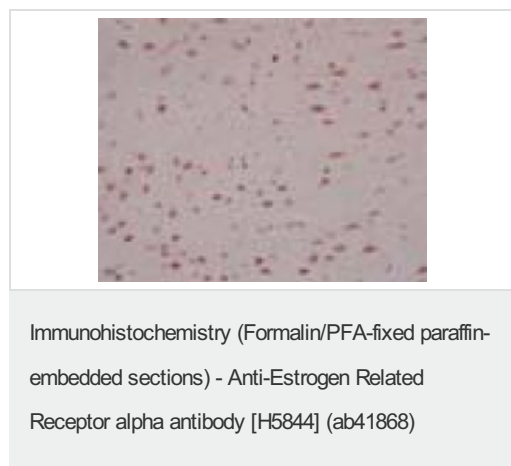
The application notes include recommended starting dilutions; optimal dilutions/concentrations should be determined by the end user.

アプリケーション	Abreviews	特記事項
WB		Use a concentration of 1 µg/ml. Predicted molecular weight: 55 kDa.
ELISA		Use a concentration of 0.2 µg/ml.
IP		Use at an assay dependent concentration.
IHC-P		Use a concentration of 1 - 10 µg/ml.

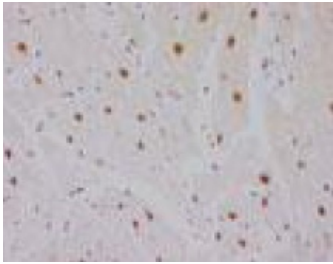
ターゲット情報

機能	Binds to an ERR-alpha response element (ERRE) containing a single consensus half-site, 5'-TNAAGGTCA-3'. Can bind to the medium-chain acyl coenzyme A dehydrogenase (MCAD) response element NRRE-1 and may act as an important regulator of MCAD promoter. Binds to the C1 region of the lactoferrin gene promoter. Requires dimerization and the coactivator, PGC-1A, for full activity. The ERRalpha/PGC1alpha complex is a regulator of energy metabolism.
配列類似性	Belongs to the nuclear hormone receptor family. NR3 subfamily. Contains 1 nuclear receptor DNA-binding domain.
翻訳後修飾	Phosphorylation on Ser-19 enhances sumoylation on Lys-14 increasing repression of transcriptional activity. Sumoylated by SUMO2. Main site is Lys-14 which is enhanced by phosphorylation on Ser-19, cofactor activation, and by interaction with PIAS4. Sumoylation enhances repression of transcriptional activity, but has no effect on subcellular location nor on DNA binding.
細胞内局在	Nucleus.

画像



ab41868 staining estrogen related receptor alpha in Rat Cerebrum (1-10 ug/mL) by immunohistochemistry, formalin-fixed paraffin embedded sections.



ab41868 staining estrogen related receptor alpha in Human Heart Myocardium (1-10 ug/mL) by immunohistochemistry, formalin-fixed paraffin embedded sections.

Immunohistochemistry (Formalin/PFA-fixed paraffin-embedded sections) - Anti-Estrogen Related Receptor alpha antibody [H5844] (ab41868)

Please note: All products are "FOR RESEARCH USE ONLY AND ARE NOT INTENDED FOR DIAGNOSTIC OR THERAPEUTIC USE"

Our Abpromise to you: Quality guaranteed and expert technical support

- Replacement or refund for products not performing as stated on the datasheet
- Valid for 12 months from date of delivery
- Response to your inquiry within 24 hours
- We provide support in Chinese, English, French, German, Japanese and Spanish
- Extensive multi-media technical resources to help you
- We investigate all quality concerns to ensure our products perform to the highest standards

If the product does not perform as described on this datasheet, we will offer a refund or replacement. For full details of the Abpromise, please visit <https://www.abcam.co.jp/abpromise> or contact our technical team.

Terms and conditions

- Guarantee only valid for products bought direct from Abcam or one of our authorized distributors