

Product datasheet

Anti-ASK1 antibody ab39639

画像数 2

製品の概要

製品名	Anti-ASK1 antibody
製品の詳細	Rabbit polyclonal to ASK1
由来種	Rabbit
特異性	ab39639 detects endogenous levels of ASK1 protein.
アプリケーション	適用あり: WB, IHC-P, ELISA
種交差性	交差種: Human
免疫原	Synthetic peptide (non-phosphorylated) derived from Human ASK1 around the phosphorylation site of Serine 83.
ポジティブ・コントロール	MDA-MB-435 cells; Human breast carcinoma.

製品の特性

製品の状態	Liquid
保存方法	Shipped at 4°C. Upon delivery aliquot and store at -20°C. Avoid freeze / thaw cycles.
バッファー	Preservative: 0.02% Sodium Azide Constituents: 50% Glycerol, PBS, 150mM Sodium chloride, pH 7.4
精製度	Immunogen affinity purified
ポリ/モノ	ポリクローナル
アイソタイプ	IgG

アプリケーション

Our [Abpromise guarantee](#) covers the use of **ab39639** in the following tested applications.

The application notes include recommended starting dilutions; optimal dilutions/concentrations should be determined by the end user.

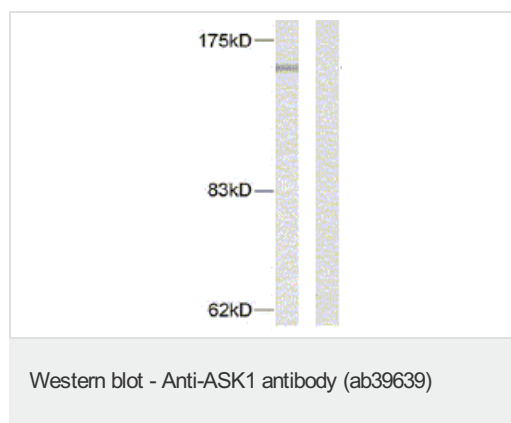
アプリケーション	Abreviews	特記事項
WB		1/500 - 1/1000. Detects a band of approximately 155 kDa (predicted molecular weight: 155 kDa).
IHC-P		Use at an assay dependent concentration.

アプリケーション	Abreviews	特記事項
ELISA		1/20000.

ターゲット情報

機能	Component of a protein kinase signal transduction cascade. Phosphorylates and activates MAP2K4 and MAP2K6, which in turn activate the JNK and p38 MAP kinases, respectively. Overexpression induces apoptotic cell death.
組織特異性	Abundantly expressed in heart and pancreas.
配列類似性	Belongs to the protein kinase superfamily. STE Ser/Thr protein kinase family. MAP kinase kinase kinase subfamily. Contains 1 protein kinase domain.
翻訳後修飾	Dephosphorylated and activated by PGAM5.

画像



All lanes : Anti-ASK1 antibody (ab39639) at 1/500 dilution

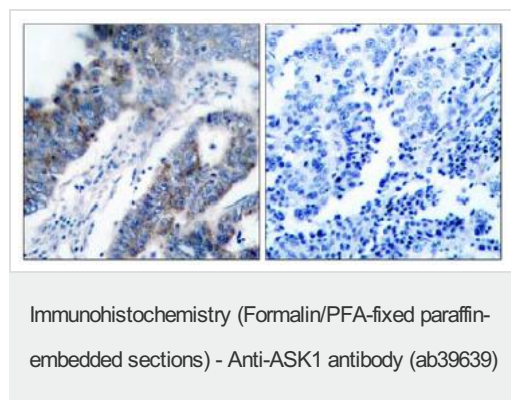
Lane 1 : MDA-MB-435 cell extracts

Lane 2 : MDA-MB-435 cell extracts with synthesized peptide (peptide preincubated with ab39639)

Predicted band size: 155 kDa

Observed band size: 155 kDa

5-30µg of cell extract was loaded per lane.



ab39639, at 1/50 dilution, staining ASK1 in Human breast carcinoma by Immunohistochemistry, Paraffin embedded tissue.

Left: untreated; right: treated with synthetic peptide.

Please note: All products are "FOR RESEARCH USE ONLY AND ARE NOT INTENDED FOR DIAGNOSTIC OR THERAPEUTIC USE"

Our Abpromise to you: Quality guaranteed and expert technical support

- Replacement or refund for products not performing as stated on the datasheet
- Valid for 12 months from date of delivery
- Response to your inquiry within 24 hours

- We provide support in Chinese, English, French, German, Japanese and Spanish
- Extensive multi-media technical resources to help you
- We investigate all quality concerns to ensure our products perform to the highest standards

If the product does not perform as described on this datasheet, we will offer a refund or replacement. For full details of the Abpromise, please visit <https://www.abcam.co.jp/abpromise> or contact our technical team.

Terms and conditions

- Guarantee only valid for products bought direct from Abcam or one of our authorized distributors