

Product datasheet

Anti-zona radiata antibody ab36803

画像数 2

製品の概要

製品名	Anti-zona radiata antibody
製品の詳細	Rabbit polyclonal to zona radiata
由来種	Rabbit
特異性	Cross reactivity with zona pellucida proteins may be observed in fish ovaries or eggs.
アプリケーション	適用あり: WB, ELISA
種交差性	交差種: Rainbow trout
免疫原	Eggshell proteins (zona radiata proteins and small amounts of zona pellucida proteins) purified from plasma of 17 beta estradiol treated Atlantic salmon

製品の特性

製品の状態	Liquid
保存方法	Shipped at 4°C. Store at +4°C short term (1-2 weeks). Store at -20°C or -80°C. Avoid freeze / thaw cycle.
バッファー	Preservative: 0.1% Sodium Azide Constituents: 1% BSA, 0.15M Sodium chloride, 0.1M Sodium phosphate. pH 7.4
精製度	Protein G purified
ポリ/モノ	ポリクローナル
アイソタイプ	IgG

アプリケーション

Our [Abpromise guarantee](#) covers the use of **ab36803** in the following tested applications.

The application notes include recommended starting dilutions; optimal dilutions/concentrations should be determined by the end user.

アプリケーション	Abreviews	特記事項
WB		
ELISA		

追加情報

ELISA: 1/50 - 1/2000 (Salmoniformes). As the antibody is dissolved in a buffer containing BSA it

is not recommended to use for coating.

WB: 1/50 - 1/2000 (Salmoniformes). Predicted molecular weight: 45 kDa.

Note: for both applications 1/50 - 1/200 working dilutions are recommended when dealing with samples from other species.

Not yet tested in other applications.

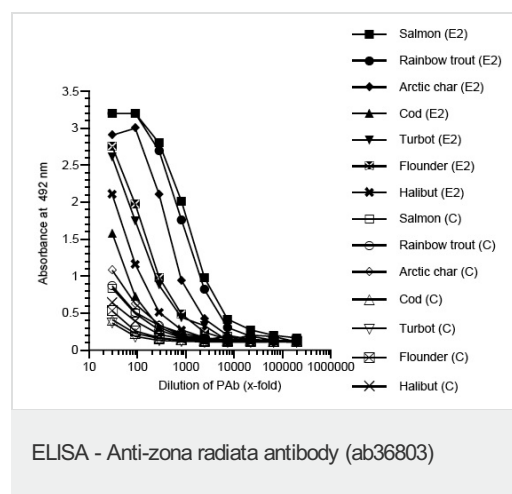
Optimal dilutions/concentrations should be determined by the end user.

ターゲット情報

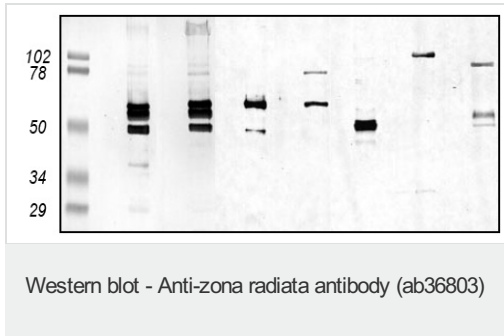
関連性

Zona radiata is a thickened, rather complex egg membrane of teleost fishes, which often has a radiate appearance. It is formed at the surface of the egg by the ooplasm, or the ooplasm and the follicle cells and hence should be regarded as a true vitelline membrane. May be overlain by the chorion, the zona radiata underlies or overlies a homogeneous vitelline egg membrane.

画像



Coating with plasma (diluted 1:1000) from 17 beta-estradiol treated (E2) or control (C) fish.



All lanes : Anti-zona radiata antibody (ab36803) at 1/100 dilution

Lane 2 : Plasma from control Salmon

Lane 3 : Plasma from 17 β -estradiol treated Salmon

Lane 4 : Plasma from control Rainbow Trout

Lane 5 : Plasma from 17 β -estradiol treated Rainbow trout

Lanes 6 & 14 : Plasma from control Arctic char

Lanes 7 & 15 : Plasma from 17 β -estradiol treated Arctic char

Lane 8 : Plasma from control Atlantic cod

Lane 9 : Plasma from 17 β -estradiol treated Atlantic cod

Lane 10 : Plasma from control Turbot

Lane 11 : Plasma from 17 β -estradiol treated Turbot

Lane 12 : Plasma from control Flounder

Lane 13 : Plasma from 17 β -estradiol treated Flounder

Predicted band size: 45 kDa

Please note: All products are "FOR RESEARCH USE ONLY AND ARE NOT INTENDED FOR DIAGNOSTIC OR THERAPEUTIC USE"

Our Abpromise to you: Quality guaranteed and expert technical support

- Replacement or refund for products not performing as stated on the datasheet
- Valid for 12 months from date of delivery
- Response to your inquiry within 24 hours
- We provide support in Chinese, English, French, German, Japanese and Spanish
- Extensive multi-media technical resources to help you
- We investigate all quality concerns to ensure our products perform to the highest standards

If the product does not perform as described on this datasheet, we will offer a refund or replacement. For full details of the Abpromise, please visit <https://www.abcam.co.jp/abpromise> or contact our technical team.

Terms and conditions

- Guarantee only valid for products bought direct from Abcam or one of our authorized distributors