

## Product datasheet

# Anti-ITK / EMT antibody ab32113

3 References [画像数 2](#)

### 製品の概要

製品名	Anti-ITK / EMT antibody
製品の詳細	Rabbit polyclonal to ITK / EMT
由来種	Rabbit
アプリケーション	<b>適用あり:</b> WB, IHC-P <b>適用なし:</b> Flow Cyt or IP
種交差性	<b>交差種:</b> Mouse, Rat, Human
免疫原	A synthetic peptide corresponding to residues near the C terminus of human Emtk/ITK/Tsk.
ポジティブ・コントロール	WB: K562 and A431 cell lysates. IHC-P: Normal lymph node tissue.

### 製品の特性

製品の状態	Liquid
保存方法	Shipped at 4°C. Upon delivery aliquot and store at -20°C. Avoid freeze / thaw cycles.
バッファー	PBS 49%, Sodium azide 0.01%, Glycerol 50%, BSA 0.05%
精製度	Protein A purified
ポリ/モノ	ポリクローナル
アイソタイプ	IgG

### アプリケーション

Our [Abpromise guarantee](#) covers the use of **ab32113** in the following tested applications.

The application notes include recommended starting dilutions; optimal dilutions/concentrations should be determined by the end user.

アプリケーション	Abreviews	特記事項
----------	-----------	------

WB

IHC-P

### 追加情報

IHC-P: 1/50 - 1/100.

WB: 1/1000. Detects a band of approximately 68 kDa (predicted molecular weight: 72 kDa).

Is unsuitable for FACS or IP.

Not yet tested in other applications.

Optimal dilutions/concentrations should be determined by the end user.

## ターゲット情報

### 機能

Plays a role in T-cell proliferation and differentiation.

### 組織特異性

T-cell lines and natural killer cell lines.

### 関連疾患

Defects in ITK are the cause of lymphoproliferative syndrome EBV-associated autosomal type 1 (LPSA1) [MIM:613011]. LPSA1 is a rare immunodeficiency characterized by extreme susceptibility to infection with Epstein-Barr virus (EBV). Inadequate immune response to EBV can have a fatal outcome. Clinical features include splenomegaly, lymphadenopathy, anemia, thrombocytopenia, pancytopenia, recurrent infections. There is an increased risk for lymphoma.

### 配列類似性

Belongs to the protein kinase superfamily. Tyr protein kinase family. TEC subfamily.

Contains 1 Btk-type zinc finger.

Contains 1 PH domain.

Contains 1 protein kinase domain.

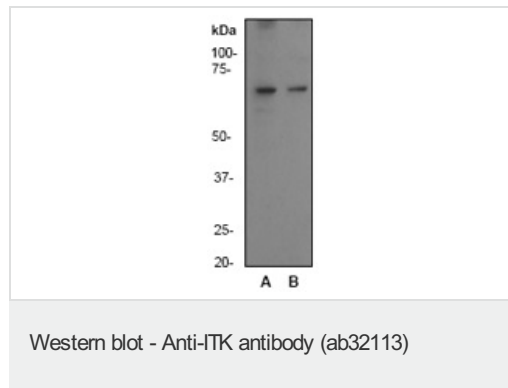
Contains 1 SH2 domain.

Contains 1 SH3 domain.

### 細胞内局在

Cell membrane. Localizes to cell surface receptors in the plasma membrane after stimulation with respective receptors (TCR, CD28, CD2) in T-cells.

## 画像



**All lanes :** Anti-ITK / EMT antibody (ab32113) at 1/1000 dilution

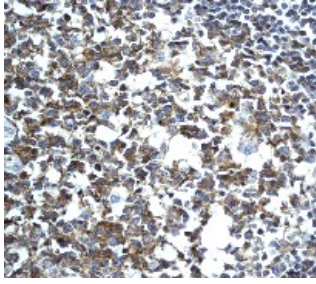
**Lane 1 :** K562 cell lysate

**Lane 2 :** A431 cell lysate

**Predicted band size:** 72 kDa

**Observed band size:** 68 kDa

[why is the actual band size different from the predicted?](#)



Ab32113, at a 1/50 dilution, staining ITK in paraffin embedded normal lymph node tissue by Immunohistochemistry.

Immunohistochemistry (Formalin/PFA-fixed paraffin-embedded sections) - Anti-ITK antibody (ab32113)

**Please note:** All products are "FOR RESEARCH USE ONLY AND ARE NOT INTENDED FOR DIAGNOSTIC OR THERAPEUTIC USE"

### Our Abpromise to you: Quality guaranteed and expert technical support

---

- Replacement or refund for products not performing as stated on the datasheet
- Valid for 12 months from date of delivery
- Response to your inquiry within 24 hours
- We provide support in Chinese, English, French, German, Japanese and Spanish
- Extensive multi-media technical resources to help you
- We investigate all quality concerns to ensure our products perform to the highest standards

If the product does not perform as described on this datasheet, we will offer a refund or replacement. For full details of the Abpromise, please visit <https://www.abcam.co.jp/abpromise> or contact our technical team.

### Terms and conditions

---

- Guarantee only valid for products bought direct from Abcam or one of our authorized distributors