

Product datasheet

Anti-Hepsin antibody ab31148

★☆☆☆☆ 1 Abreviews [画像数 1](#)

製品の概要

製品名	Anti-Hepsin antibody
製品の詳細	Rabbit polyclonal to Hepsin
由来種	Rabbit
特異性	This antibody specifically recognized recombinant human hepsin in Western blot analysis
アプリケーション	適用あり: IHC-P, ELISA, WB, Flow Cyt
種交差性	交差種: Human
免疫原	Synthetic peptide (Human).

製品の特性

製品の状態	Liquid
保存方法	Shipped at 4°C. Upon delivery aliquot and store at -20°C. Avoid freeze / thaw cycles.
バッファー	Preservative: 0.02% Sodium Azide Constituents: 0.14M Sodium chloride, 10mM PBS, pH 7.2
精製度	Immunogen affinity purified
特記事項(精製)	This antibody was purified by hepsin (peptide) coupling chromatography. Purity was determined by SDS PAGE (blue stain), showing that the IgG constitute was 90% of total protein.
ポリ/モノ	ポリクローナル
アイソタイプ	IgG

アプリケーション

Our [Abpromise guarantee](#) covers the use of **ab31148** in the following tested applications.

The application notes include recommended starting dilutions; optimal dilutions/concentrations should be determined by the end user.

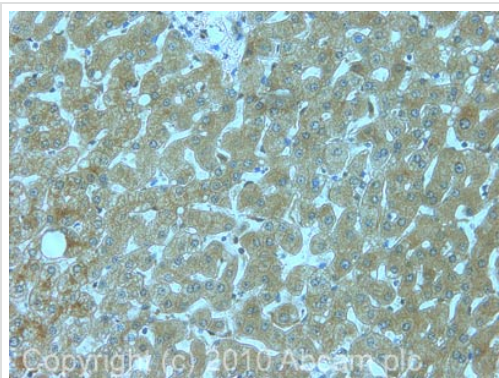
アプリケーション	Abreviews	特記事項
IHC-P		Use at an assay dependent concentration. Perform heat mediated antigen retrieval with citrate buffer pH 6 before commencing with IHC staining protocol.

アプリケーション	Abreviews	特記事項
ELISA		1/50000.
WB	★☆☆☆☆	Use at an assay dependent concentration. Predicted molecular weight: 46 kDa.
Flow Cyt		Use at an assay dependent concentration. ab171870 - Rabbit polyclonal IgG, is suitable for use as an isotype control with this antibody.

ターゲット情報

機能	Plays an essential role in cell growth and maintenance of cell morphology.
組織特異性	Present in most tissues, with the highest level in liver.
配列類似性	Belongs to the peptidase S1 family. Contains 1 peptidase S1 domain. Contains 1 SRCR domain.
細胞内局在	Membrane.

画像



Immunohistochemistry (Formalin/PFA-fixed paraffin-embedded sections) - Anti-Hepsin antibody (ab31148)

IHC image of ab31148 staining in human liver formalin fixed paraffin embedded tissue section, performed on a Leica Bond™ system using the standard protocol F. The section was pre-treated using heat mediated antigen retrieval with sodium citrate buffer (pH6, epitope retrieval solution 1) for 20 mins. The section was then incubated with ab31148, 5µg/ml, for 15 mins at room temperature and detected using an HRP conjugated compact polymer system. DAB was used as the chromogen. The section was then counterstained with haematoxylin and mounted with DPX.

For other IHC staining systems (automated and non-automated) customers should optimize variable parameters such as antigen retrieval conditions, primary antibody concentration and antibody incubation times.

Please note: All products are "FOR RESEARCH USE ONLY AND ARE NOT INTENDED FOR DIAGNOSTIC OR THERAPEUTIC USE"

Our Abpromise to you: Quality guaranteed and expert technical support

- Replacement or refund for products not performing as stated on the datasheet
- Valid for 12 months from date of delivery
- Response to your inquiry within 24 hours

- We provide support in Chinese, English, French, German, Japanese and Spanish
- Extensive multi-media technical resources to help you
- We investigate all quality concerns to ensure our products perform to the highest standards

If the product does not perform as described on this datasheet, we will offer a refund or replacement. For full details of the Abpromise, please visit <https://www.abcam.co.jp/abpromise> or contact our technical team.

Terms and conditions

- Guarantee only valid for products bought direct from Abcam or one of our authorized distributors