


Product datasheet

Anti-CGI 62 antibody ab28521

画像数 2

製品の概要

| | |
|--------------|--|
| 製品名 | Anti-CGI 62 antibody |
| 製品の詳細 | Rabbit polyclonal to CGI 62 |
| 由来種 | Rabbit |
| アプリケーション | 適用あり: WB, ELISA, IHC-P |
| 種交差性 | 交差種: Human 交差が予測される動物種: Rat  |
| 免疫原 | Synthetic peptide: AAPHAGANVK PRNSTPPSLA RNPAGVLTN KRKTYTESYI ARPDGDCASS, corresponding to amino acids 230-279 of Human CGI 62. Immunogen の所有権に関して. Run BLAST with ExPASy Run BLAST with NCBI |
| ポジティブ・コントロール | Fetal brain lysate for Western blot, and human kidney for Immunohistochemistry (paraffin embedded). |

製品の特性

| | |
|--------|---|
| 製品の状態 | Liquid |
| 保存方法 | Shipped at 4°C. Upon delivery aliquot and store at -20°C. Avoid freeze / thaw cycles. |
| バッファー | Preservative: None Constituents: 2% Sucrose, PBS. |
| 精製度 | Protein A purified |
| ポリ/モノ | ポリクローナル |
| アイソタイプ | IgG |

アプリケーション

Our [Abpromise guarantee](#) covers the use of **ab28521** in the following tested applications.

The application notes include recommended starting dilutions; optimal dilutions/concentrations should be determined by the end user.

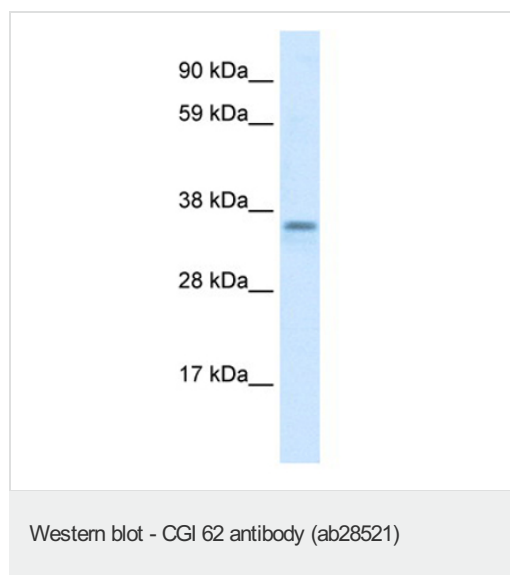
| アプリケーション | Abreviews | 特記事項 |
|----------|-----------|---|
| WB | | Use a concentration of 1.25 µg/ml. Predicted molecular weight: 35 kDa. Good results were obtained when blocked with 5% non-fat dry milk in 0.05% PBS-T. |
| ELISA | | 1/1.5625e+006. |
| IHC-P | | Use at an assay dependent concentration. |

ターゲット情報

配列類似性

Belongs to the UPF0418 family.

画像

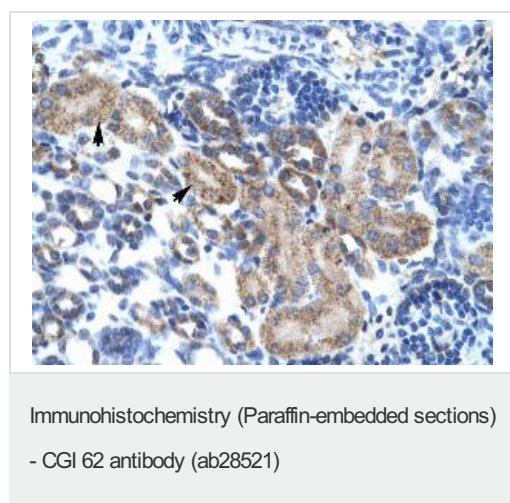


Anti-CGI 62 antibody (ab28521) at 1.25 µg/ml
+ Fetal Brain Lysate

Secondary

Rabbit Anti-CGI-62 Antibody at 1/50000
dilution

Predicted band size: 35 kDa



Ab28521, at 4.0-8.0ug/ml, staining CGI 62 in
paraffin embedded human epithelial cells of
renal tubule by Immunohistochemistry.

Please note: All products are "FOR RESEARCH USE ONLY AND ARE NOT INTENDED FOR DIAGNOSTIC OR THERAPEUTIC USE"

Our Abpromise to you: Quality guaranteed and expert technical support

- Replacement or refund for products not performing as stated on the datasheet
- Valid for 12 months from date of delivery
- Response to your inquiry within 24 hours

- We provide support in Chinese, English, French, German, Japanese and Spanish
- Extensive multi-media technical resources to help you
- We investigate all quality concerns to ensure our products perform to the highest standards

If the product does not perform as described on this datasheet, we will offer a refund or replacement. For full details of the Abpromise, please visit <https://www.abcam.co.jp/abpromise> or contact our technical team.

Terms and conditions

- Guarantee only valid for products bought direct from Abcam or one of our authorized distributors