


Product datasheet

Anti-D Box Binding Protein antibody ab26157

画像数 2

製品の概要

製品名	Anti-D Box Binding Protein antibody
製品の詳細	Rabbit polyclonal to D Box Binding Protein
由来種	Rabbit
アプリケーション	適用あり: WB, IHC-P
種交差性	交差種: Human 交差が予測される動物種: Mouse, Rat, Sheep, Cow, Dog 
免疫原	Synthetic peptide derived from a region between residues 159 - 208 of human D Box Binding Protein. Immunogen の所有権に関して.
ポジティブ・コントロール	HepG2 cell lysate

製品の特性

製品の状態	Liquid
保存方法	Shipped at 4°C. Upon delivery aliquot and store at -20°C or -80°C. Avoid repeated freeze / thaw cycles.
バッファー	Preservative: 0.09% Sodium azide Constituents: 2% Sucrose, PBS
精製度	Immunogen affinity purified
ポリ/モノ	ポリクローナル
アイソタイプ	IgG

アプリケーション

Our [Abpromise guarantee](#) covers the use of **ab26157** in the following tested applications.

The application notes include recommended starting dilutions; optimal dilutions/concentrations should be determined by the end user.

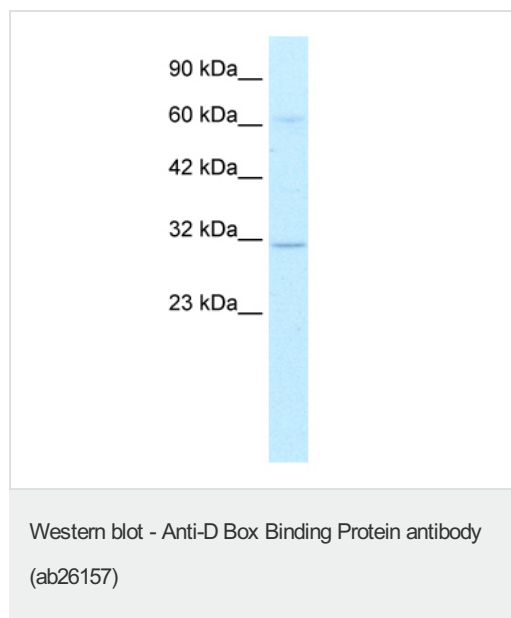
アプリケーション	Abreviews	特記事項

アプリ ケーション	Abreviews	特記事項
WB		Use a concentration of 1 µg/ml. Detects a band of approximately 32 kDa (predicted molecular weight: 34 kDa). Good results were obtained when blocked with 5% non-fat dry milk in 0.05% PBS-T.
IHC-P		Use at an assay dependent concentration.

## ターゲット情報

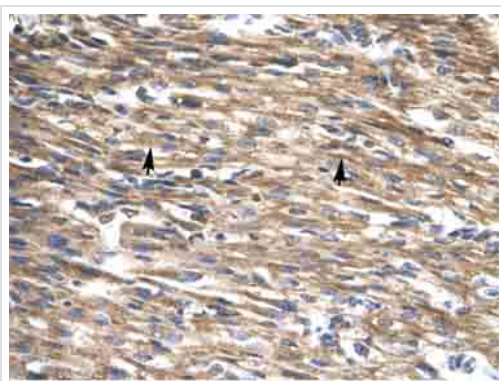
機能	This transcriptional activator recognizes and binds to the sequence 5'-RTTAYGTAAAY-3' found in the promoter of genes such as albumin, CYP2A4 and CYP2A5. It is not essential for circadian rhythm generation, but modulates important clock output genes. May be a direct target for regulation by the circadian pacemaker component clock. May affect circadian period and sleep regulation.
組織特異性	Ubiquitously expressed. Expressed in the suprachiasmatic nuclei (SCN) and in most peripheral tissues, with a strong circadian rhythmicity.
配列類似性	Belongs to the bZIP family. PAR subfamily. Contains 1 bZIP domain.
細胞内局在	Nucleus.

## 画像



Anti-D Box Binding Protein antibody (ab26157) at 1 µg/ml + HepG2 cell lysate

**Predicted band size:** 34 kDa



Staining of human heart tissue with ab26157 (4-8 ug/ml). Positive labelled myocardial cells are indicated with arrows. 400X magnification.

Immunohistochemistry (Formalin/PFA-fixed paraffin-embedded sections) - Anti-D Box Binding Protein antibody (ab26157)

**Please note:** All products are "FOR RESEARCH USE ONLY AND ARE NOT INTENDED FOR DIAGNOSTIC OR THERAPEUTIC USE"

### Our Abpromise to you: Quality guaranteed and expert technical support

---

- Replacement or refund for products not performing as stated on the datasheet
- Valid for 12 months from date of delivery
- Response to your inquiry within 24 hours
- We provide support in Chinese, English, French, German, Japanese and Spanish
- Extensive multi-media technical resources to help you
- We investigate all quality concerns to ensure our products perform to the highest standards

If the product does not perform as described on this datasheet, we will offer a refund or replacement. For full details of the Abpromise, please visit <https://www.abcam.co.jp/abpromise> or contact our technical team.

### Terms and conditions

---

- Guarantee only valid for products bought direct from Abcam or one of our authorized distributors