

## Product datasheet

# Anti-NUCB1 antibody ab26093

★★★★☆ 1 Abreviews [画像数 1](#)

### 製品の概要

製品名	Anti-NUCB1 antibody
製品の詳細	Rabbit polyclonal to NUCB1
由来種	Rabbit
アプリケーション	<b>適用あり:</b> ELISA, WB
種交差性	<b>交差種:</b> Human
免疫原	Synthetic peptide derived from a region between residues 411-461 of human Nucleobindin 1. Immunogen の所有権に関して.
ポジティブ・コントロール	HepG2 cell lysate for Western blot.

### 製品の特性

製品の状態	Liquid
保存方法	Shipped at 4°C. Store at +4°C short term (1-2 weeks). Upon delivery aliquot. Store at -20°C long term.
バッファー	Preservative: 0.09% Sodium azide Constituents: 2% Sucrose, PBS
精製度	Immunogen affinity purified
ポリ/モノ	ポリクローナル
アイソタイプ	IgG

### アプリケーション

Our [Abpromise guarantee](#) covers the use of **ab26093** in the following tested applications.

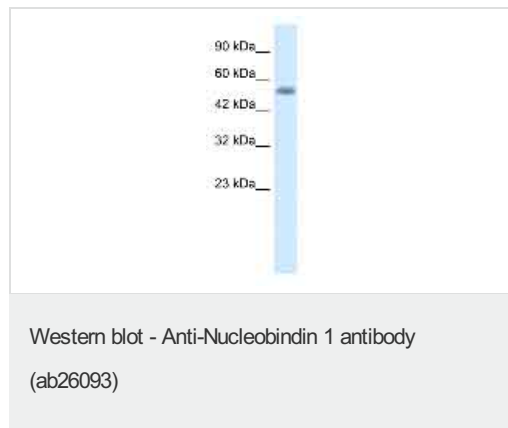
The application notes include recommended starting dilutions; optimal dilutions/concentrations should be determined by the end user.

アプリケーション	Abreviews	特記事項
ELISA		1/1.5625e+006.
WB	★★★★☆	Use a concentration of 1 µg/ml. Predicted molecular weight: 54 kDa. Good results were obtained when blocked with 5% non-fat dry milk in 0.05% PBS-T.

## ターゲット情報

機能	Major calcium-binding protein of the Golgi. May have a role in calcium homeostasis.
組織特異性	Expressed both in fetal and adult heart, lung, liver, kidney and brain, and in adult skeletal muscle, placenta and pancreas.
配列類似性	Belongs to the nucleobindin family. Contains 2 EF-hand domains.
ドメイン	The EF-hand domains are unfolded in the absence of Ca(2+) and fold upon Ca(2+) addition.
翻訳後修飾	Phosphorylated upon DNA damage, probably by ATM or ATR.
細胞内局在	Golgi apparatus > cis-Golgi network membrane. Cytoplasm. A small fraction of the protein may be cytoplasmic.

## 画像



Anti-NUCB1 antibody (ab26093) at 1 µg/ml + HepG2 cell lysate 10ug.

**Predicted band size:** 54 kDa

**Please note:** All products are "FOR RESEARCH USE ONLY AND ARE NOT INTENDED FOR DIAGNOSTIC OR THERAPEUTIC USE"

## Our Abpromise to you: Quality guaranteed and expert technical support

- Replacement or refund for products not performing as stated on the datasheet
- Valid for 12 months from date of delivery
- Response to your inquiry within 24 hours
- We provide support in Chinese, English, French, German, Japanese and Spanish
- Extensive multi-media technical resources to help you
- We investigate all quality concerns to ensure our products perform to the highest standards

If the product does not perform as described on this datasheet, we will offer a refund or replacement. For full details of the Abpromise, please visit <https://www.abcam.co.jp/abpromise> or contact our technical team.

## Terms and conditions

- Guarantee only valid for products bought direct from Abcam or one of our authorized distributors