

Product datasheet

Anti-MHC Class 1 H2 Db antibody [28-14-8] (Phycoerythrin)  
ab25588

画像数 1

製品の概要

|          |   |
|----------|---|
| 製品名      | Anti-MHC Class 1 H2 Db antibody [28-14-8] (Phycoerythrin)   |
| 製品の詳細    | Mouse monoclonal [28-14-8] to MHC Class 1 H2 Db (Phycoerythrin)   |
| 由来種      | Mouse   |
| 標識       | Phycoerythrin. Ex: 488nm, Em: 575nm   |
| 特異性      | This antibody binds to the $\alpha 3$ domain of H-2Db in the presence or absence of $\beta 2$ microglobulin. It cross reacts with the $\alpha 3$ domain of H-2Ld, but not Kd or Dd, and with H-2Dq and/or Lq.   |
| アプリケーション | <b>適用あり:</b> Flow Cyt, IHC-Fr   |
| 種交差性     | <b>交差種:</b> Mouse   |
| 免疫原      | C3H.SW mouse splenocytes.   |
| エピトープ    | This antibody recognises an epitope in the $\alpha 3$ domain of H-2Db.  |
| 特記事項     | This antibody has been shown to block H-2Ld-specific and H-2Ld-restricted antigen-specific lysis of target cells by cytotoxic T lymphocytes, but it does not block recognition of H-2Ld-positive target cells by Ly-6G2-positive NK cells. It has been shown to be useful in studies of complement mediated cytotoxicity. |

製品の特性

|         |   |
|---------|---|
| 製品の状態   | Liquid  |
| 保存方法    | Shipped at 4°C. Store at +4°C.  |
| バッファー   | Preservative: 0.09% Sodium azide<br>Constituents: PBS, 16% Sucrose<br><br>Also contains a stabilizing agent.  |
| 精製度     | IgG fraction  |
| 一次抗体 備考 | This antibody has been shown to block H-2Ld-specific and H-2Ld-restricted antigen-specific lysis of target cells by cytotoxic T lymphocytes, but it does not block recognition of H-2Ld-positive target cells by Ly-6G2-positive NK cells. It has been shown to be useful in studies of complement mediated cytotoxicity. |
| ポリ/モノ   | モノクローナル   |

|        |         |
|--------|---------|
| クローン名  | 28-14-8 |
| アイソタイプ | IgG2a   |
| 軽鎖の種類  | kappa   |

## アプリケーション

Our [Abpromise guarantee](#) covers the use of **ab25588** in the following tested applications.

The application notes include recommended starting dilutions; optimal dilutions/concentrations should be determined by the end user.

| アプリケーション | Abreviews | 特記事項                                |
|----------|-----------|-------------------------------------|
| Flow Cyt |           | Use at an assay dependent dilution. |
| IHC-Fr   |           | Use at an assay dependent dilution. |

## ターゲット情報

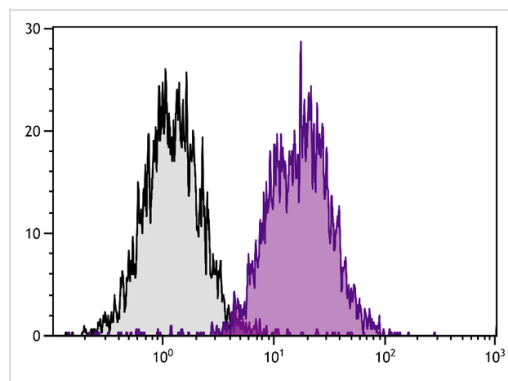
**関連性**

In the mouse the MHC Class 1 loci are called H2K, H2L and H2D. The equivalent loci in the human MHC are HLA (Human Leukocyte Antigen). MHC class I molecules are heterodimers, consisting of a single transmembrane polypeptide chain (the  $\alpha$ -chain) which is highly polymorphic, and the invariant  $\beta_2$  microglobulin (which is encoded elsewhere, not in the MHC). MHC class I molecules are found on almost every nucleated cell of the body. Their major function is to present peptide fragments derived from antigens to cytotoxic T cells.

**細胞内局在**

Cell Membrane; single pass type I membrane protein

## 画像



Flow cytometry analysis staining MHC Class 1 H2 Db in mouse splenocytes using ab25588 at a dilution of 0.1  $\mu\text{g}/10^6$  cells. Mouse IgG2a-PE was used as an isotype control.

Flow Cytometry - Anti-MHC Class 1 H2 Db antibody  
[28-14-8] (Phycoerythrin) (ab25588)

**Please note:** All products are "FOR RESEARCH USE ONLY AND ARE NOT INTENDED FOR DIAGNOSTIC OR THERAPEUTIC USE"

**Our Abpromise to you: Quality guaranteed and expert technical support**

- Replacement or refund for products not performing as stated on the datasheet
- Valid for 12 months from date of delivery
- Response to your inquiry within 24 hours
  
- We provide support in Chinese, English, French, German, Japanese and Spanish
- Extensive multi-media technical resources to help you
- We investigate all quality concerns to ensure our products perform to the highest standards

If the product does not perform as described on this datasheet, we will offer a refund or replacement. For full details of the Abpromise, please visit <https://www.abcam.co.jp/abpromise> or contact our technical team.

## **Terms and conditions**

---

- Guarantee only valid for products bought direct from Abcam or one of our authorized distributors