

Product datasheet

Anti-EEF1D antibody ab13962

1 References [画像数 1](#)

製品の概要

製品名	Anti-EEF1D antibody
製品の詳細	Rabbit polyclonal to EEF1D
由来種	Rabbit
種交差性	交差種: Human
免疫原	Recombinant EEF1D protein fragment expressed in <i>E. coli</i>

製品の特性

製品の状態	Liquid
保存方法	Shipped at 4°C. Store at +4°C short term (1-2 weeks). Upon delivery aliquot. Store at -20°C or -80°C. Avoid freeze / thaw cycle.
バッファー	Preservative: 0.02% Sodium Azide Constituents: 50% Glycerol, PBS
精製度	Protein A purified
特記事項(精製)	Protein A affinity chromatography.
ポリモノ	ポリクローナル
アイソタイプ	IgG

アプリケーション

追加情報	WB: 1/1000. This antibody was tested against the recombinant fragment used as immunogen. We have no data on the detection of endogenous protein.  Not yet tested in other applications. Optimal dilutions/concentrations should be determined by the end user.
------	---

ターゲット情報

機能	Isoform 1: EF-1-beta and EF-1-delta stimulate the exchange of GDP bound to EF-1-alpha to GTP, regenerating EF-1-alpha for another round of transfer of aminoacyl-tRNAs to the ribosome. Isoform 2: Regulates induction of heat-shock-responsive genes through association with heat
----	--

shock transcription factors and direct DNA-binding at heat shock promoter elements (HSE).

**組織特異性**

Isoform 2 is specifically expressed in brain, cerebellum and testis.

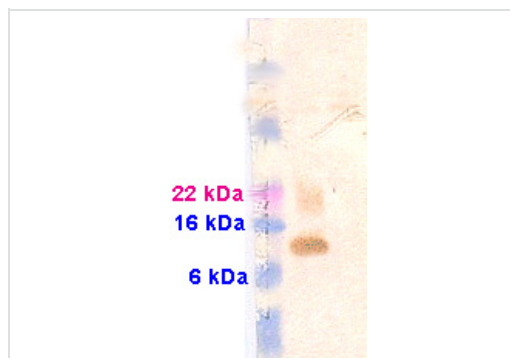
**配列類似性**

Belongs to the EF-1-beta/EF-1-delta family.

**細胞内局在**

Nucleus.

**画像**



Western blot - Anti-EEF1D antibody (ab13962)

**All lanes** : Anti-EEF1D antibody (ab13962) at 1/1000 dilution

**Lane 1** : EEF1D protein fragment (immunogen)

**Lane 2** : Negative control: construct made using same fusion tag but different protein

Western Blot developed in membrane using a DAB staining kit.

**Please note:** All products are "FOR RESEARCH USE ONLY AND ARE NOT INTENDED FOR DIAGNOSTIC OR THERAPEUTIC USE"

**Our Abpromise to you: Quality guaranteed and expert technical support**

- Replacement or refund for products not performing as stated on the datasheet
- Valid for 12 months from date of delivery
- Response to your inquiry within 24 hours
- We provide support in Chinese, English, French, German, Japanese and Spanish
- Extensive multi-media technical resources to help you
- We investigate all quality concerns to ensure our products perform to the highest standards

If the product does not perform as described on this datasheet, we will offer a refund or replacement. For full details of the Abpromise, please visit <https://www.abcam.co.jp/abpromise> or contact our technical team.

**Terms and conditions**

- Guarantee only valid for products bought direct from Abcam or one of our authorized distributors