

Product datasheet

Anti-IZUMO4 antibody ab125378

画像数 1

製品の概要

| | |
|--------------|---------------------------------------------------------------------------------------------------------------------------------------------------------------------------------------------------------------------------------------------------|
| 製品名 | Anti-IZUMO4 antibody |
| 製品の詳細 | Rabbit polyclonal to IZUMO4 |
| 由来種 | Rabbit |
| アプリケーション | 適用あり: WB |
| 種交差性 | 交差種: Human 交差が予測される動物種: Horse, Cow, Cat, Dog, Pig |
| 免疫原 | Synthetic peptide corresponding to a region within C terminal amino acids 183-232 (SMRPRSSAFSWPGTHRATPAFLVSPALRCLEPPHLANLTLEDAAECLKQH) of Human IZUMO4; isoform 1 (NP_001034935) Run BLAST with Run BLAST with |
| ポジティブ・コントロール | HepG2 cell lysate |

製品の特性

| | |
|--------|------------------------------------------------------------------------------------------------|
| 製品の状態 | Liquid |
| 保存方法 | Shipped at 4°C. Upon delivery aliquot and store at -20°C. Avoid repeated freeze / thaw cycles. |
| バッファー | Constituents: 98% PBS, 2% Sucrose |
| 精製度 | Immunogen affinity purified |
| ポリ/モノ | ポリクローナル |
| アイソタイプ | IgG |

アプリケーション

Our [Abpromise guarantee](#) covers the use of **ab125378** in the following tested applications.

The application notes include recommended starting dilutions; optimal dilutions/concentrations should be determined by the end user.

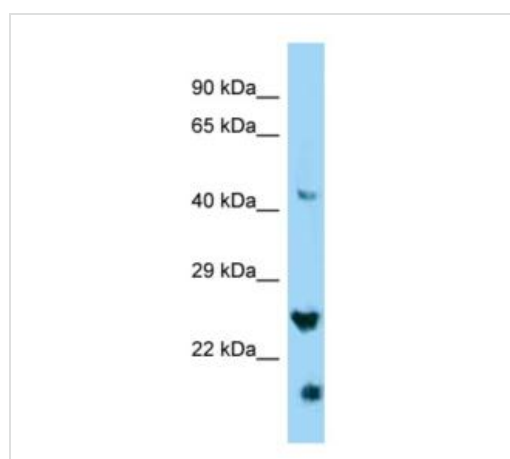
| アプリケーション | Abreviews | 特記事項 |
|----------|-----------|------|
|----------|-----------|------|

| アプリケーション | Abreviews | 特記事項 |
|----------|-----------|------------------------------------------------------------------------------------------------------------------------------------------------------|
| WB | | Use a concentration of 1 µg/ml. Predicted molecular weight: 27 kDa. Good results were obtained when blocked with 5% non-fat dry milk in 0.05% PBS-T. |

ターゲット情報

| | |
|-------|------------------------------|
| 組織特異性 | Detected in sperm. |
| 配列類似性 | Belongs to the Izumo family. |
| 細胞内局在 | Secreted. |

画像



Western blot - Anti-IZUMO4 antibody (ab125378)

Anti-IZUMO4 antibody (ab125378) at 1 µg/ml
+ HepG2 cell lysate at 10 µg with milk at 5 %

Predicted band size: 27 kDa

Observed band size: 26 kDa

Gel concentration: 12%

Please note: All products are "FOR RESEARCH USE ONLY AND ARE NOT INTENDED FOR DIAGNOSTIC OR THERAPEUTIC USE"

Our Abpromise to you: Quality guaranteed and expert technical support

- Replacement or refund for products not performing as stated on the datasheet
- Valid for 12 months from date of delivery
- Response to your inquiry within 24 hours
- We provide support in Chinese, English, French, German, Japanese and Spanish
- Extensive multi-media technical resources to help you
- We investigate all quality concerns to ensure our products perform to the highest standards

If the product does not perform as described on this datasheet, we will offer a refund or replacement. For full details of the Abpromise, please visit <https://www.abcam.co.jp/abpromise> or contact our technical team.

Terms and conditions

- Guarantee only valid for products bought direct from Abcam or one of our authorized distributors