

Product datasheet

Anti-CDKL4 antibody ab124247

画像数 1

製品の概要

|              |  |
|--------------|--|
| 製品名          | Anti-CDKL4 antibody  |
| 製品の詳細        | Rabbit polyclonal to CDKL4   |
| 由来種          | Rabbit   |
| アプリケーション     | 適用あり: WB   |
| 種交差性         | 交差種: Mouse   |
| 免疫原          | Synthetic peptide conjugated to KLH, corresponding to a region between C terminal amino acids 271-299 of Mouse CDKL4 (NP_001028615.1). |
| ポジティブ・コントロール | Mouse kidney tissue lysates  |

製品の特性

|           |   |
|-----------|---|
| 製品の状態     | Liquid  |
| 保存方法      | Shipped at 4°C. Store at 4°C (up to 6 months). Store at -20°C long term.        |
| バッファー     | Preservative: 0.09% Sodium azide<br>Constituent: 99% PBS                        |
| 精製度       | Immunogen affinity purified   |
| 特記事項 (精製) | Purified through a protein A column, followed by peptide affinity purification. |
| ポリ/モノ     | ポリクローナル   |
| アイソタイプ    | IgG   |

アプリケーション

Our [Abpromise guarantee](#) covers the use of **ab124247** in the following tested applications.

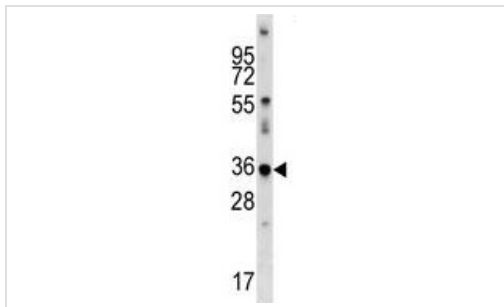
The application notes include recommended starting dilutions; optimal dilutions/concentrations should be determined by the end user.

| アプリケーション | Abreviews | 特記事項   |
|----------|-----------|--|
| WB       |           | 1/100 - 1/500. Predicted molecular weight: 39 kDa. |

ターゲット情報

|       |   |
|-------|---|
| 配列類似性 | Belongs to the protein kinase superfamily. CMGC Ser/Thr protein kinase family. CDC2/CDKX subfamily. |
|       | Contains 1 protein kinase domain.   |
| ドメイン  | The [NKR]KIAxRE motif seems to be a cyclin-binding region.  |
| 細胞内局在 | Cytoplasm.  |

## 画像



Western blot - Anti-CDKL4 antibody (ab124247)

Anti-CDKL4 antibody (ab124247) at 1/100 dilution + Mouse kidney tissue lysates at 35 µg

**Predicted band size:** 39 kDa

**Please note:** All products are "FOR RESEARCH USE ONLY AND ARE NOT INTENDED FOR DIAGNOSTIC OR THERAPEUTIC USE"

## Our Abpromise to you: Quality guaranteed and expert technical support

- Replacement or refund for products not performing as stated on the datasheet
- Valid for 12 months from date of delivery
- Response to your inquiry within 24 hours
- We provide support in Chinese, English, French, German, Japanese and Spanish
- Extensive multi-media technical resources to help you
- We investigate all quality concerns to ensure our products perform to the highest standards

If the product does not perform as described on this datasheet, we will offer a refund or replacement. For full details of the Abpromise, please visit <https://www.abcam.co.jp/abpromise> or contact our technical team.

## Terms and conditions

- Guarantee only valid for products bought direct from Abcam or one of our authorized distributors