

## Product datasheet

# Anti-Natriuretic Peptide Receptor C antibody [OT11H6] ab123957

画像数 8

### 製品の概要

製品名	Anti-Natriuretic Peptide Receptor C antibody [OT11H6]
製品の詳細	Mouse monoclonal [OT11H6] to Natriuretic Peptide Receptor C
由来種	Mouse
アプリケーション	<b>適用あり:</b> WB, IHC-P, Flow Cyt, ICC/IF
種交差性	<b>交差種:</b> Human
免疫原	Recombinant full length Human Natriuretic Peptide Receptor C protein produced in HEK293T cells (NP_000899).
ポジティブ・コントロール	HEK293T cells transfected with pCMV6-ENTRY Natriuretic Peptide Receptor C cDNA; Human kidney, liver and liver carcinoma tissues; COS7 cells transiently transfected by pCMV6-ENTRY Natriuretic Peptide Receptor C; HeLa and HT29 cells; HEK293T cells transfected with pCMV6-ENTRY Natriuretic Peptide Receptor C.
特記事項	Dilute in PBS (pH7.3) before use.

### 製品の特性

製品の状態	Liquid
保存方法	Shipped at 4°C. Upon delivery aliquot and store at -20°C. Avoid repeated freeze / thaw cycles.
バッファー	pH: 7.30 Preservative: 0.02% Sodium azide Constituents: 48% PBS, 50% Glycerol, 1% BSA
精製度	Protein A purified
特記事項(精製)	ab123957 is purified from Mouse ascites fluid by affinity chromatography.
ポリクローナル	モノクローナル
クローン名	OT11H6
アイソタイプ	IgG2b

### アプリケーション

Our [Abpromise guarantee](#) covers the use of **ab123957** in the following tested applications.

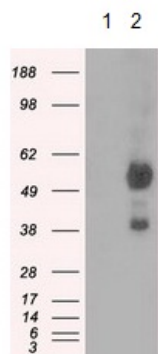
The application notes include recommended starting dilutions; optimal dilutions/concentrations should be determined by the end user.

アプリケーション	Abreviews	特記事項
WB		1/2000. Predicted molecular weight: 60 kDa.
IHC-P		1/50.
Flow Cyt		1/100. <a href="#">ab170192</a> - Mouse monoclonal IgG2b, is suitable for use as an isotype control with this antibody.
ICC/IF		1/100.

### ターゲット情報

機能	Receptor for the natriuretic peptide hormones, binding with similar affinities atrial natriuretic peptide NPPA/ANP, brain natriuretic peptide NPPB/BNP, and C-type natriuretic peptide NPPC/CNP. May function as a clearance receptor for NPPA, NPPB and NPPC, regulating their local concentrations and effects. May regulate diuresis, blood pressure and skeletal development. Does not have guanylate cyclase activity.
配列類似性	Belongs to the ANF receptor family.
細胞内局在	Membrane.

### 画像



Western blot - Anti-Natriuretic Peptide Receptor C antibody [OT111H6] (ab123957)

**All lanes** : Anti-Natriuretic Peptide Receptor C antibody [OT111H6] (ab123957) at 1/2000 dilution

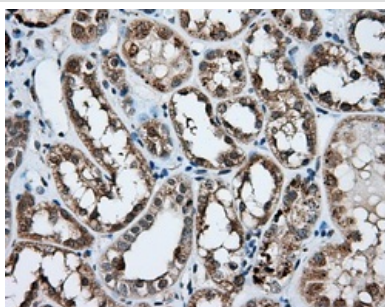
**Lane 1** : HEK293T cells transfected with pCMV6-ENTRY control cDNA

**Lane 2** : HEK293T cells transfected with pCMV6-ENTRY Natriuretic Peptide Receptor C cDNA

Lysates/proteins at 5 µg per lane.

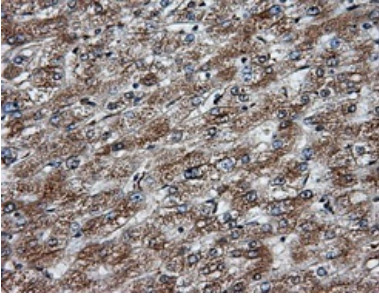
**Predicted band size:** 60 kDa

HEK293T cell lysates were generated from transient transfection of the cDNA clone (RC219453)



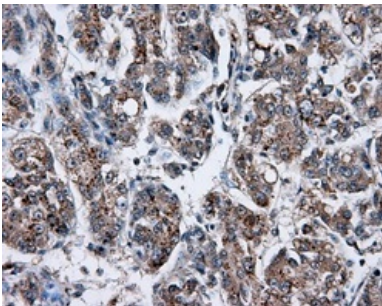
Immunohistochemistry (Formalin/PFA-fixed paraffin-embedded sections) - Anti-Natriuretic Peptide Receptor C antibody [OT111H6] (ab123957)

ab123957, at 1/50 dilution, staining Natriuretic Peptide Receptor C in paraffin-embedded Human kidney tissue by Immunohistochemistry.



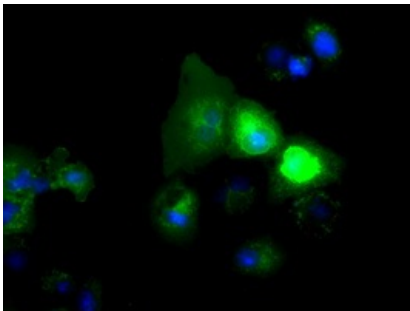
ab123957, at 1/50 dilution, staining Natriuretic Peptide Receptor C in paraffin-embedded Human liver tissue by Immunohistochemistry.

Immunohistochemistry (Formalin/PFA-fixed paraffin-embedded sections) - Anti-Natriuretic Peptide Receptor C antibody [OT111H6] (ab123957)



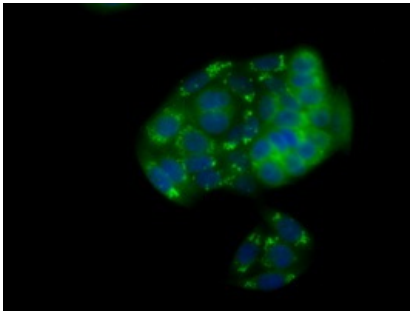
ab123957, at 1/50 dilution, staining Natriuretic Peptide Receptor C in paraffin-embedded Human liver carcinoma tissue by Immunohistochemistry.

Immunohistochemistry (Formalin/PFA-fixed paraffin-embedded sections) - Anti-Natriuretic Peptide Receptor C antibody [OT111H6] (ab123957)



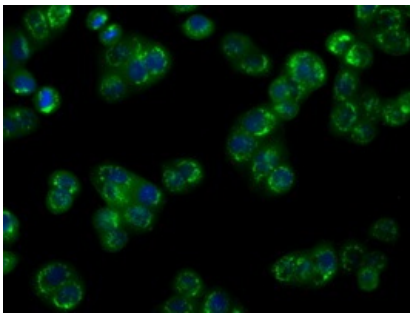
ab123957, at 1/100 dilution, staining Natriuretic Peptide Receptor C in COS7 cells transiently transfected by pCMV6-ENTRY Natriuretic Peptide Receptor C by Immunofluorescence.

Immunocytochemistry/ Immunofluorescence - Anti-Natriuretic Peptide Receptor C antibody [OT111H6] (ab123957)



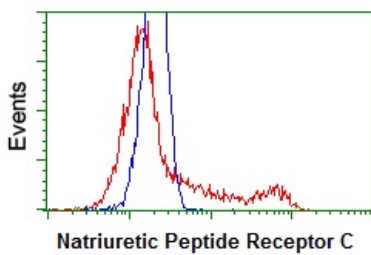
ab123957, at 1/100 dilution, staining Natriuretic Peptide Receptor C in HeLa cells by Immunofluorescence.

Immunocytochemistry/ Immunofluorescence - Anti-Natriuretic Peptide Receptor C antibody [OT11H6] (ab123957)



ab123957, at 1/100 dilution, staining Natriuretic Peptide Receptor C in HT29 cells by Immunofluorescence.

Immunocytochemistry/ Immunofluorescence - Anti-Natriuretic Peptide Receptor C antibody [OT11H6] (ab123957)



ab123957 at 1/100 dilution staining Natriuretic Peptide Receptor C in HEK293T cells transfected with either pCMV6-ENTRY Natriuretic Peptide Receptor C (Red) or empty vector control plasmid (Blue) by Flow Cytometry.

Flow Cytometry - Anti-Natriuretic Peptide Receptor C antibody [OT11H6] (ab123957)

**Please note:** All products are "FOR RESEARCH USE ONLY AND ARE NOT INTENDED FOR DIAGNOSTIC OR THERAPEUTIC USE"

### Our Abpromise to you: Quality guaranteed and expert technical support

- Replacement or refund for products not performing as stated on the datasheet
- Valid for 12 months from date of delivery
- Response to your inquiry within 24 hours

- We provide support in Chinese, English, French, German, Japanese and Spanish
- Extensive multi-media technical resources to help you
- We investigate all quality concerns to ensure our products perform to the highest standards

If the product does not perform as described on this datasheet, we will offer a refund or replacement. For full details of the Abpromise, please visit <https://www.abcam.co.jp/abpromise> or contact our technical team.

### **Terms and conditions**

---

- Guarantee only valid for products bought direct from Abcam or one of our authorized distributors