

## Product datasheet

# Anti-SWAN antibody ab123565

### 画像数 2

#### 製品の概要

製品名	Anti-SWAN antibody
製品の詳細	Rabbit polyclonal to SWAN
由来種	Rabbit
アプリケーション	<b>適用あり:</b> WB
種交差性	<b>交差種:</b> Mouse, Human
免疫原	Synthetic peptide conjugated to KLH, corresponding to internal sequence amino acids 574-603 of Human RBM12 (NP_690051.1, NP_006038.2).
ポジティブ・コントロール	NCI-H460 cell line lysates or Mouse spleen tissue lysates.

#### 製品の特性

製品の状態	Liquid
保存方法	Shipped at 4°C. Store at 4°C (up to 6 months). Store at -20°C long term.
バッファー	Preservative: 0.09% Sodium azide Constituent: 99% PBS
精製度	Immunogen affinity purified
特記事項 (精製)	This antibody is purified through a protein A column, followed by peptide affinity purification.
ポリ/モノ	ポリクローナル
アイソタイプ	IgG

#### アプリケーション

Our [Abpromise guarantee](#) covers the use of **ab123565** in the following tested applications.

The application notes include recommended starting dilutions; optimal dilutions/concentrations should be determined by the end user.

アプリケーション	Abreviews	特記事項
WB		1/100 - 1/500. Predicted molecular weight: 97 kDa.

#### ターゲット情報

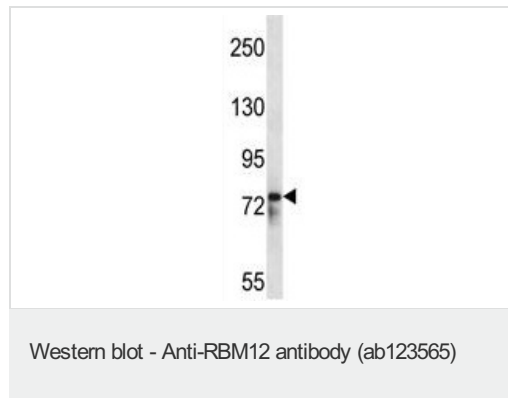
配列類似性

Contains 3 RRM (RNA recognition motif) domains.

細胞内局在

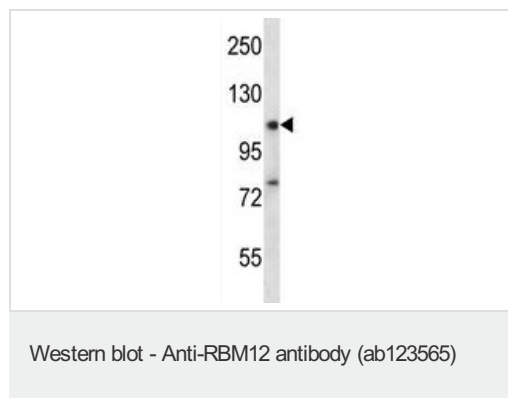
Nucleus.

## 画像



Anti-SWAN antibody (ab123565) at 1/100 dilution + NCI-H460 cell line lysates at 35  $\mu$ g

**Predicted band size:** 97 kDa



Anti-SWAN antibody (ab123565) at 1/100 dilution + Mouse spleen tissue lysates at 35  $\mu$ g

**Predicted band size:** 97 kDa

**Please note:** All products are "FOR RESEARCH USE ONLY AND ARE NOT INTENDED FOR DIAGNOSTIC OR THERAPEUTIC USE"

## Our Abpromise to you: Quality guaranteed and expert technical support

- Replacement or refund for products not performing as stated on the datasheet
- Valid for 12 months from date of delivery
- Response to your inquiry within 24 hours
- We provide support in Chinese, English, French, German, Japanese and Spanish
- Extensive multi-media technical resources to help you
- We investigate all quality concerns to ensure our products perform to the highest standards

If the product does not perform as described on this datasheet, we will offer a refund or replacement. For full details of the Abpromise, please visit <https://www.abcam.co.jp/abpromise> or contact our technical team.

## Terms and conditions

- Guarantee only valid for products bought direct from Abcam or one of our authorized distributors