

Product datasheet

Anti-Galectin 10 antibody ab123426

画像数 1

製品の概要

製品名	Anti-Galectin 10 antibody
製品の詳細	Rabbit polyclonal to Galectin 10
由来種	Rabbit
アプリケーション	適用あり: WB
種交差性	交差種: Human
免疫原	Synthetic peptide conjugated to KLH, corresponding to a region within C-terminal amino acids 94-124 of Human Galectin 10 (NP_001819.2).
ポジティブ・コントロール	293 cell lysate transiently transfected with Human Galectin 10.

製品の特性

製品の状態	Liquid
保存方法	Shipped at 4°C. Store at 4°C (up to 6 months). Store at -20°C long term.
バッファー	Preservative: 0.09% Sodium azide Constituent: 99% PBS
精製度	Immunogen affinity purified
特記事項(精製)	ab123426 is purified through a Protein A column, followed by peptide affinity purification.
ポリ/モノ	ポリクローナル
アイソタイプ	IgG

アプリケーション

Our [Abpromise guarantee](#) covers the use of **ab123426** in the following tested applications.

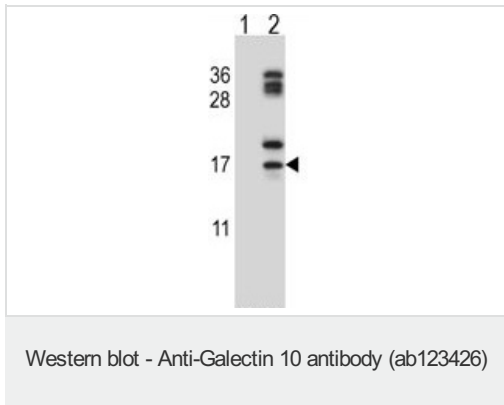
The application notes include recommended starting dilutions; optimal dilutions/concentrations should be determined by the end user.

アプリケーション	Abreviews	特記事項
WB		1/100 - 1/500. Predicted molecular weight: 16 kDa.

ターゲット情報

機能	May have both lysophospholipase and carbohydrate-binding activities.
組織特異性	Expressed exclusively by eosinophils and basophils. Not detected in monocytes and neutrophils.
配列類似性	Contains 1 galectin domain.
細胞内局在	Cytoplasmic granule. Localized in granules from where it may be secreted or transported to other locations in the cell.

画像



All lanes : Anti-Galectin 10 antibody (ab123426) at 1/100 dilution

Lane 1 : 293 cell lysate, non-transfected

Lane 2 : 293 cell lysate, transiently transfected with Human Galectin 10 gene

Lysates/proteins at 2 µg per lane.

Predicted band size: 16 kDa

Please note: All products are "FOR RESEARCH USE ONLY AND ARE NOT INTENDED FOR DIAGNOSTIC OR THERAPEUTIC USE"

Our Abpromise to you: Quality guaranteed and expert technical support

- Replacement or refund for products not performing as stated on the datasheet
- Valid for 12 months from date of delivery
- Response to your inquiry within 24 hours
- We provide support in Chinese, English, French, German, Japanese and Spanish
- Extensive multi-media technical resources to help you
- We investigate all quality concerns to ensure our products perform to the highest standards

If the product does not perform as described on this datasheet, we will offer a refund or replacement. For full details of the Abpromise, please visit <https://www.abcam.co.jp/abpromise> or contact our technical team.

Terms and conditions

- Guarantee only valid for products bought direct from Abcam or one of our authorized distributors