

Product datasheet

Anti-gamma Adducin antibody ab123316

画像数 1

製品の概要

製品名	Anti-gamma Adducin antibody
製品の詳細	Rabbit polyclonal to gamma Adducin
由来種	Rabbit
アプリケーション	適用あり: WB
種交差性	交差種: Human
免疫原	Synthetic peptide conjugated to KLH, corresponding to a region within C terminal amino acids 551-580 of Human gamma Adducin (NP_001112.2, NP_063968.1).
ポジティブ・コントロール	NCI-H292 cell line lysate.

製品の特性

製品の状態	Liquid
保存方法	Shipped at 4°C. Store at 4°C (up to 6 months). Store at -20°C long term.
バッファー	Preservative: 0.09% Sodium azide Constituent: 99% PBS
精製度	Immunogen affinity purified
特記事項(精製)	Purified through a protein A column, followed by peptide affinity purification.
ポリ/モノ	ポリクローナル
アイソタイプ	IgG

アプリケーション

Our [Abpromise guarantee](#) covers the use of **ab123316** in the following tested applications.

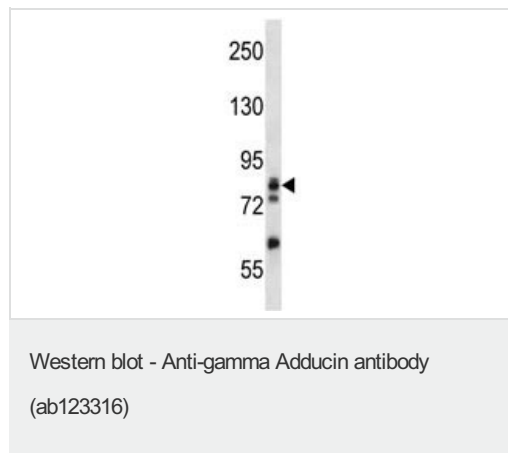
The application notes include recommended starting dilutions; optimal dilutions/concentrations should be determined by the end user.

アプリケーション	Abreviews	特記事項
WB		1/100 - 1/500. Predicted molecular weight: 79 kDa.

ターゲット情報

機能	Membrane-cytoskeleton-associated protein that promotes the assembly of the spectrin-actin network. Binds to calmodulin.
組織特異性	Heart only expresses isoform 1.
配列類似性	Belongs to the aldolase class II family. Adducin subfamily.
ドメイン	Comprised of three regions: a N-terminal protease-resistant globular head region, a short connecting subdomain, and a protease-sensitive tail region.
翻訳後修飾	Sumoylated.
細胞内局在	Cytoplasm > cytoskeleton. Cell membrane.

## 画像



Anti-gamma Adducin antibody (ab123316) at 1/100 dilution + NCI-H292 cell line lysate at 35 µg

Developed using the ECL technique.

**Predicted band size:** 79 kDa

**Please note:** All products are "FOR RESEARCH USE ONLY AND ARE NOT INTENDED FOR DIAGNOSTIC OR THERAPEUTIC USE"

## Our Abpromise to you: Quality guaranteed and expert technical support

- Replacement or refund for products not performing as stated on the datasheet
- Valid for 12 months from date of delivery
- Response to your inquiry within 24 hours
- We provide support in Chinese, English, French, German, Japanese and Spanish
- Extensive multi-media technical resources to help you
- We investigate all quality concerns to ensure our products perform to the highest standards

If the product does not perform as described on this datasheet, we will offer a refund or replacement. For full details of the Abpromise, please visit <https://www.abcam.co.jp/abpromise> or contact our technical team.

## Terms and conditions

- Guarantee only valid for products bought direct from Abcam or one of our authorized distributors