

Product datasheet

Anti-Heme Oxygenase 1 antibody [GTS-1] ab12220

6 References [画像数 1](#)

製品の概要

製品名	Anti-Heme Oxygenase 1 antibody [GTS-1]
製品の詳細	Mouse monoclonal [GTS-1] to Heme Oxygenase 1
由来種	Mouse
特異性	It does not react with heme oxygenase 2.
アプリケーション	適用あり: Flow Cyt, ELISA, WB, IHC-P, IHC-Fr, Inhibition Assay
種交差性	交差種: Mouse, Rat, Human 非交差種: Rabbit
免疫原	Rat heme oxygenase 1.
特記事項	Abcam is committed to meeting high standards of ethical manufacturing and as such, we will be discontinuing this product, which has been generated by the ascites method, within the next year. We are sorry for any inconvenience this may cause. If you would like help finding an alternative product, please do not hesitate to contact our scientific support team.

製品の特性

製品の状態	Liquid
保存方法	Shipped at 4°C. Store at +4°C short term (1-2 weeks). Upon delivery aliquot. Store at -20°C or -80°C. Avoid freeze / thaw cycle.
バッファー	Preservative: None Constituents: 10mM PBS, pH 7.4
ポリ/モノ	モノクローナル
クローン名	GTS-1
アイソタイプ	IgG1

アプリケーション

Our [Abpromise guarantee](#) covers the use of **ab12220** in the following tested applications.

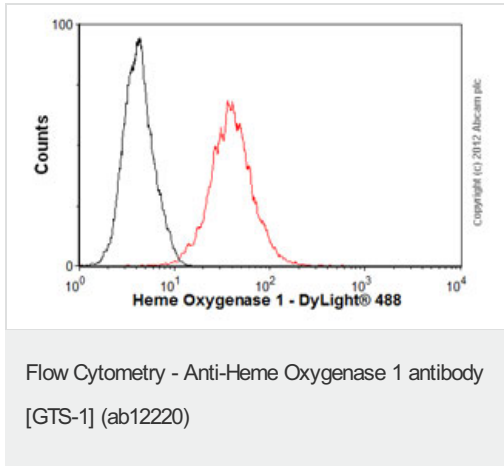
The application notes include recommended starting dilutions; optimal dilutions/concentrations should be determined by the end user.

アプリケーション	Abreviews	特記事項
Flow Cyt		Use 1µg for 10 ⁶ cells. ab170190 - Mouse monoclonal IgG1, is suitable for use as an isotype control with this antibody.
ELISA		1/10000.
WB		Use a concentration of 5 - 10 µg/ml. Predicted molecular weight: 32.8 kDa.
IHC-P		Use a concentration of 5 - 10 µg/ml.
IHC-Fr		Use a concentration of 5 - 10 µg/ml.
Inhibition Assay		Use at an assay dependent concentration. This antibody will inhibit the activity of human or rat heme oxygenase 1.

ターゲット情報

機能	Heme oxygenase cleaves the heme ring at the alpha methene bridge to form biliverdin. Biliverdin is subsequently converted to bilirubin by biliverdin reductase. Under physiological conditions, the activity of heme oxygenase is highest in the spleen, where senescent erythrocytes are sequestered and destroyed.
配列類似性	Belongs to the heme oxygenase family.
細胞内局在	Microsome. Endoplasmic reticulum.

画像



Overlay histogram showing HEK293 cells stained with ab12220 (red line). The cells were fixed with 4% paraformaldehyde (10 min) and then permeabilized with 0.1% PBS-Tween for 20 min. The cells were then incubated in 1x PBS / 10% normal goat serum / 0.3M glycine to block non-specific protein-protein interactions followed by the antibody (ab12220, 1µg/1x10⁶ cells) for 30 min at 22°C. The secondary antibody used was DyLight® 488 goat anti-mouse IgG (H+L) (ab96879) at 1/500 dilution for 30 min at 22°C. Isotype control antibody (black line) was mouse IgG1 [ICIGG1] (ab91353, 2µg/1x10⁶ cells) used under the same conditions. Acquisition of >5,000 events was performed. This antibody gave a positive signal in HEK293 cells fixed with 80% methanol (5 min)/permeabilized with 0.1% PBS-Tween for 20 min used under the same conditions.

Please note: All products are "FOR RESEARCH USE ONLY AND ARE NOT INTENDED FOR DIAGNOSTIC OR THERAPEUTIC USE"

Our Abpromise to you: Quality guaranteed and expert technical support

- Replacement or refund for products not performing as stated on the datasheet
- Valid for 12 months from date of delivery
- Response to your inquiry within 24 hours
- We provide support in Chinese, English, French, German, Japanese and Spanish
- Extensive multi-media technical resources to help you
- We investigate all quality concerns to ensure our products perform to the highest standards

If the product does not perform as described on this datasheet, we will offer a refund or replacement. For full details of the Abpromise, please visit <https://www.abcam.co.jp/abpromise> or contact our technical team.

Terms and conditions

- Guarantee only valid for products bought direct from Abcam or one of our authorized distributors