

Product datasheet

Anti-EXOC3L1 antibody ab122068

画像数 2

製品の概要

製品名	Anti-EXOC3L1 antibody
製品の詳細	Rabbit polyclonal to EXOC3L1
由来種	Rabbit
アプリケーション	適用あり: IHC-P, ICC/IF
種交差性	交差種: Human
免疫原	antigen sequence: MGSLELGPEA DVSQLEPLLT LENIEQLEAT FVANIQASVS QWLQNALDGE VAEWGREHGP NTDPSPGSYS PMPAMLQIL EENIRVASLV SESLQQRVHG MALSELGTFL RSFSDALIRF SRDHFGRKSM APHYVPYL corresponding to amino acids in Human EXOC3L1. Run BLAST with ExPASy Run BLAST with NCBI
ポジティブ・コントロール	Human kidney tissue.

製品の特性

製品の状態	Liquid
保存方法	Shipped at 4°C. Store at -20°C or -80°C. Avoid freeze / thaw cycle. Store undiluted.
バッファー	pH: 7.20 Preservative: 0.02% Sodium azide Constituents: 59% PBS, 40% Glycerol
精製度	Immunogen affinity purified
ポリ/モノ	ポリクローナル
アイソタイプ	IgG

アプリケーション

Our [Abpromise guarantee](#) covers the use of **ab122068** in the following tested applications.

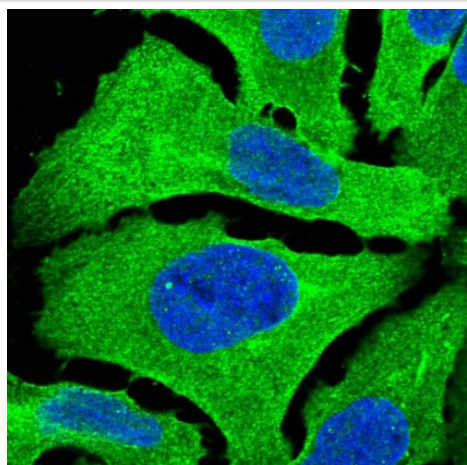
The application notes include recommended starting dilutions; optimal dilutions/concentrations should be determined by the end user.

アプリケーション	Abreviews	特記事項
IHC-P		1/200 - 1/500. Perform heat mediated antigen retrieval with citrate buffer pH 6 before commencing with IHC staining protocol.
ICC/IF		Use a concentration of 1 - 4 µg/ml. Recommend PFA Fixation and Triton X-100 treatment

ターゲット情報

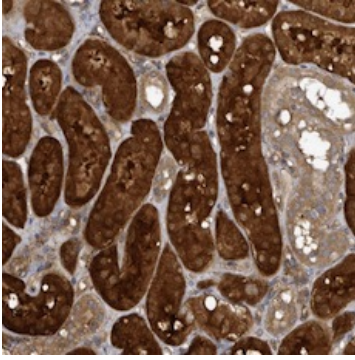
機能	As part of the exocyst, may play a role in regulated exocytosis of insulin granules.
配列類似性	Belongs to the SEC6 family.
細胞内局在	Cytoplasmic vesicle > secretory vesicle. Colocalizes with insulin granules.

画像



Immunofluorescent staining of Human cell line U-2 OS shows positivity in plasma membrane, cytoplasm and cytoskeleton (microtubules). Recommended concentration of ab122068 1-4 µg/ml. Cells treated with PFA/Triton X-100.

Immunocytochemistry/ Immunofluorescence - Anti-EXOC3L1 antibody (ab122068)



ab122068, at 1/200 dilution, staining EXOC3L1 in paraffin-embedded Human kidney by Immunohistochemistry

Immunohistochemistry (Formalin/PFA-fixed paraffin-embedded sections) - Anti-EXOC3L1 antibody (ab122068)

Please note: All products are "FOR RESEARCH USE ONLY AND ARE NOT INTENDED FOR DIAGNOSTIC OR THERAPEUTIC USE"

Our Abpromise to you: Quality guaranteed and expert technical support

- Replacement or refund for products not performing as stated on the datasheet
- Valid for 12 months from date of delivery
- Response to your inquiry within 24 hours
- We provide support in Chinese, English, French, German, Japanese and Spanish
- Extensive multi-media technical resources to help you
- We investigate all quality concerns to ensure our products perform to the highest standards

If the product does not perform as described on this datasheet, we will offer a refund or replacement. For full details of the Abpromise, please visit <https://www.abcam.co.jp/abpromise> or contact our technical team.

Terms and conditions

- Guarantee only valid for products bought direct from Abcam or one of our authorized distributors