


## Product datasheet

# Anti-CHST5 antibody ab118108

画像数 1

### 製品の概要

製品名	Anti-CHST5 antibody
製品の詳細	Mouse monoclonal to CHST5
由来種	Mouse
アプリケーション	適用あり: WB
種交差性	交差種: Recombinant fragment 交差が予測される動物種: Human 
免疫原	Recombinant fragment (GSGIGKPIEA FHTSSRNARN VSQAWRHALP FTKILRVQEV CAGALQLLGY RPVYSADQQR DLTLDLVLPR GPDHFSWASP D) corresponding to amino acids 310-391 of Human CHST5 with a proprietary tag (NP_036258). <a href="#">Run BLAST with ExPASy</a> <a href="#">Run BLAST with NCBI</a>
ポジティブ・コントロール	Recombinant Protein

### 製品の特性

製品の状態	Liquid
保存方法	Shipped at 4°C. Upon delivery aliquot. Store at -20°C or -80°C. Avoid freeze / thaw cycle.
バッファー	pH: 7.20 Constituent: 99% PBS
精製度	Protein A purified
ポリ/モノ	モノクローナル
アイソタイプ	IgG2b
軽鎖の種類	kappa

### アプリケーション

Our [Abpromise guarantee](#) covers the use of **ab118108** in the following tested applications.

The application notes include recommended starting dilutions; optimal dilutions/concentrations should be determined by the end user.

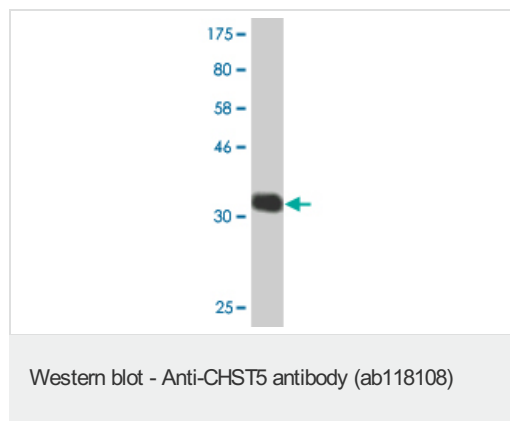
アプリケーション	Abreviews	特記事項
----------	-----------	------

WB Use a concentration of 1 - 5 µg/ml. Predicted molecular weight: 46 kDa. This antibody has only been tested in WB against the recombinant fragment used as immunogen. We have no data on the detection of endogenous protein.

## ターゲット情報

機能	Catalyzes the transfer of sulfate to position 6 of non-reducing N-acetylglucosamine (GlcNAc) residues and O-linked sugars of mucin-type acceptors. Acts on the non-reducing terminal GlcNAc of short carbohydrate substrates. However, it does not transfer sulfate to longer carbohydrate substrates that have poly-N-acetyllactosamine structures. Has no activity toward keratan. Not involved in generating HEV-expressed ligands for L-selectin. Its substrate specificity may be influenced by its subcellular location.
組織特異性	Predominantly expressed in small and large intestines and colon. Weakly expressed in lymphocytes. Not expressed in other tissues. Down-regulated in colonic adenocarcinomas.
配列類似性	Belongs to the sulfotransferase 1 family. Gal/GlcNAc/GalNAc subfamily.
細胞内局在	Golgi apparatus membrane. Golgi membrane, early secretory pathway.

## 画像



Anti-CHST5 antibody (ab118108) at 5 µg/ml + Immunogen at 0.2 µg

Developed using the ECL technique.

**Predicted band size:** 46 kDa

**Please note:** All products are "FOR RESEARCH USE ONLY AND ARE NOT INTENDED FOR DIAGNOSTIC OR THERAPEUTIC USE"

## Our Abpromise to you: Quality guaranteed and expert technical support

- Replacement or refund for products not performing as stated on the datasheet
- Valid for 12 months from date of delivery
- Response to your inquiry within 24 hours
- We provide support in Chinese, English, French, German, Japanese and Spanish
- Extensive multi-media technical resources to help you
- We investigate all quality concerns to ensure our products perform to the highest standards

If the product does not perform as described on this datasheet, we will offer a refund or replacement. For full details of the Abpromise, please visit <https://www.abcam.co.jp/abpromise> or contact our technical team.

## Terms and conditions

---

- Guarantee only valid for products bought direct from Abcam or one of our authorized distributors