

Product datasheet

Anti-SPSB1 antibody ab118101

画像数 1

製品の概要

製品名	Anti-SPSB1 antibody
製品の詳細	Mouse monoclonal to SPSB1
由来種	Mouse
アプリケーション	適用あり: ELISA, Sandwich ELISA
種交差性	交差種: Recombinant fragment 交差が予測される動物種: Human
免疫原	Recombinant full length protein, corresponding to amino acids 1-274 of Human SPSB1 with a proprietary tag (AAH15711).
ポジティブ・コントロール	Recombinant Protein.

製品の特性

製品の状態	Liquid
保存方法	Shipped at 4°C. Upon delivery aliquot and store at -20°C or -80°C. Avoid repeated freeze / thaw cycles.
バッファー	pH: 7.20 Constituent: 99% PBS
精製度	Protein A purified
ポリ/モノ	モノクローナル
アイソタイプ	IgG2a
軽鎖の種類	kappa

アプリケーション

Our [Abpromise guarantee](#) covers the use of **ab118101** in the following tested applications.

The application notes include recommended starting dilutions; optimal dilutions/concentrations should be determined by the end user.

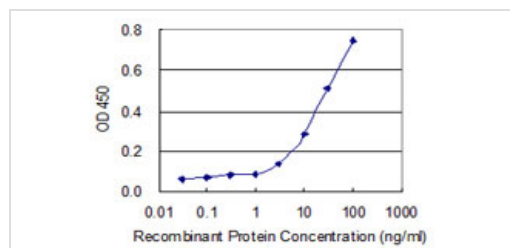
アプリケーション	Abreviews	特記事項
ELISA		Use at an assay dependent dilution.

アプリケーション	Abreviews	特記事項
Sandwich ELISA		Use a concentration of 10 µg/ml.

ターゲット情報

機能	Probable substrate recognition component of a SCF-like ECS (Elongin BC-CUL2/5-SOCS-box protein) E3 ubiquitin-protein ligase complex which mediates the ubiquitination and subsequent proteasomal degradation of target proteins.
パスウェイ	Protein modification; protein ubiquitination.
配列類似性	Belongs to the SPSB family. Contains 1 B30.2/SPRY domain. Contains 1 SOCS box domain.
ドメイン	The SOCS box domain mediates the interaction with the Elongin BC complex, an adapter module in different E3 ubiquitin ligase complexes (By similarity). The B30.2/SPRY domain is involved in MET binding.
細胞内局在	Cytoplasm.

画像



ab118101 at 10 µg/ml as a capture antibody.
The detection limit for recombinant tagged SPSB1 is 1 ng/ml.

Sandwich ELISA - Anti-SPSB1 antibody (ab118101)

Please note: All products are "FOR RESEARCH USE ONLY AND ARE NOT INTENDED FOR DIAGNOSTIC OR THERAPEUTIC USE"

Our Abpromise to you: Quality guaranteed and expert technical support

- Replacement or refund for products not performing as stated on the datasheet
- Valid for 12 months from date of delivery
- Response to your inquiry within 24 hours
- We provide support in Chinese, English, French, German, Japanese and Spanish
- Extensive multi-media technical resources to help you
- We investigate all quality concerns to ensure our products perform to the highest standards

If the product does not perform as described on this datasheet, we will offer a refund or replacement. For full details of the Abpromise, please visit <https://www.abcam.co.jp/abpromise> or contact our technical team.

Terms and conditions

- Guarantee only valid for products bought direct from Abcam or one of our authorized distributors