

Product datasheet

Anti-TEX28 antibody ab118077

画像数 3

製品の概要

製品名	Anti-TEX28 antibody
製品の詳細	Mouse monoclonal to TEX28
由来種	Mouse
アプリケーション	適用あり: WB, Sandwich ELISA
種交差性	交差種: Recombinant fragment 交差が予測される動物種: Human
免疫原	Recombinant full length protein, corresponding to amino acids 1-411 of Human TEX28 with Proprietary tag (tag alone is 26 KDa) (AAH26183).
ポジティブ・コントロール	Recombinant TEX28 protein, TEX28 transfected 293T cell lysate

製品の特性

製品の状態	Liquid
保存方法	Shipped at 4°C. Upon delivery aliquot. Store at -20°C or -80°C. Avoid freeze / thaw cycle.
バッファー	pH: 7.20 Constituent: 99% PBS
精製度	Protein A purified
ポリ/モノ	モノクローナル
アイソタイプ	IgG2a
軽鎖の種類	kappa

アプリケーション

Our [Abpromise guarantee](#) covers the use of **ab118077** in the following tested applications.

The application notes include recommended starting dilutions; optimal dilutions/concentrations should be determined by the end user.

アプリケーション	Abreviews	特記事項
WB		Use a concentration of 1 - 5 µg/ml. Predicted molecular weight: 46 kDa.

アプリケーション**Abreviews****特記事項**

Sandwich ELISA

Use a concentration of 10 µg/ml.

ターゲット情報**組織特異性**

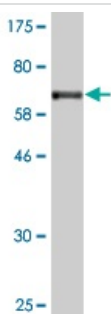
Testis specific.

配列類似性

Belongs to the TEX28 family.

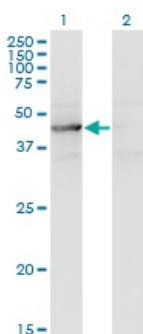
細胞内局在

Membrane.

画像

Western blot - Anti-TEX28 antibody (ab118077)

Anti-TEX28 antibody (ab118077) at 5 µg +
Recombinant TEX28 protein at 0.2 µg

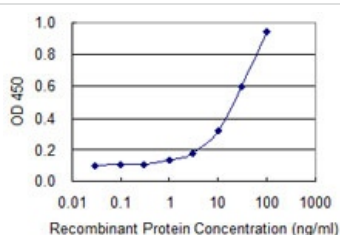
Predicted band size: 46 kDa

Western blot - Anti-TEX28 antibody (ab118077)

All lanes : Anti-TEX28 antibody (ab118077)
at 5 µg/ml

Lane 1 : TEX28 transfected 293T cell lysate**Lane 2 :** Non-transfected 293T cell lysate

Lysates/proteins at 25 µg per lane.

Predicted band size: 46 kDa

Sandwich ELISA - Anti-TEX28 antibody (ab118077)

Detection limit for recombinant tagged TEX28
is 0.3 ng/ml as a capture antibody.

Please note: All products are "FOR RESEARCH USE ONLY AND ARE NOT INTENDED FOR DIAGNOSTIC OR THERAPEUTIC USE"

Our Abpromise to you: Quality guaranteed and expert technical support

- Replacement or refund for products not performing as stated on the datasheet
- Valid for 12 months from date of delivery
- Response to your inquiry within 24 hours

- We provide support in Chinese, English, French, German, Japanese and Spanish
- Extensive multi-media technical resources to help you
- We investigate all quality concerns to ensure our products perform to the highest standards

If the product does not perform as described on this datasheet, we will offer a refund or replacement. For full details of the Abpromise, please visit <https://www.abcam.co.jp/abpromise> or contact our technical team.

Terms and conditions

- Guarantee only valid for products bought direct from Abcam or one of our authorized distributors