

## Product datasheet

# Anti-PPWD1 antibody [1G5] ab118029

### 画像数 2

#### 製品の概要

製品名	Anti-PPWD1 antibody [1G5]
製品の詳細	Mouse monoclonal [1G5] to PPWD1
由来種	Mouse
アプリケーション	<b>適用あり:</b> WB
種交差性	<b>交差種:</b> Rat, Dog, Human, Monkey
免疫原	Recombinant full length Human PPWD1 produced in HEK293T cells (NP_056157).
ポジティブ・コントロール	HEK293T transfected with pCMV6-ENTRY PPWD1 cDNA; HepG2, HeLa, HT29, A549, COS7, Jurkat, MDCK, PC12 and MCF7 cell lysates.
特記事項	Stable for 12 months from date of receipt.

#### 製品の特性

製品の状態	Liquid
保存方法	Shipped at 4°C. Upon delivery aliquot and store at -20°C. Avoid repeated freeze / thaw cycles.
バッファー	pH: 7.30 Preservative: 0.02% Sodium azide Constituents: 48% PBS, 1% BSA, 50% Glycerol
精製度	Protein A purified
特記事項(精製)	ab118029 is purified from Mouse ascites fluids by affinity chromatography.
ポリ/モノ	モノクローナル
クローン名	1G5
アイソタイプ	IgG2b

#### アプリケーション

Our [Abpromise guarantee](#) covers the use of **ab118029** in the following tested applications.

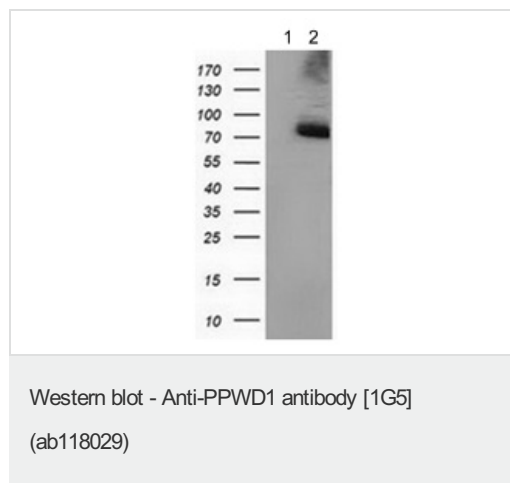
The application notes include recommended starting dilutions; optimal dilutions/concentrations should be determined by the end user.

アプリケーション	Abreviews	特記事項
WB		1/200 - 1/500. Predicted molecular weight: 74 kDa.

## ターゲット情報

<b>機能</b>	Putative peptidylprolyl isomerase (PPIase). PPIases accelerate the folding of proteins. It catalyzes the cis-trans isomerization of proline imidic peptide bonds in oligopeptides. May be involved in pre-mRNA splicing.
<b>配列類似性</b>	Belongs to the cyclophilin-type PPIase family. PPIL1 subfamily. Contains 1 PPIase cyclophilin-type domain. Contains 4 WD repeats.
<b>細胞内局在</b>	Nucleus. Associated with spliceosomal complexes.

## 画像



**All lanes** : Anti-PPWD1 antibody [1G5] (ab118029) at 1/200 dilution

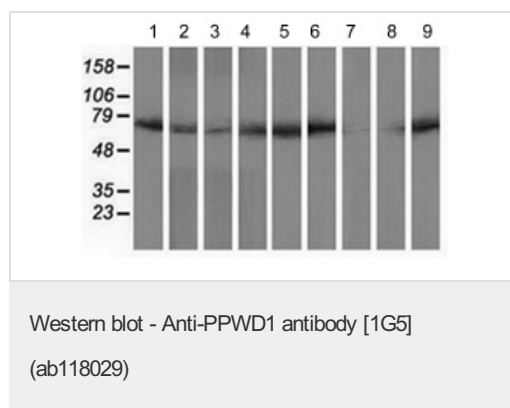
**Lane 1** : HEK293T cell lysate transfected with pCMV6-ENTRY control cDNA

**Lane 2** : HEK293T cell lysate transfected with pCMV6-ENTRY PPWD1 cDNA

Lysates/proteins at 5 µg per lane.

**Predicted band size:** 74 kDa

HEK293T cell lysates were generated from transient transfection of the cDNA clone (RC204570)



**All lanes** : Anti-PPWD1 antibody [1G5] (ab118029) at 1/200 dilution

**Lane 1** : HepG2 cell lysate

**Lane 2** : HeLa cell lysate

**Lane 3** : HT29 cell lysate

**Lane 4** : A549 cell lysate

**Lane 5** : COS7 cell lysate

**Lane 6** : Jurkat cell lysate

**Lane 7** : MDCK cell lysate

**Lane 8** : PC12 cell lysate

**Lane 9** : MCF7 cell lysate

Lysates/proteins at 35 µg per lane.

**Predicted band size:** 74 kDa

HEK293T cell lysates were generated from transient transfection of the cDNA clone (RC204570)

**Please note:** All products are "FOR RESEARCH USE ONLY AND ARE NOT INTENDED FOR DIAGNOSTIC OR THERAPEUTIC USE"

### **Our Abpromise to you: Quality guaranteed and expert technical support**

---

- Replacement or refund for products not performing as stated on the datasheet
- Valid for 12 months from date of delivery
- Response to your inquiry within 24 hours
- We provide support in Chinese, English, French, German, Japanese and Spanish
- Extensive multi-media technical resources to help you
- We investigate all quality concerns to ensure our products perform to the highest standards

If the product does not perform as described on this datasheet, we will offer a refund or replacement. For full details of the Abpromise, please visit <https://www.abcam.co.jp/abpromise> or contact our technical team.

### **Terms and conditions**

---

- Guarantee only valid for products bought direct from Abcam or one of our authorized distributors