

## Product datasheet

# Anti-GJC1 antibody ab116032

### 画像数 1

#### 製品の概要

製品名	Anti-GJC1 antibody
製品の詳細	Rabbit polyclonal to GJC1
由来種	Rabbit
アプリケーション	<b>適用あり:</b> WB
種交差性	<b>交差種:</b> Human
免疫原	Synthetic peptide corresponding to a region within C terminal amino acids 198-247(GLLSALLSVA ELGHLLWKGR PRAGERDNRN NRAHEEAQKL LPPPPPPPP) of Human GJC1 (NP_689343). <a href="#">Run BLAST with ExPASy</a> <a href="#">Run BLAST with NCBI</a>
ポジティブ・コントロール	293T cell lysate.

#### 製品の特性

製品の状態	Liquid
保存方法	Shipped at 4°C. Upon delivery aliquot and store at -20°C. Avoid repeated freeze / thaw cycles.
バッファー	Constituents: 97% PBS, 2% Sucrose
精製度	Immunogen affinity purified
ポリ/モノ	ポリクローナル
アイソタイプ	IgG

#### アプリケーション

Our [Abpromise guarantee](#) covers the use of **ab116032** in the following tested applications.

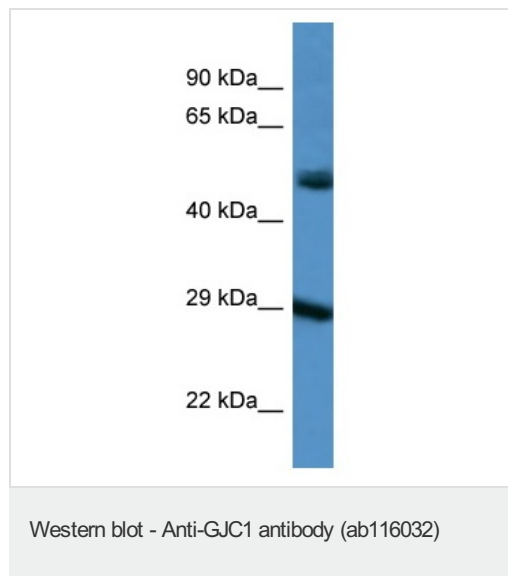
The application notes include recommended starting dilutions; optimal dilutions/concentrations should be determined by the end user.

アプリケーション	Abreviews	特記事項
WB		Use a concentration of 1 µg/ml. Predicted molecular weight: 32 kDa. Good results were obtained when blocked with 5% non-fat dry milk in 0.05% PBS-T.

## ターゲット情報

機能	One gap junction consists of a cluster of closely packed pairs of transmembrane channels, the connexons, through which materials of low MW diffuse from one cell to a neighboring cell.
組織特異性	Expressed in vascular smooth muscle cells. Found in heart, colon, and artery (at protein level). Found in cerebral cortex, heart, liver, lung, kidney, spleen and testis.
配列類似性	Belongs to the connexin family. Delta-type subfamily.
細胞内局在	Cell membrane. Cell junction > gap junction.

## 画像



Anti-GJC1 antibody (ab116032) at 1 µg/ml +  
293T cell lysate at 10 µg

**Predicted band size:** 32 kDa

Gel concentration: 12%.

**Please note:** All products are "FOR RESEARCH USE ONLY AND ARE NOT INTENDED FOR DIAGNOSTIC OR THERAPEUTIC USE"

## Our Abpromise to you: Quality guaranteed and expert technical support

- Replacement or refund for products not performing as stated on the datasheet
- Valid for 12 months from date of delivery
- Response to your inquiry within 24 hours
- We provide support in Chinese, English, French, German, Japanese and Spanish
- Extensive multi-media technical resources to help you
- We investigate all quality concerns to ensure our products perform to the highest standards

If the product does not perform as described on this datasheet, we will offer a refund or replacement. For full details of the Abpromise, please visit <https://www.abcam.co.jp/abpromise> or contact our technical team.

## Terms and conditions

- Guarantee only valid for products bought direct from Abcam or one of our authorized distributors