


Product datasheet

Anti-Cathepsin V antibody ab115859

画像数 1

製品の概要

製品名	Anti-Cathepsin V antibody
製品の詳細	Rabbit polyclonal to Cathepsin V
由来種	Rabbit
アプリケーション	適用あり: WB
種交差性	交差種: Human 交差が予測される動物種: Mouse, Rat, Sheep, Rabbit, Horse, Chicken, Guinea pig, Cow, Cat, Dog, Zebrafish, African green monkey 
免疫原	Synthetic peptide corresponding to a region within N terminal amino acids 111-160 (FLDLPKSVDW RKKGYVTPVK NQKQCGSCWA FSATGALEGQ MFRKTGKLVS) of Human Cathepsin V (NP_001324). <a href="#">Run BLAST with ExPASy</a> <a href="#">Run BLAST with NCBI</a>
ポジティブ・コントロール	HepG2 cell lysate.

製品の特性

製品の状態	Liquid
保存方法	Shipped at 4°C. Store at +4°C short term (1-2 weeks). Upon delivery aliquot. Store at -20°C long term.
バッファー	Preservative: 0.09% Sodium azide Constituents: 2% Sucrose, PBS
精製度	Immunogen affinity purified
ポリ/モノ	ポリクローナル
アイソタイプ	IgG

アプリケーション

Our [Abpromise guarantee](#) covers the use of **ab115859** in the following tested applications.

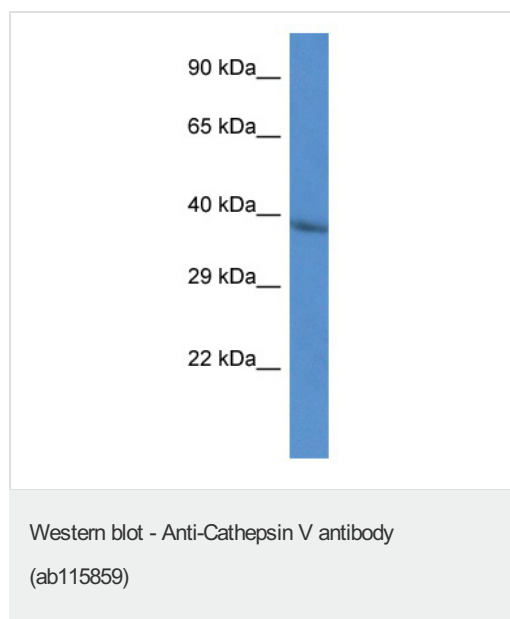
The application notes include recommended starting dilutions; optimal dilutions/concentrations should be determined by the end user.

アプリケーション	Abreviews	特記事項
WB		Use a concentration of 1 µg/ml. Predicted molecular weight: 37 kDa. Good results were obtained when blocked with 5% non-fat dry milk in 0.05% PBS-T.

## ターゲット情報

機能	Cysteine protease. May have an important role in corneal physiology.
組織特異性	Predominantly expressed in the thymus and testis. Also expressed in corneal epithelium, and to a lesser extent in conjunctival epithelium and skin.
配列類似性	Belongs to the peptidase C1 family.
細胞内局在	Lysosome.

## 画像



Anti-Cathepsin V antibody (ab115859) at 1 µg/ml + HepG2 cell lysate at 10 µg

**Predicted band size:** 37 kDa

Gel concentration: 12%

**Please note:** All products are "FOR RESEARCH USE ONLY AND ARE NOT INTENDED FOR DIAGNOSTIC OR THERAPEUTIC USE"

## Our Abpromise to you: Quality guaranteed and expert technical support

- Replacement or refund for products not performing as stated on the datasheet
- Valid for 12 months from date of delivery
- Response to your inquiry within 24 hours
- We provide support in Chinese, English, French, German, Japanese and Spanish
- Extensive multi-media technical resources to help you
- We investigate all quality concerns to ensure our products perform to the highest standards

If the product does not perform as described on this datasheet, we will offer a refund or replacement. For full details of the Abpromise,

please visit <https://www.abcam.co.jp/abpromise> or contact our technical team.

## **Terms and conditions**

---

- Guarantee only valid for products bought direct from Abcam or one of our authorized distributors