




Product datasheet

Anti-Mad2L1 antibody [OTI4D2] ab114036

画像数 2

製品の概要

製品名	Anti-Mad2L1 antibody [OTI4D2]
製品の詳細	Mouse monoclonal [OTI4D2] to Mad2L1
由来種	Mouse
アプリケーション	適用あり: WB, ICC/IF
種交差性	交差種: Human 交差が予測される動物種: Mouse 
免疫原	Recombinant full length protein corresponding to Human Mad2L1 aa 2-205. Produced in HEK-293T cells (NP_002349). Sequence: ALQLSREQGITLRGSAEIVAEFFSFGINSILYQRGIYPSE TFTRVQKYGL TLLVTTDLELIKYLNNVVEQLKDWLYKCSVQKLVVVISNI ESGEVLERWQ FDIECDKTAKDDAPREKSQKAIQDEIRSVIRQITATVTF LPLLEVSCSF DLLIYTDKDLVVPEKWEESGPQFITNSEEVRLRSFTTTIH KVNSMVAYKI PVND Database link: Q13257  Run BLAST with  Run BLAST with
ポジティブ・コントロール	WB: HEK-293T cell lysate transfected with or pCMV6-ENTRY Mad2L1 cDNA. ICC/IF: COS-7 cells transiently transfected by pCMV6-ENTRY Mad2L1.
特記事項	Clone OTI4D2 (formerly 4D2).

製品の特性

製品の状態	Liquid
保存方法	Shipped at 4°C. Store at +4°C short term (1-2 weeks). Upon delivery aliquot. Store at -20°C. Avoid freeze / thaw cycle.
バッファー	pH: 7.30 Preservative: 0.02% Sodium azide Constituents: PBS, 50% Glycerol, 1% BSA

精製度	Affinity purified
特記事項(精製)	Purified from cell culture supernatant by affinity chromatography.
ポリ/モノ	モノクローナル
クローン名	OT4D2
アイソタイプ	IgG2a

アプリケーション

Our [Abpromise guarantee](#) covers the use of **ab114036** in the following tested applications.

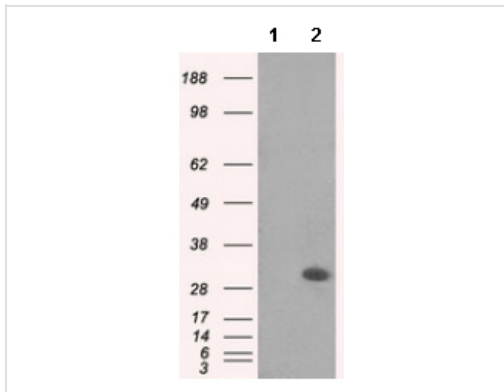
The application notes include recommended starting dilutions; optimal dilutions/concentrations should be determined by the end user.

アプリケーション	Abreviews	特記事項
WB		1/1000. Predicted molecular weight: 24 kDa.
ICC/IF		1/100.

ターゲット情報

機能	Component of the spindle-assembly checkpoint that prevents the onset of anaphase until all chromosomes are properly aligned at the metaphase plate. Required for the execution of the mitotic checkpoint which monitors the process of kinetochore-spindle attachment and inhibits the activity of the anaphase promoting complex by sequestering CDC20 until all chromosomes are aligned at the metaphase plate.
配列類似性	Belongs to the MAD2 family. Contains 1 HORMA domain.
ドメイン	The protein has two highly different native conformations, an inactive open conformation that cannot bind CDC20 and that predominates in cytosolic monomers, and an active closed conformation. The protein in the closed conformation preferentially dimerizes with another molecule in the open conformation, but can also form a dimer with a molecule in the closed conformation. Formation of a heterotetrameric core complex containing two molecules of MAD1L1 and of MAD2L1 in the closed conformation promotes binding of another molecule of MAD2L1 in the open conformation and the conversion of the open to the closed form, and thereby promotes interaction with CDC20.
翻訳後修飾	Phosphorylated on multiple serine residues. The level of phosphorylation varies during the cell cycle and is highest during mitosis. Phosphorylation abolishes interaction with MAD1L1 and reduces interaction with CDC20.
細胞内局在	Nucleus. Chromosome > centromere > kinetochore. Cytoplasm. Recruited by MAD1L1 to unattached kinetochores (Probable). Recruited to the nuclear pore complex by TPR during interphase. Recruited to kinetochores in late prometaphase after BUB1, CENPF, BUB1B and CENPE. Kinetochore association requires the presence of NEK2. Kinetochore association is repressed by UBD.

画像



Western blot - Anti-Mad2L1 antibody [OT14D2] (ab114036)

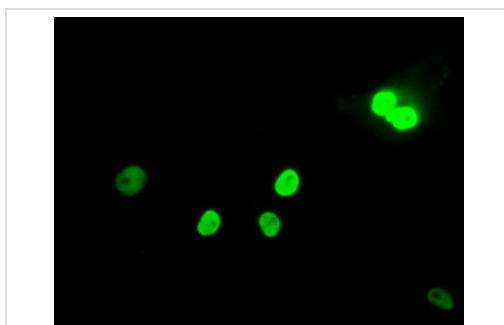
All lanes : Anti-Mad2L1 antibody [OT14D2] (ab114036) at 1/1000 dilution

Lane 1 : HEK-293T (human epithelial cell line from embryonic kidney transformed with large T antigen) cell lysate transfected with the pCMV6-ENTRY control cDNA

Lane 2 : HEK-293T cell lysate transfected with the pCMV6-ENTRY Mad2L1 cDNA

Lysates/proteins at 5 µg per lane.

Predicted band size: 24 kDa



Immunocytochemistry/ Immunofluorescence - Anti-Mad2L1 antibody [OT14D2] (ab114036)

COS-7 (african green monkey kidney fibroblast-like cell line) cells transiently transfected by pCMV6-ENTRY Mad2L1 stained for Mad2L1 (green) using ab114036 at 1/100 dilution in ICC/IF.

Please note: All products are "FOR RESEARCH USE ONLY AND ARE NOT INTENDED FOR DIAGNOSTIC OR THERAPEUTIC USE"

Our Abpromise to you: Quality guaranteed and expert technical support

- Replacement or refund for products not performing as stated on the datasheet
- Valid for 12 months from date of delivery
- Response to your inquiry within 24 hours
- We provide support in Chinese, English, French, German, Japanese and Spanish
- Extensive multi-media technical resources to help you
- We investigate all quality concerns to ensure our products perform to the highest standards

If the product does not perform as described on this datasheet, we will offer a refund or replacement. For full details of the Abpromise, please visit <https://www.abcam.co.jp/abpromise> or contact our technical team.

Terms and conditions

- Guarantee only valid for products bought direct from Abcam or one of our authorized distributors