

## Product datasheet

# Anti-PKC epsilon antibody [1B4] ab114034

1 References [画像数 9](#)

### 製品の概要

|              |   |
|--------------|---|
| 製品名          | Anti-PKC epsilon antibody [1B4]   |
| 製品の詳細        | Mouse monoclonal [1B4] to PKC epsilon   |
| 由来種          | Mouse   |
| アプリケーション     | <b>適用あり:</b> WB, IHC-P, Flow Cyt, ICC/IF  |
| 種交差性         | <b>交差種:</b> Dog, Human, Monkey  |
| 免疫原          | Recombinant full length Human PKC epsilon produced in HEK293T cells (NP_005391).  |
| ポジティブ・コントロール | Human kidney, prostate, prostate carcinoma and lymphoma tissues; HEK293T cell lysate transfected with pCMV6-ENTRY PKC epsilon cDNA; HepG2, HeLa, COS7, MDCK, HT29 and A549 cell extracts; Transfected COS7 cells transiently transfected by pCMV6-ENTRY PKC epsilon; HeLa and Jurkat cells. |
| 特記事項         | Dilute in PBS (pH7.3) before use. Stable for 12 months from date of receipt.  |

### 製品の特性

|          |  |
|----------|--|
| 製品の状態    | Liquid   |
| 保存方法     | Shipped at 4°C. Upon delivery aliquot and store at -20°C. Avoid repeated freeze / thaw cycles. |
| バッファー    | pH: 7.30<br>Preservative: 0.02% Sodium azide<br>Constituents: 48% PBS, 50% Glycerol, 1% BSA    |
| 精製度      | Protein A purified   |
| 特記事項(精製) | ab114034 is purified from Mouse ascites fluid by affinity chromatography.                      |
| ポリ/モノ    | モノクローナル  |
| クローン名    | 1B4  |
| アイソタイプ   | IgG2b  |

### アプリケーション

Our [Abpromise guarantee](#) covers the use of **ab114034** in the following tested applications.

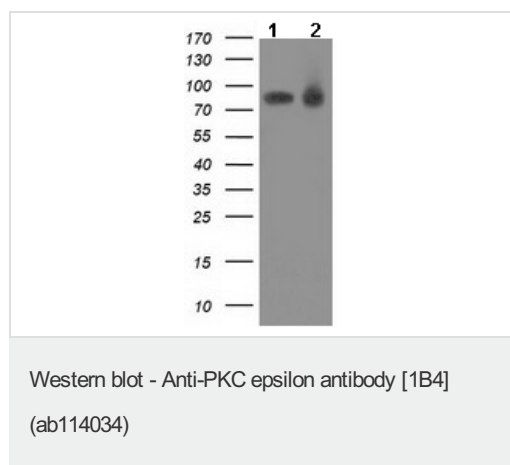
The application notes include recommended starting dilutions; optimal dilutions/concentrations should be determined by the end user.

| アプリケーション | Abreviews | 特記事項   |
|----------|-----------|--|
| WB       |           | 1/500 - 1/2000. Predicted molecular weight: 84 kDa.  |
| IHC-P    |           | 1/150.   |
| Flow Cyt |           | 1/100.<br><a href="#">ab170192</a> - Mouse monoclonal IgG2b, is suitable for use as an isotype control with this antibody. |
| ICC/IF   |           | 1/100.   |

## ターゲット情報

|       |   |
|-------|---|
| 機能    | This is calcium-independent, phospholipid-dependent, serine- and threonine-specific enzyme. PKC is activated by diacylglycerol which in turn phosphorylates a range of cellular proteins. PKC also serves as the receptor for phorbol esters, a class of tumor promoters. |
| 配列類似性 | Belongs to the protein kinase superfamily. AGC Ser/Thr protein kinase family. PKC subfamily. Contains 1 AGC-kinase C-terminal domain. Contains 1 C2 domain. Contains 2 phorbol-ester/DAG-type zinc fingers. Contains 1 protein kinase domain.                             |
| ドメイン  | The C1 domain, containing the phorbol ester/DAG-type region 1 (C1A) and 2 (C1B), is the diacylglycerol sensor and the C2 domain is a non-calcium binding domain.  |
| 翻訳後修飾 | Phosphorylation on Thr-566 by PDPK1 triggers autophosphorylation on Ser-729.  |

## 画像



**All lanes** : Anti-PKC epsilon antibody [1B4] (ab114034) at 1/500 dilution

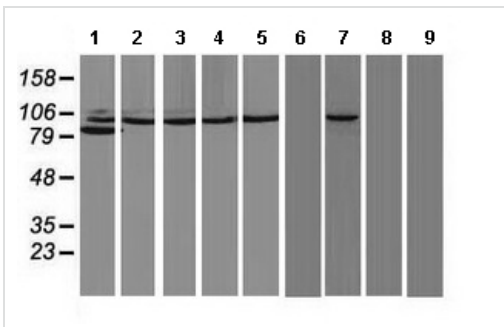
**Lane 1** : HEK293T cell lysate transfected with pCMV6-ENTRY control cDNA

**Lane 2** : HEK293T cell lysate transfected with pCMV6-ENTRY PKC epsilon cDNA

Lysates/proteins at 5 µg per lane.

**Predicted band size:** 84 kDa

HEK293T cell lysates were generated from transient transfection of the cDNA clone (RC217702)



Western blot - Anti-PKC epsilon antibody [1B4] (ab114034)

**All lanes** : Anti-PKC epsilon antibody [1B4] (ab114034) at 1/500 dilution

**Lane 1** : HepG2 cell extract

**Lane 2** : HeLa cell extract

**Lane 3** : HT29 cell extract

**Lane 4** : A549 cell extract

**Lane 5** : COS7 cell extract

**Lane 6** : Jurkat cell extracts

**Lane 7** : MDCK cell extract

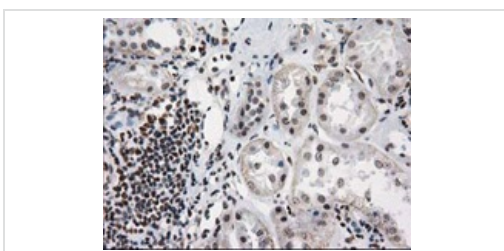
**Lane 8** : PC12 cell extract

**Lane 9** : MCF7 cell extract

Lysates/proteins at 35 µg per lane.

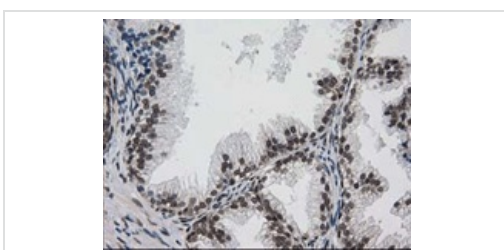
**Predicted band size:** 84 kDa

HEK293T cell lysates were generated from transient transfection of the cDNA clone (RC217702)



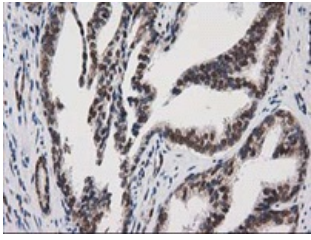
Immunohistochemistry (Formalin/PFA-fixed paraffin-embedded sections) - Anti-PKC epsilon antibody [1B4] (ab114034)

ab114034 at 1/150 dilution staining PKC epsilon in Paraffin-embedded Human Kidney tissue by Immunohistochemistry.



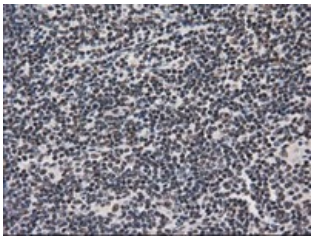
Immunohistochemistry (Formalin/PFA-fixed paraffin-embedded sections) - Anti-PKC epsilon antibody [1B4] (ab114034)

ab114034 at 1/150 dilution staining PKC epsilon in Paraffin-embedded Human Prostate tissue by Immunohistochemistry.



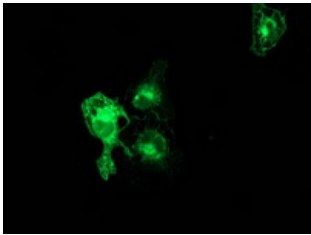
Immunohistochemistry (Formalin/PFA-fixed paraffin-embedded sections) - Anti-PKC epsilon antibody [1B4] (ab114034)

ab114034 at 1/150 dilution staining PKC epsilon in Paraffin-embedded Human Prostate carcinoma tissue by Immunohistochemistry.



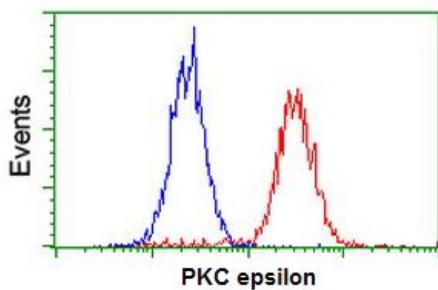
Immunohistochemistry (Formalin/PFA-fixed paraffin-embedded sections) - Anti-PKC epsilon antibody [1B4] (ab114034)

ab114034 at 1/150 dilution staining PKC epsilon in Paraffin-embedded Human Lymphoma tissue by Immunohistochemistry.



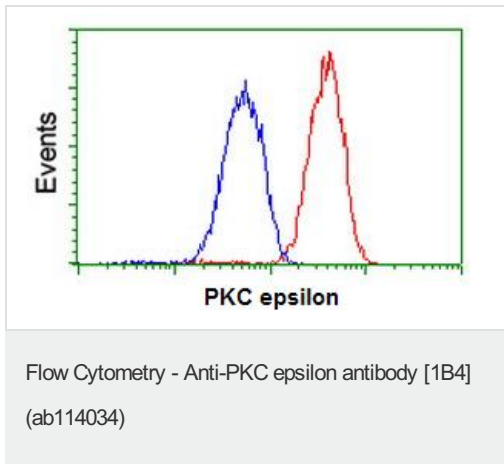
Immunocytochemistry/ Immunofluorescence - Anti-PKC epsilon antibody [1B4] (ab114034)

ab114034 at 1/100 dilution staining PKC epsilon in COS7 cells transiently transfected with pCMV6-ENTRY PKC epsilon by Immunofluorescence.



Flow Cytometry - Anti-PKC epsilon antibody [1B4] (ab114034)

ab114034 at 1/100 dilution staining PKC epsilon in HeLa cells by Flow cytometry (Red) compared to a nonspecific negative control antibody (Blue).



ab114034 at 1/100 dilution staining PKC epsilon in Jurkat cells by Flow cytometry (Red) compared to a nonspecific negative control antibody (Blue).

**Please note:** All products are "FOR RESEARCH USE ONLY AND ARE NOT INTENDED FOR DIAGNOSTIC OR THERAPEUTIC USE"

### Our Abpromise to you: Quality guaranteed and expert technical support

- Replacement or refund for products not performing as stated on the datasheet
- Valid for 12 months from date of delivery
- Response to your inquiry within 24 hours
- We provide support in Chinese, English, French, German, Japanese and Spanish
- Extensive multi-media technical resources to help you
- We investigate all quality concerns to ensure our products perform to the highest standards

If the product does not perform as described on this datasheet, we will offer a refund or replacement. For full details of the Abpromise, please visit <https://www.abcam.co.jp/abpromise> or contact our technical team.

### Terms and conditions

- Guarantee only valid for products bought direct from Abcam or one of our authorized distributors