

Product datasheet

Anti-Sorbitol Dehydrogenase antibody [9G9] ab114011

画像数 4

製品の概要

製品名	Anti-Sorbitol Dehydrogenase antibody [9G9]
製品の詳細	Mouse monoclonal [9G9] to Sorbitol Dehydrogenase
由来種	Mouse
アプリケーション	適用あり: Flow Cyt, ICC/IF
種交差性	交差種: Human
免疫原	Full length Human recombinant Sorbitol Dehydrogenase protein (NP_003095) produced in HEK293T cells.
ポジティブ・コントロール	IF: transfected COS7 cells. FC: HeLa cells, Jurkat cells, transfected HEK293T cells.

製品の特性

製品の状態	Liquid
保存方法	Shipped at 4°C. Upon delivery aliquot and store at -20°C. Avoid freeze / thaw cycles.
バッファー	pH: 7.30 Preservative: 0.02% Sodium azide Constituents: 48% PBS, 1% BSA, 50% Glycerol
精製度	IgG fraction
特記事項 (精製)	Purified from mouse ascites fluids by affinity chromatography
ポリ/モノ	モノクローナル
クローン名	9G9
アイソタイプ	IgG1

アプリケーション

Our [Abpromise guarantee](#) covers the use of **ab114011** in the following tested applications.

The application notes include recommended starting dilutions; optimal dilutions/concentrations should be determined by the end user.

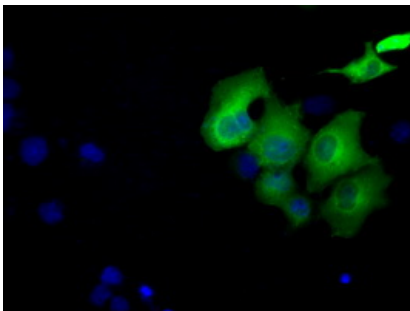
アプリケーション	Abreviews	特記事項
----------	-----------	------

アプリケーション	Abreviews	特記事項
Flow Cyt		1/100. ab170190 - Mouse monoclonal IgG1, is suitable for use as an isotype control with this antibody.
ICC/IF		1/100.

ターゲット情報

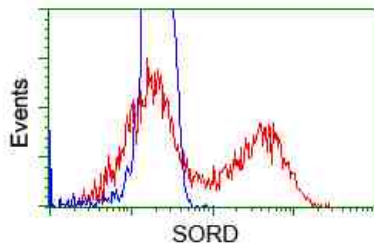
機能	Converts sorbitol to fructose. Part of the polyol pathway that plays an important role in sperm physiology. May play a role in the sperm motility by providing an energetic source for sperm.
組織特異性	Expressed in kidney and epithelial cells of both benign and malignant prostate tissue. Expressed in epididymis (at protein level).
配列類似性	Belongs to the zinc-containing alcohol dehydrogenase family.
細胞内局在	Mitochondrion membrane. Cell projection > cilium > flagellum. Associated with mitochondria of the midpiece and near the plasma membrane in the principal piece of the flagellum. Also found in the epididymosome, secreted by the epididymal epithelium and that transfers proteins from the epididymal fluid to the sperm surface.

画像



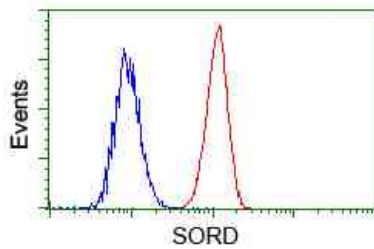
Immunofluorescent staining of COS7 cells transiently transfected with Sorbitol Dehydrogenase-expressing vector, using 1/100 [ab114011](#).

Immunocytochemistry/ Immunofluorescence - Anti-Sorbitol Dehydrogenase antibody [9G9] ([ab114011](#))



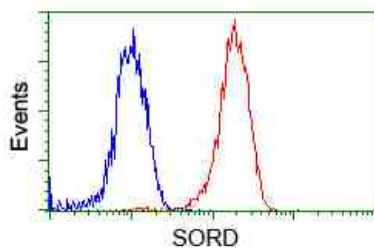
HEK293T cells transfected with either Sorbitol Dehydrogenase-expressing vector (Red) or empty vector control plasmid (Blue) were immunostained with 1/100 ab114011, and then analyzed by flow cytometry.

Flow Cytometry - Anti-Sorbitol Dehydrogenase antibody [9G9] (ab114011)



Flow cytometric analysis of HeLa cells, using 1/100 ab114011 (Red) compared to a nonspecific negative control antibody (Blue).

Flow Cytometry - Anti-Sorbitol Dehydrogenase antibody [9G9] (ab114011)



Flow cytometric analysis of Jurkat cells, using 1/100 ab114011 (Red) compared to a nonspecific negative control antibody (Blue).

Flow Cytometry - Anti-Sorbitol Dehydrogenase antibody [9G9] (ab114011)

Please note: All products are "FOR RESEARCH USE ONLY AND ARE NOT INTENDED FOR DIAGNOSTIC OR THERAPEUTIC USE"

Our Abpromise to you: Quality guaranteed and expert technical support

- Replacement or refund for products not performing as stated on the datasheet
- Valid for 12 months from date of delivery
- Response to your inquiry within 24 hours
- We provide support in Chinese, English, French, German, Japanese and Spanish
- Extensive multi-media technical resources to help you
- We investigate all quality concerns to ensure our products perform to the highest standards

If the product does not perform as described on this datasheet, we will offer a refund or replacement. For full details of the Abpromise,

please visit <https://www.abcam.co.jp/abpromise> or contact our technical team.

Terms and conditions

- Guarantee only valid for products bought direct from Abcam or one of our authorized distributors