

Product datasheet

Anti-SGLT1 antibody ab111103

画像数 1

製品の概要

| | |
|--------------|---|
| 製品名 | Anti-SGLT1 antibody |
| 製品の詳細 | Goat polyclonal to SGLT1 |
| 由来種 | Goat |
| アプリケーション | 適用あり: IHC-P |
| 種交差性 | 交差種: Human |
| 免疫原 | Synthetic peptide conjugated to KLH, corresponding to internal sequence amino acids of Human SGLT1. |
| ポジティブ・コントロール | Human small intestine tissue. |

製品の特性

| | |
|--------|--|
| 製品の状態 | Liquid |
| 保存方法 | Shipped at 4°C. Upon delivery aliquot and store at -20°C. Avoid freeze / thaw cycles. |
| バッファー | pH: 7.30 Preservative: 0.02% Sodium azide Constituents: Tris buffered saline, 0.5% BSA |
| 精製度 | Immunogen affinity purified |
| ポリ/モノ | ポリクローナル |
| アイソタイプ | IgG |

アプリケーション

Our [Abpromise guarantee](#) covers the use of **ab111103** in the following tested applications.

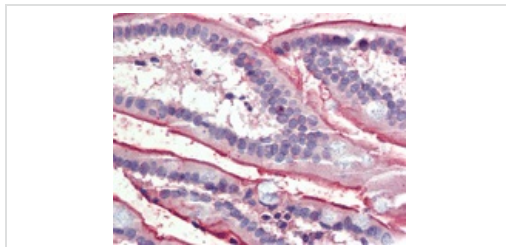
The application notes include recommended starting dilutions; optimal dilutions/concentrations should be determined by the end user.

| アプリケーション | Abreviews | 特記事項 |
|----------|-----------|---|
| IHC-P | | Use a concentration of 3.75 µg/ml. Perform heat mediated antigen retrieval with citrate buffer pH 6 before commencing with IHC staining protocol. |

ターゲット情報

| | |
|-------|---|
| 機能 | Actively transports glucose into cells by Na(+) cotransport with a Na(+) to glucose coupling ratio of 2:1. Efficient substrate transport in mammalian kidney is provided by the concerted action of a low affinity high capacity and a high affinity low capacity Na(+)/glucose cotransporter arranged in series along kidney proximal tubules. |
| 組織特異性 | Expressed mainly in intestine and kidney. |
| 関連疾患 | Congenital glucose/galactose malabsorption |
| 配列類似性 | Belongs to the sodium:solute symporter (SSF) (TC 2.A.21) family. |
| 翻訳後修飾 | N-glycosylation is not necessary for the cotransporter function. |
| 細胞内局在 | Membrane. |

画像



ab111103, at 3.75µg/ml, staining SGLT1 in formalin-fixed, paraffin-embedded Human small intestine tissue by Immunohistochemistry.

Immunohistochemistry (Formalin/PFA-fixed paraffin-embedded sections) - Anti-SGLT1 antibody (ab111103)

Please note: All products are "FOR RESEARCH USE ONLY AND ARE NOT INTENDED FOR DIAGNOSTIC OR THERAPEUTIC USE"

Our Abpromise to you: Quality guaranteed and expert technical support

- Replacement or refund for products not performing as stated on the datasheet
- Valid for 12 months from date of delivery
- Response to your inquiry within 24 hours
- We provide support in Chinese, English, French, German, Japanese and Spanish
- Extensive multi-media technical resources to help you
- We investigate all quality concerns to ensure our products perform to the highest standards

If the product does not perform as described on this datasheet, we will offer a refund or replacement. For full details of the Abpromise, please visit <https://www.abcam.co.jp/abpromise> or contact our technical team.

Terms and conditions

- Guarantee only valid for products bought direct from Abcam or one of our authorized distributors