


Product datasheet

Anti-SHC3 antibody ab110973

画像数 1

製品の概要

| | |
|--------------|---|
| 製品名 | Anti-SHC3 antibody |
| 製品の詳細 | Rabbit polyclonal to SHC3 |
| 由来種 | Rabbit |
| アプリケーション | 適用あり: IHC-P |
| 種交差性 | 交差種: Human 交差が予測される動物種: Mouse, Rat  |
| 免疫原 | Synthetic peptide from an internal sequence of Human SHC3 protein (Q92529). |
| ポジティブ・コントロール | Human lung carcinoma tissue. |

製品の特性

| | |
|----------|---|
| 製品の状態 | Liquid |
| 保存方法 | Shipped at 4°C. Store at -20°C. Stable for 12 months at -20°C. |
| バッファー | pH: 7.40 Preservative: 0.02% Sodium azide Constituents: PBS, 50% Glycerol, 0.88% Sodium chloride Note: PBS without calcium and magnesium |
| 精製度 | Immunogen affinity purified |
| 特記事項(精製) | Affinity-purified from rabbit antiserum by affinity-chromatography using epitope-specific immunogen. |
| ポリ/モノ | ポリクローナル |
| アイソタイプ | IgG |

アプリケーション

Our [Abpromise guarantee](#) covers the use of **ab110973** in the following tested applications.

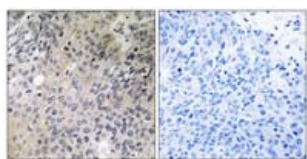
The application notes include recommended starting dilutions; optimal dilutions/concentrations should be determined by the end user.

| アプリケーション | Abreviews | 特記事項 |
|----------|-----------|--|
| IHC-P | | 1/50 - 1/100. Perform heat mediated antigen retrieval with citrate buffer pH 6 before commencing with IHC staining protocol. |

ターゲット情報

| | |
|-------|---|
| 機能 | Signaling adapter that couples activated growth factor receptors to signaling pathway in neurons. Involved in the signal transduction pathways of neurotrophin-activated Trk receptors in cortical neurons. |
| 組織特異性 | Mainly expressed in brain. Hardly detectable in other tissues, except in pancreas. Highly expressed in the cerebral cortex, frontal and temporal lobes, occipital pole, hippocampus, caudate nucleus and amygdala. Expressed at low level in the cerebellum, medulla and spinal cord. |
| 配列類似性 | Contains 1 PID domain. Contains 1 SH2 domain. |
| 翻訳後修飾 | Tyrosine phosphorylated. |

画像



Immunohistochemistry (Formalin/PFA-fixed paraffin-embedded sections) - Anti-SHC3 antibody (ab110973)

Immunohistochemistry analysis of paraffin-embedded human lung tissue using SHC3 antibody (ab110973). On the left without blocking peptide and on the right with blocking peptide.

Please note: All products are "FOR RESEARCH USE ONLY AND ARE NOT INTENDED FOR DIAGNOSTIC OR THERAPEUTIC USE"

Our Abpromise to you: Quality guaranteed and expert technical support

- Replacement or refund for products not performing as stated on the datasheet
- Valid for 12 months from date of delivery
- Response to your inquiry within 24 hours
- We provide support in Chinese, English, French, German, Japanese and Spanish
- Extensive multi-media technical resources to help you
- We investigate all quality concerns to ensure our products perform to the highest standards

If the product does not perform as described on this datasheet, we will offer a refund or replacement. For full details of the Abpromise, please visit <https://www.abcam.co.jp/abpromise> or contact our technical team.

Terms and conditions

- Guarantee only valid for products bought direct from Abcam or one of our authorized distributors