

Product datasheet

Anti-CHST13 antibody ab110762

画像数 2

製品の概要

製品名	Anti-CHST13 antibody
製品の詳細	Rabbit polyclonal to CHST13
由来種	Rabbit
アプリケーション	適用あり: WB, IHC-P
種交差性	交差種: Human
免疫原	Synthetic peptide derived from internal sequence of Human CHST13.
ポジティブ・コントロール	Human testis tissue; Extracts from K562 cells

製品の特性

製品の状態	Liquid
保存方法	Shipped at 4°C. Store at -20°C. Stable for 12 months at -20°C.
バッファー	pH: 7.40 Preservative: 0.02% Sodium azide Constituents: PBS, 0.88% Sodium chloride, 50% Glycerol
精製度	Immunogen affinity purified
ポリ/モノ	ポリクローナル
アイソタイプ	IgG

アプリケーション

Our [Abpromise guarantee](#) covers the use of **ab110762** in the following tested applications.

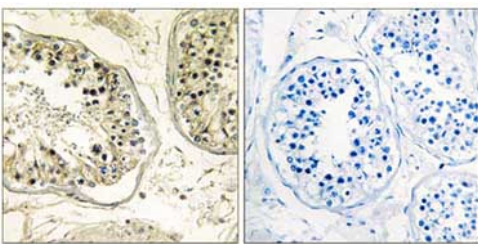
The application notes include recommended starting dilutions; optimal dilutions/concentrations should be determined by the end user.

アプリケーション	Abreviews	特記事項
WB		1/500 - 1/1000. Predicted molecular weight: 39 kDa.
IHC-P		1/50 - 1/100. Perform heat mediated antigen retrieval with citrate buffer pH 6 before commencing with IHC staining protocol.

## ターゲット情報

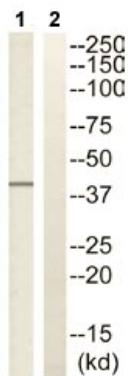
<b>機能</b>	Catalyzes the transfer of sulfate to position 4 of the N-acetylgalactosamine (GalNAc) residue of chondroitin. Chondroitin sulfate constitutes the predominant proteoglycan present in cartilage and is distributed on the surfaces of many cells and extracellular matrices. Transfers sulfate to the C4 hydroxyl of beta 1,4-linked GalNAc that is substituted with a beta-linked glucuronic acid at the C-3 hydroxyl. No activity toward dermatan.
<b>組織特異性</b>	Highly expressed in adult liver. Expressed at lower level in kidney, lymph nodes and fetal kidney.
<b>配列類似性</b>	Belongs to the sulfotransferase 2 family.
<b>細胞内局在</b>	Golgi apparatus membrane.

## 画像



ab110762, at 1/50 dilution, staining CHST13 in paraffin-embedded Human testis tissue by Immunohistochemistry, in the presence (right panel) or absence (left panel) of immunising peptide.

Immunohistochemistry (Formalin/PFA-fixed paraffin-embedded sections) - Anti-CHST13 antibody (ab110762)



**All lanes :** Anti-CHST13 antibody (ab110762) at 1/500 dilution

**Lane 1 :** Extracts from K562 cells

**Lane 2 :** Extracts from K562 cells with immunising peptide at 10 µg

Lysates/proteins at 30 µg per lane.

**Predicted band size:** 39 kDa

Western blot - Anti-CHST13 antibody (ab110762)

**Please note:** All products are "FOR RESEARCH USE ONLY AND ARE NOT INTENDED FOR DIAGNOSTIC OR THERAPEUTIC USE"

## Our Abpromise to you: Quality guaranteed and expert technical support

- Replacement or refund for products not performing as stated on the datasheet
- Valid for 12 months from date of delivery
- Response to your inquiry within 24 hours
- We provide support in Chinese, English, French, German, Japanese and Spanish

- Extensive multi-media technical resources to help you
- We investigate all quality concerns to ensure our products perform to the highest standards

If the product does not perform as described on this datasheet, we will offer a refund or replacement. For full details of the Abpromise, please visit <https://www.abcam.co.jp/abpromise> or contact our technical team.

### **Terms and conditions**

---

- Guarantee only valid for products bought direct from Abcam or one of our authorized distributors