

Product datasheet

Anti-ETS1 antibody [EPR546(2)] ab109212

リコンビナント RabMAb®

3 References 画像数 2

製品の概要

製品名	Anti-ETS1 antibody [EPR546(2)]
製品の詳細	Rabbit monoclonal [EPR546(2)] to ETS1
由来種	Rabbit
アプリケーション	適用あり: WB, Flow Cyt 適用なし: ICC,IHC-P or IP
種交差性	交差種: Mouse, Human
免疫原	Synthetic peptide corresponding to residues in Human ETS1.
ポジティブ・コントロール	<div style="border: 1px solid #ccc; padding: 5px; display: inline-block;"> ウェスタン・プロット用ポジティブコントロール Recombinant Human ETS1 protein > </div> MCF-7, Daudi, Molt-4, PBMC, HepG2, Jurkat and Saos-2 cell lysates
特記事項	<p>Rat: We have preliminary internal testing data to indicate this antibody may not react with this species. Please contact us for more information.</p> <p>Our RabMAb® technology is a patented hybridoma-based technology for making rabbit monoclonal antibodies. For details on our patents, please refer to RabMAb® patents</p> <p>This product is a recombinant rabbit monoclonal antibody.</p>

製品の特性

製品の状態	Liquid
保存方法	Shipped at 4°C. Store at -20°C. Stable for 12 months at -20°C.
バッファー	PBS 49%,Sodium azide 0.01%,Glycerol 50%,BSA 0.05%
精製度	Tissue culture supernatant
ポリ/モノ	モノクローナル
クローン名	EPR546(2)
アイソタイプ	IgG

アプリケーション

Our [Abpromise guarantee](#) covers the use of **ab109212** in the following tested applications.

The application notes include recommended starting dilutions; optimal dilutions/concentrations should be determined by the end user.

アプリケーション	Abreviews	特記事項
WB		1/1000 - 1/10000. Detects a band of approximately 46 kDa (predicted molecular weight: 50 kDa).
Flow Cyt		1/100 - 1/1000. ab172730 - Rabbit monoclonal IgG, is suitable for use as an isotype control with this antibody.

追加情報

Is unsuitable for ICC,IHC-P or IP.

ターゲット情報

機能

Transcription factor.

配列類似性

Belongs to the ETS family.
Contains 1 ETS DNA-binding domain.
Contains 1 PNT (pointed) domain.

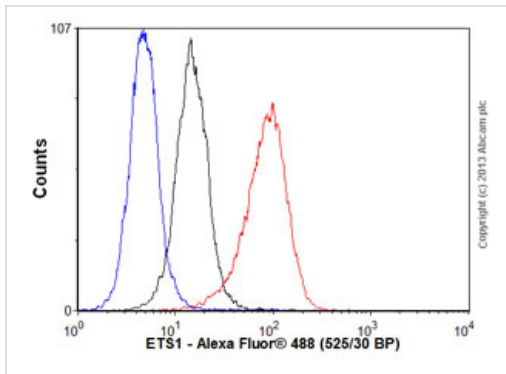
翻訳後修飾

Sumoylated on Lys-15 and Lys-227, preferentially by SUMO2; which inhibits transcriptional activity.
Ubiquitinated; which induces proteasomal degradation.

細胞内局在

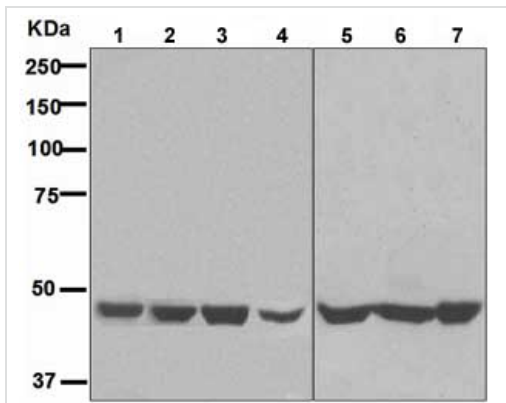
Nucleus.

画像



Flow Cytometry - Anti-ETS1 antibody [EPR546(2)]
(ab109212)

Overlay histogram showing Jurkat cells stained with ab109212 (red line). The cells were fixed with 80% methanol (5 min) and then permeabilized with 0.1% PBS-Tween for 20 min. The cells were then incubated in 1x PBS / 10% normal goat serum / 0.3M glycine to block non-specific protein-protein interactions followed by the antibody (ab109212, 1/1000 dilution) for 30 min at 22°C. The secondary antibody used was Alexa Fluor® 488 goat anti-rabbit IgG (H&L) (ab150077) at 1/2000 dilution for 30 min at 22°C. Isotype control antibody (black line) was rabbit IgG (monoclonal) (0.1µg/1x10⁶ cells) used under the same conditions. Unlabelled sample (blue line) was also used as a control. Acquisition of >5,000 events were collected using a 20mW Argon ion laser (488nm) and 525/30 bandpass filter. This antibody gave a positive signal in Jurkat cells fixed with 4% paraformaldehyde (10 min)/permeabilized with 0.1% PBS-Tween for 20 min used under the same conditions.



Western blot - Anti-ETS1 antibody [EPR546(2)]
(ab109212)

All lanes : Anti-ETS1 antibody [EPR546(2)]
(ab109212) at 1/1000 dilution

Lane 1 : MCF-7 cell lysate

Lane 2 : Daudi cell lysate

Lane 3 : Molt-4 cell lysate

Lane 4 : PBMC lysate

Lane 5 : HepG2 cell lysate

Lane 6 : Jurkat cell lysate

Lane 7 : Saos-2 cell lysate

Lysates/proteins at 10 µg per lane.

Predicted band size: 50 kDa

Please note: All products are "FOR RESEARCH USE ONLY AND ARE NOT INTENDED FOR DIAGNOSTIC OR THERAPEUTIC USE"

Our Abpromise to you: Quality guaranteed and expert technical support

- Replacement or refund for products not performing as stated on the datasheet
- Valid for 12 months from date of delivery
- Response to your inquiry within 24 hours

- We provide support in Chinese, English, French, German, Japanese and Spanish
- Extensive multi-media technical resources to help you
- We investigate all quality concerns to ensure our products perform to the highest standards

If the product does not perform as described on this datasheet, we will offer a refund or replacement. For full details of the Abpromise, please visit <https://www.abcam.co.jp/abpromise> or contact our technical team.

Terms and conditions

- Guarantee only valid for products bought direct from Abcam or one of our authorized distributors