

## Product datasheet

# Anti-RG1 antibody ab107367

### 画像数 1

#### 製品の概要

製品名	Anti-RG1 antibody
製品の詳細	Rabbit polyclonal to RG1
由来種	Rabbit
アプリケーション	適用あり: WB
種交差性	交差種: Human
免疫原	Synthetic peptide conjugated to KLH, corresponding to internal sequence amino acids 757-786 of Human PPP1R3A (NP_002702.2).
ポジティブ・コントロール	Jurkat cell line lysates

#### 製品の特性

製品の状態	Liquid
保存方法	Shipped at 4°C. Store at 4°C (up to 6 months). Store at -20°C long term.
バッファー	Preservative: 0.09% Sodium azide Constituent: PBS
精製度	Immunogen affinity purified
特記事項 (精製)	This antibody is purified through a protein A column, followed by peptide affinity purification.
ポリ/モノ	ポリクローナル
アイソタイプ	IgG

#### アプリケーション

Our [Abpromise guarantee](#) covers the use of **ab107367** in the following tested applications.

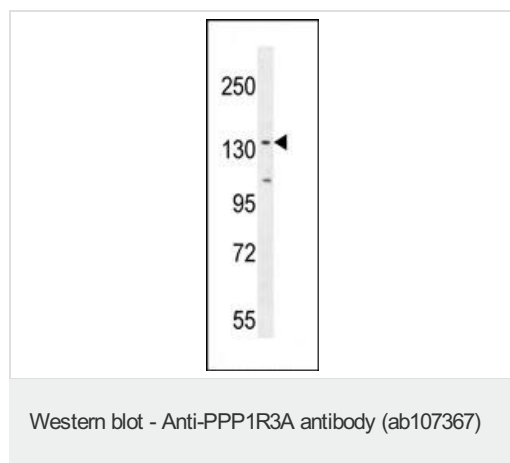
The application notes include recommended starting dilutions; optimal dilutions/concentrations should be determined by the end user.

アプリケーション	Abreviews	特記事項
WB		1/100 - 1/500. Predicted molecular weight: 126 kDa.

#### ターゲット情報

機能	Seems to act as a glycogen-targeting subunit for PP1. PP1 is essential for cell division, and participates in the regulation of glycogen metabolism, muscle contractility and protein synthesis. Plays an important role in glycogen synthesis but is not essential for insulin activation of glycogen synthase.
組織特異性	Skeletal muscle and heart.
関連疾患	Diabetes mellitus, non-insulin-dependent
配列類似性	Contains 1 CBM21 (carbohydrate binding type-21) domain.
ドメイン	The CBM21 domain is known to be involved in the localization to glycogen and is characteristic of some regulatory subunit of phosphatase complexes.
翻訳後修飾	Phosphorylation at Ser-46 by ISPK stimulates the dephosphorylation of glycogen synthase and phosphorylase kinase.
細胞内局在	Membrane.

## 画像



Anti-RG1 antibody (ab107367) at 1/100 dilution + Jurkat cell line lysates at 35 µg

**Predicted band size:** 126 kDa

**Please note:** All products are "FOR RESEARCH USE ONLY AND ARE NOT INTENDED FOR DIAGNOSTIC OR THERAPEUTIC USE"

## Our Abpromise to you: Quality guaranteed and expert technical support

- Replacement or refund for products not performing as stated on the datasheet
- Valid for 12 months from date of delivery
- Response to your inquiry within 24 hours
- We provide support in Chinese, English, French, German, Japanese and Spanish
- Extensive multi-media technical resources to help you
- We investigate all quality concerns to ensure our products perform to the highest standards

If the product does not perform as described on this datasheet, we will offer a refund or replacement. For full details of the Abpromise, please visit <https://www.abcam.co.jp/abpromise> or contact our technical team.

## Terms and conditions

- Guarantee only valid for products bought direct from Abcam or one of our authorized distributors