

Product datasheet

Anti-Apc6 antibody ab106495

画像数 3

製品の概要

製品名	Anti-Apc6 antibody
製品の詳細	Rabbit polyclonal to Apc6
由来種	Rabbit
特異性	ab106495 is predicted not to cross-react with other APC family members.
アプリケーション	適用あり: ICC/IF, WB, IHC-P
種交差性	交差種: Mouse, Human
免疫原	An 18 amino acid synthetic peptide near the N terminus of Human Apc6 (NP_003894).
ポジティブ・コントロール	Human liver tissue and lysate

製品の特性

製品の状態	Liquid
保存方法	Shipped at 4°C. Store at 4°C (stable for up to 12 months).
バッファー	Preservative: 0.02% Sodium azide Constituent: PBS
精製度	Immunogen affinity purified
ポリ/モノ	ポリクローナル
アイソタイプ	IgG

アプリケーション

Our [Abpromise guarantee](#) covers the use of **ab106495** in the following tested applications.

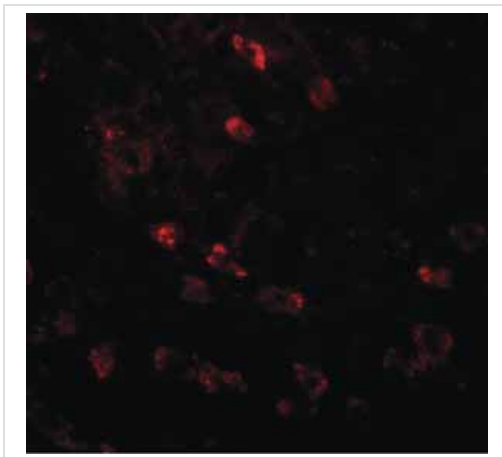
The application notes include recommended starting dilutions; optimal dilutions/concentrations should be determined by the end user.

アプリケーション	Abreviews	特記事項
ICC/IF		Use a concentration of 20 µg/ml.
WB		Use a concentration of 1 - 2 µg/ml. Predicted molecular weight: 72 kDa.
IHC-P		Use at an assay dependent concentration.

ターゲット情報

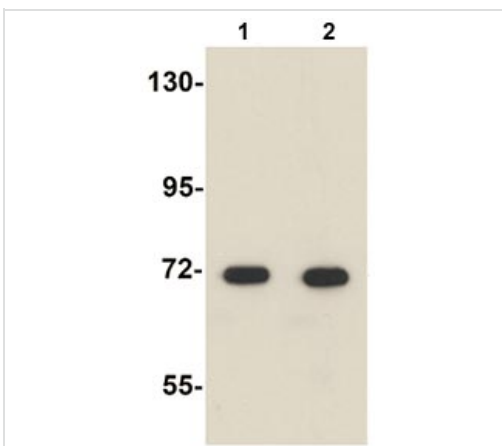
機能	Component of the anaphase promoting complex/cyclosome (APC/C), a cell cycle-regulated E3 ubiquitin ligase that controls progression through mitosis and the G1 phase of the cell cycle. The APC/C complex acts by mediating ubiquitination and subsequent degradation of target proteins: it mainly mediates the formation of 'Lys-11'-linked polyubiquitin chains and, to a lower extent, the formation of 'Lys-48'- and 'Lys-63'-linked polyubiquitin chains.
パスウェイ	Protein modification; protein ubiquitination.
配列類似性	Belongs to the APC6/CDC16 family. Contains 7 TPR repeats.
翻訳後修飾	Phosphorylated. Phosphorylation on Ser-560 occurs specifically during mitosis.
細胞内局在	Cytoplasm > cytoskeleton > centrosome. Cytoplasm > cytoskeleton > spindle. Colocalizes with CDC27 to the centrosome at all stages of the cell cycle and to the mitotic spindle.

画像



Immunofluorescence of Apc6 in Human liver tissue with ab106495 at 20 ug/mL.

Immunocytochemistry/ Immunofluorescence - Anti-Apc6 antibody (ab106495)



Lane 1 : Anti-Apc6 antibody (ab106495) at 1 µg/ml

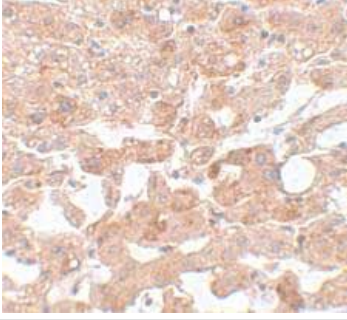
Lane 2 : Anti-Apc6 antibody (ab106495) at 2 µg/ml

All lanes : Human liver tissue lysate

Lysates/proteins at 15 µg per lane.

Predicted band size: 72 kDa

Western blot - Anti-Apc6 antibody (ab106495)



ab106495, at 5 µg/ml, staining Apc6 in Human liver tissue by Immunohistochemistry.

Immunohistochemistry (Formalin/PFA-fixed paraffin-embedded sections) - Anti-Apc6 antibody (ab106495)

Please note: All products are "FOR RESEARCH USE ONLY AND ARE NOT INTENDED FOR DIAGNOSTIC OR THERAPEUTIC USE"

Our Abpromise to you: Quality guaranteed and expert technical support

- Replacement or refund for products not performing as stated on the datasheet
- Valid for 12 months from date of delivery
- Response to your inquiry within 24 hours
- We provide support in Chinese, English, French, German, Japanese and Spanish
- Extensive multi-media technical resources to help you
- We investigate all quality concerns to ensure our products perform to the highest standards

If the product does not perform as described on this datasheet, we will offer a refund or replacement. For full details of the Abpromise, please visit <https://www.abcam.co.jp/abpromise> or contact our technical team.

Terms and conditions

- Guarantee only valid for products bought direct from Abcam or one of our authorized distributors