

Product datasheet

Anti-LMX1A antibody ab105882

画像数 1

製品の概要

製品名	Anti-LMX1A antibody
製品の詳細	Rabbit polyclonal to LMX1A
由来種	Rabbit
アプリケーション	適用あり: WB
種交差性	交差種: Mouse 交差が予測される動物種: Rat, Rabbit, Horse, Chicken, Guinea pig, Cow, Cat, Dog
免疫原	Synthetic peptide corresponding to a region within internal sequence amino acids 251 - 300 (KKLARRQQQQ QDQQTQRL TSAQTNGSGN AGMEGIMNPY TTLPTPQQLL) of Mouse LMX1A (NP_387501). Run BLAST with ExPASy Run BLAST with NCBI
ポジティブ・コントロール	Mouse small intestine lysate

製品の特性

製品の状態	Liquid
保存方法	Shipped at 4°C. Upon delivery aliquot and store at -20°C. Avoid repeated freeze / thaw cycles.
バッファー	Preservative: None Constituents: 2% Sucrose, PBS
精製度	Immunogen affinity purified
ポリ/モノ	ポリクローナル
アイソタイプ	IgG

アプリケーション

Our [Abpromise guarantee](#) covers the use of **ab105882** in the following tested applications.

The application notes include recommended starting dilutions; optimal dilutions/concentrations should be determined by the end user.

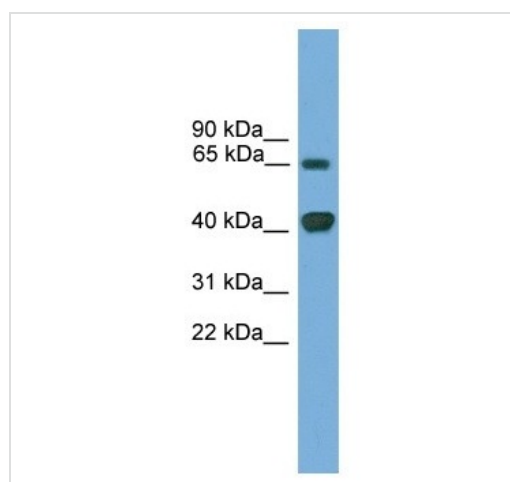
アプリケーション	Abreviews	特記事項
----------	-----------	------

アプリケーション	Abreviews	特記事項
WB		Use a concentration of 1 µg/ml. Predicted molecular weight: 43 kDa. Good results were obtained when blocked with 5% non-fat dry milk in 0.05% PBS-T.

ターゲット情報

機能	Acts as a transcriptional activator by binding to an A/T-rich sequence, the FLAT element, in the insulin gene promoter. Required for development of the roof plate and, in turn, for specification of dorsal cell fates in the CNS and developing vertebrae.
組織特異性	Isoform 1 is expressed in many tissues. Not found in heart, liver, spleen and testis. Relatively highly expressed in fetal brain. Isoform LMX1A-4B is expressed in testis.
配列類似性	Contains 1 homeobox DNA-binding domain. Contains 2 LIM zinc-binding domains.
細胞内局在	Nucleus.

画像



Western blot - Anti-LMX1A antibody (ab105882)

Anti-LMX1A antibody (ab105882) at 1 µg/ml +
Mouse small intestine lysate at 10 µg

Predicted band size: 43 kDa

Gel concentration: 12%

Please note: All products are "FOR RESEARCH USE ONLY AND ARE NOT INTENDED FOR DIAGNOSTIC OR THERAPEUTIC USE"

Our Abpromise to you: Quality guaranteed and expert technical support

- Replacement or refund for products not performing as stated on the datasheet
- Valid for 12 months from date of delivery
- Response to your inquiry within 24 hours
- We provide support in Chinese, English, French, German, Japanese and Spanish
- Extensive multi-media technical resources to help you
- We investigate all quality concerns to ensure our products perform to the highest standards

If the product does not perform as described on this datasheet, we will offer a refund or replacement. For full details of the Abpromise, please visit <https://www.abcam.co.jp/abpromise> or contact our technical team.

Terms and conditions

- Guarantee only valid for products bought direct from Abcam or one of our authorized distributors