


Product datasheet

Anti-Metabotropic Glutamate Receptor 1 antibody ab105212

画像数 3

製品の概要

製品名	Anti-Metabotropic Glutamate Receptor 1 antibody
製品の詳細	Rabbit polyclonal to Metabotropic Glutamate Receptor 1
由来種	Rabbit
アプリケーション	適用あり: IHC-P
種交差性	交差種: Human 交差が予測される動物種: Mouse, Rat, Chicken, Monkey 
免疫原	Synthetic peptide from the C terminus of Human Metabotropic Glutamate Receptor 1.
ポジティブ・コントロール	Human brain, kidney and prostate.

製品の特性

製品の状態	Liquid
保存方法	Shipped at 4°C. Store at +4°C short term (1-2 weeks). Store at -20°C or -80°C. Avoid freeze / thaw cycle.
バッファー	pH: 7.60 Preservative: 0.1% Sodium azide Constituents: 1% BSA, PBS
精製度	Immunogen affinity purified
ポリ/モノ	ポリクローナル
アイソタイプ	IgG

アプリケーション

Our [Abpromise guarantee](#) covers the use of **ab105212** in the following tested applications.

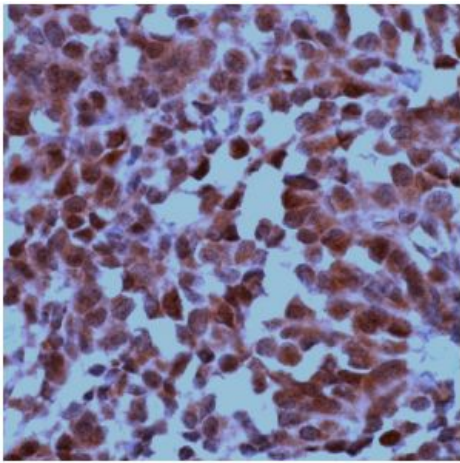
The application notes include recommended starting dilutions; optimal dilutions/concentrations should be determined by the end user.

アプリケーション	Abreviews	特記事項
IHC-P		Use a concentration of 15 µg/ml. Perform heat mediated antigen retrieval with citrate buffer pH 6 before commencing with IHC staining protocol.

ターゲット情報

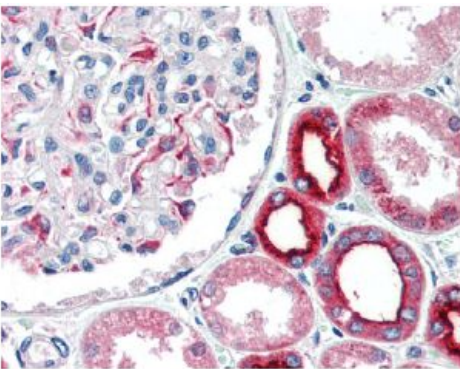
機能	Receptor for glutamate. The activity of this receptor is mediated by a G-protein that activates a phosphatidylinositol-calcium second messenger system. May participate in the central action of glutamate in the CNS, such as long-term potentiation in the hippocampus and long-term depression in the cerebellum.
配列類似性	Belongs to the G-protein coupled receptor 3 family.
細胞内局在	Cell membrane.

画像



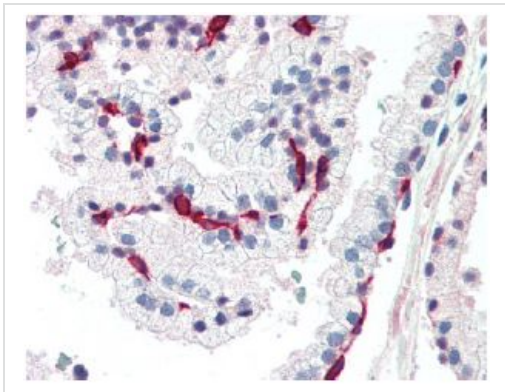
ab105212 at 15 µg/ml staining Metabotropic Glutamate Receptor 1 in Human brain by Immunohistochemistry (Formalin/PFA-fixed paraffin-embedded sections). Detection utilised biotinylated goat anti-rabbit IgG secondary antibody, alkaline phosphatase-streptavidin and chromogen.

Immunohistochemistry (Formalin/PFA-fixed paraffin-embedded sections) - Anti-Metabotropic Glutamate Receptor 1 antibody (ab105212)



ab105212 at 15 µg/ml staining Metabotropic Glutamate Receptor 1 in Human kidney by Immunohistochemistry (Formalin/PFA-fixed paraffin-embedded sections). Detection utilised biotinylated goat anti-rabbit IgG secondary antibody, alkaline phosphatase-streptavidin and chromogen.

Immunohistochemistry (Formalin/PFA-fixed paraffin-embedded sections) - Anti-Metabotropic Glutamate Receptor 1 antibody (ab105212)



ab105212 at 15 µg/ml staining Metabotropic Glutamate Receptor 1 in Human prostate by Immunohistochemistry (Formalin/PFA-fixed paraffin-embedded sections). Detection utilised biotinylated goat anti-rabbit IgG secondary antibody, alkaline phosphatase-streptavidin and chromogen.

Immunohistochemistry (Formalin/PFA-fixed paraffin-embedded sections) - Anti-Metabotropic Glutamate Receptor 1 antibody (ab105212)

Please note: All products are "FOR RESEARCH USE ONLY AND ARE NOT INTENDED FOR DIAGNOSTIC OR THERAPEUTIC USE"

Our Abpromise to you: Quality guaranteed and expert technical support

- Replacement or refund for products not performing as stated on the datasheet
- Valid for 12 months from date of delivery
- Response to your inquiry within 24 hours
- We provide support in Chinese, English, French, German, Japanese and Spanish
- Extensive multi-media technical resources to help you
- We investigate all quality concerns to ensure our products perform to the highest standards

If the product does not perform as described on this datasheet, we will offer a refund or replacement. For full details of the Abpromise, please visit <https://www.abcam.co.jp/abpromise> or contact our technical team.

Terms and conditions

- Guarantee only valid for products bought direct from Abcam or one of our authorized distributors