

Product datasheet

Anti-Thyrotropin Releasing Hormone (TRH) antibody ab104730

画像数 1

製品の概要

製品名	Anti-Thyrotropin Releasing Hormone (TRH) antibody
製品の詳細	Rabbit polyclonal to Thyrotropin Releasing Hormone (TRH)
由来種	Rabbit
アプリケーション	適用あり: WB
種交差性	交差種: Human 交差が予測される動物種: Cow, Dog, Zebrafish
免疫原	Synthetic peptide corresponding to a region within C terminal amino acids 191-240 (RALGGPCGPQ GAYGQAGLLL GLLDDLSRSQ GAEEKRQHPG RRAAWVREPL) of Human Thyrotropin Releasing Hormone (TRH) (NP_009048). Run BLAST with ExPASy Run BLAST with NCBI
ポジティブ・コントロール	Thyrotropin Releasing Hormone (TRH) transfected 293T cell lysate

製品の特性

製品の状態	Liquid
保存方法	Shipped at 4°C. Upon delivery aliquot and store at -20°C. Avoid repeated freeze / thaw cycles.
バッファー	Preservative: 0.09% Sodium azide Constituents: 2% Sucrose, PBS
精製度	Immunogen affinity purified
ポリ/モノ	ポリクローナル
アイソタイプ	IgG

アプリケーション

Our [Abpromise guarantee](#) covers the use of **ab104730** in the following tested applications.

The application notes include recommended starting dilutions; optimal dilutions/concentrations should be determined by the end user.

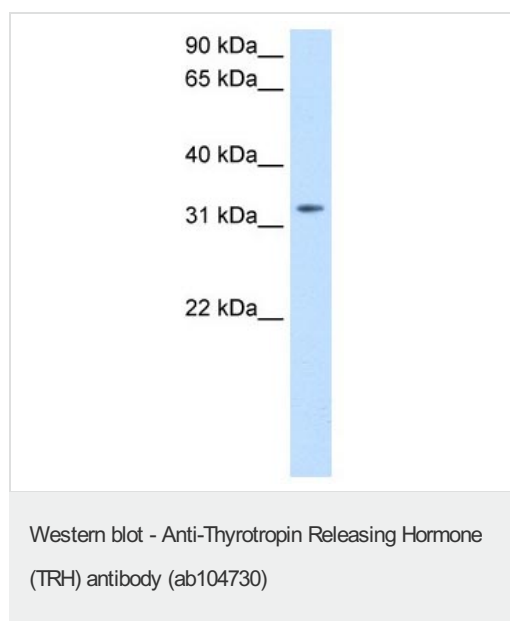
アプリケーション	Abreviews	特記事項

アプリケーション	Abreviews	特記事項
WB		Use a concentration of 0.5 µg/ml. Predicted molecular weight: 27 kDa. Good results were obtained when blocked with 5% non-fat dry milk in 0.05% PBS-T.

ターゲット情報

関連性	Thyrotropin releasing hormone (TRH) is a tripeptide hormone that stimulates the release of thyroid stimulating hormone and prolactin by the anterior pituitary. TRH is produced by the hypothalamus and travels across the median eminence to the pituitary via the hypophyseal portal system. In addition to the brain, TRH can also be detected in other areas of the body including the gastrointestinal system and pancreatic islets.
細胞内局在	Secreted

画像



Anti-Thyrotropin Releasing Hormone (TRH) antibody (ab104730) at 0.5 µg/ml + Thyrotropin Releasing Hormone (TRH) transfected 293T cell lysate at 10 µg

Predicted band size: 27 kDa

Gel concentration: 12%

Please note: All products are "FOR RESEARCH USE ONLY AND ARE NOT INTENDED FOR DIAGNOSTIC OR THERAPEUTIC USE"

Our Abpromise to you: Quality guaranteed and expert technical support

- Replacement or refund for products not performing as stated on the datasheet
- Valid for 12 months from date of delivery
- Response to your inquiry within 24 hours
- We provide support in Chinese, English, French, German, Japanese and Spanish
- Extensive multi-media technical resources to help you
- We investigate all quality concerns to ensure our products perform to the highest standards

If the product does not perform as described on this datasheet, we will offer a refund or replacement. For full details of the Abpromise,

please visit <https://www.abcam.co.jp/abpromise> or contact our technical team.

Terms and conditions

- Guarantee only valid for products bought direct from Abcam or one of our authorized distributors