

Product datasheet

Anti-DDHD2 antibody ab103965

1 References [画像数 1](#)

製品の概要

|              |  |
|--------------|--|
| 製品名          | Anti-DDHD2 antibody  |
| 製品の詳細        | Rabbit polyclonal to DDHD2   |
| 由来種          | Rabbit   |
| アプリケーション     | 適用あり: WB   |
| 種交差性         | 交差種: Human   |
| 免疫原          | Synthetic peptide corresponding to a region within N terminal amino acids 110-140 of Human DDHD2, conjugated to KLH. |
| ポジティブ・コントロール | K562 cell line lysates   |

製品の特性

|           |   |
|-----------|---|
| 製品の状態     | Liquid  |
| 保存方法      | Shipped at 4°C. Store at 4°C (up to 6 months). Store at -20°C long term.                    |
| バッファー     | Preservative: 0.09% Sodium azide<br>Constituent: PBS  |
| 精製度       | Immunogen affinity purified   |
| 特記事項 (精製) | ab103965 is purified through a protein A column, followed by peptide affinity purification. |
| ポリ/モノ     | ポリクローナル   |
| アイソタイプ    | IgG   |

アプリケーション

Our [Abpromise guarantee](#) covers the use of **ab103965** in the following tested applications.

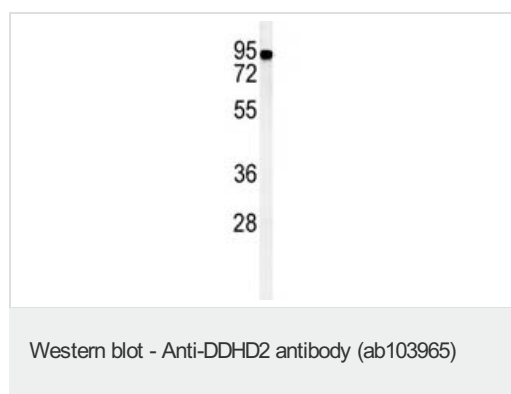
The application notes include recommended starting dilutions; optimal dilutions/concentrations should be determined by the end user.

| アプリケーション | Abreviews | 特記事項   |
|----------|-----------|--|
| WB       |           | 1/100 - 1/500. Predicted molecular weight: 81 kDa. |

ターゲット情報

|       |   |
|-------|---|
| 機能    | Phospholipase that hydrolyzes preferentially phosphatidic acid and phosphatidylethanolamine. May be involved in the maintenance of the endoplasmic reticulum and/or Golgi structures. |
| 組織特異性 | Ubiquitously expressed (at protein level).  |
| 配列類似性 | Belongs to the PA-PLA1 family.<br>Contains 1 DDHD domain.<br>Contains 1 SAM (sterile alpha motif) domain.<br>Contains 1 WWE domain.   |
| 細胞内局在 | Cytoplasm. Cytoplasmic granule.   |

## 画像



Anti-DDHD2 antibody (ab103965) at 1/100 dilution + K562 cell line lysates at 35 µg

**Predicted band size:** 81 kDa

**Please note:** All products are "FOR RESEARCH USE ONLY AND ARE NOT INTENDED FOR DIAGNOSTIC OR THERAPEUTIC USE"

## Our Abpromise to you: Quality guaranteed and expert technical support

- Replacement or refund for products not performing as stated on the datasheet
- Valid for 12 months from date of delivery
- Response to your inquiry within 24 hours
- We provide support in Chinese, English, French, German, Japanese and Spanish
- Extensive multi-media technical resources to help you
- We investigate all quality concerns to ensure our products perform to the highest standards

If the product does not perform as described on this datasheet, we will offer a refund or replacement. For full details of the Abpromise, please visit <https://www.abcam.co.jp/abpromise> or contact our technical team.

## Terms and conditions

- Guarantee only valid for products bought direct from Abcam or one of our authorized distributors