

## Product datasheet

# Anti-MDH1 antibody ab103811

### 画像数 2

#### 製品の概要

製品名	Anti-MDH1 antibody
製品の詳細	Rabbit polyclonal to MDH1
由来種	Rabbit
アプリケーション	適用あり: WB
種交差性	交差種: Human
免疫原	Full length protein, corresponding to amino acids 1-334 of Human MDH1 (NP_005908.1).
ポジティブ・コントロール	Human spleen. Transfected 293T cell line.

#### 製品の特性

製品の状態	Liquid
保存方法	Shipped at 4°C. Upon delivery aliquot. Store at -20°C or -80°C. Avoid freeze / thaw cycle.
バッファー	Preservative: None Constituents: 1X PBS, pH 7.2
精製度	Protein A purified
ポリ/モノ	ポリクローナル
アイソタイプ	IgG

#### アプリケーション

Our [Abpromise guarantee](#) covers the use of **ab103811** in the following tested applications.

The application notes include recommended starting dilutions; optimal dilutions/concentrations should be determined by the end user.

アプリケーション	Abreviews	特記事項
WB		Use a concentration of 1 - 5 µg/ml. Predicted molecular weight: 36 kDa.

#### ターゲット情報

配列類似性 Belongs to the LDH/MDH superfamily. MDH type 2 family.

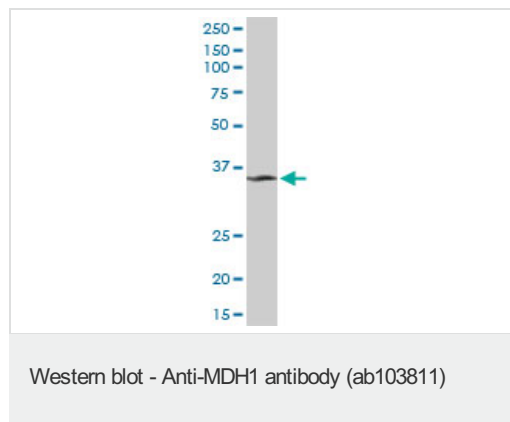
翻訳後修飾

ISGylated.

細胞内局在

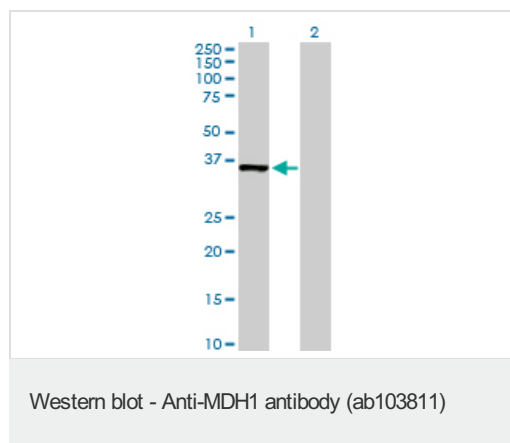
Cytoplasm.

## 画像



Anti-MDH1 antibody (ab103811) at 5 µg/ml +  
Human spleen tissue lysate at 50 µg

**Predicted band size:** 36 kDa



**All lanes :** Anti-MDH1 antibody (ab103811)  
at 5 µg/ml

**Lane 1 :** MDH1 transfected 293T cell lysate

**Lane 2 :** Non-transfected 293T cell lysate

Lysates/proteins at 25 µg per lane.

**Predicted band size:** 36 kDa

**Please note:** All products are "FOR RESEARCH USE ONLY AND ARE NOT INTENDED FOR DIAGNOSTIC OR THERAPEUTIC USE"

## Our Abpromise to you: Quality guaranteed and expert technical support

- Replacement or refund for products not performing as stated on the datasheet
- Valid for 12 months from date of delivery
- Response to your inquiry within 24 hours
- We provide support in Chinese, English, French, German, Japanese and Spanish
- Extensive multi-media technical resources to help you
- We investigate all quality concerns to ensure our products perform to the highest standards

If the product does not perform as described on this datasheet, we will offer a refund or replacement. For full details of the Abpromise, please visit <https://www.abcam.co.jp/abpromise> or contact our technical team.

## Terms and conditions

- Guarantee only valid for products bought direct from Abcam or one of our authorized distributors