

Product datasheet

Anti-ELAC2 antibody ab103793

画像数 2

製品の概要

製品名	Anti-ELAC2 antibody
製品の詳細	Rabbit polyclonal to ELAC2
由来種	Rabbit
アプリケーション	適用あり: WB
種交差性	交差種: Human
免疫原	Full length protein, corresponding to amino acids 1-826 of Human ELAC2 (NP_060597.3).
ポジティブ・コントロール	Human liver tissue lysate; ELAC2 transfected 293T cell line lysate

製品の特性

製品の状態	Liquid
保存方法	Shipped at 4°C. Upon delivery aliquot and store at -20°C. Avoid freeze / thaw cycles.
バッファー	Preservative: None Constituents: 1X PBS, pH 7.2
精製度	Protein A purified
ポリ/モノ	ポリクローナル
アイソタイプ	IgG

アプリケーション

Our [Abpromise guarantee](#) covers the use of **ab103793** in the following tested applications.

The application notes include recommended starting dilutions; optimal dilutions/concentrations should be determined by the end user.

アプリケーション	Abreviews	特記事項
WB		Use a concentration of 1 - 5 µg/ml. Predicted molecular weight: 92 kDa.

ターゲット情報

機能 Zinc phosphodiesterase, which displays some tRNA 3'-processing endonuclease activity.

Probably involved in tRNA maturation, by removing a 3'-trailer from precursor tRNA.

組織特異性

Widely expressed. Highly expressed in heart, placenta, liver, skeletal muscle, kidney, pancreas, testis and ovary. Weakly expressed in brain, lung, spleen, thymus, prostate, small intestine, colon and leukocytes.

関連疾患

Defects in ELAC2 may be a cause of susceptibility to prostate cancer (PC) [MIM:176807]. It is a malignancy originating in tissues of the prostate. Most prostate cancers are adenocarcinomas that develop in the acini of the prostatic ducts. Other rare histopathologic types of prostate cancer that occur in approximately 5% of patients include small cell carcinoma, mucinous carcinoma, prostatic ductal carcinoma, transitional cell carcinoma, squamous cell carcinoma, basal cell carcinoma, adenoid cystic carcinoma (basaloid), signet-ring cell carcinoma and neuroendocrine carcinoma.

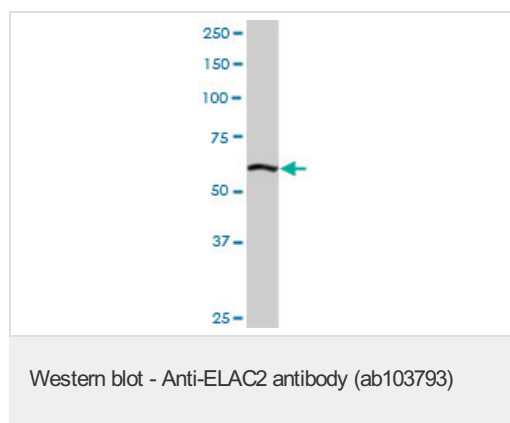
配列類似性

Belongs to the RNase Z family.

細胞内局在

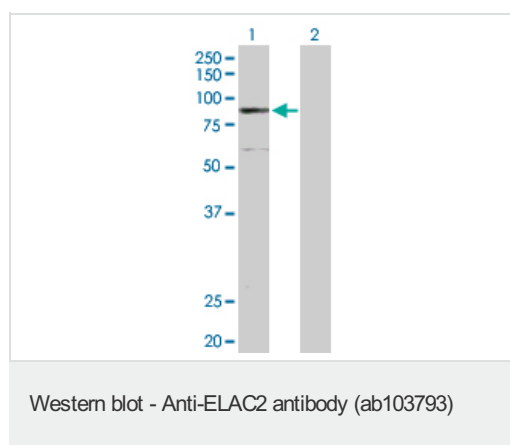
Nucleus.

画像



Anti-ELAC2 antibody (ab103793) at 5 μ g/ml +
Human liver tissue lysate at 50 μ g

Predicted band size: 92 kDa



All lanes : Anti-ELAC2 antibody (ab103793)
at 5 μ g/ml

Lane 1 : ELAC2 transfected 293T cell lysate

Lane 2 : 293T non-transfected cell lysate

Lysates/proteins at 25 μ g per lane.

Predicted band size: 92 kDa

Please note: All products are "FOR RESEARCH USE ONLY AND ARE NOT INTENDED FOR DIAGNOSTIC OR THERAPEUTIC USE"

Our Abpromise to you: Quality guaranteed and expert technical support

- Replacement or refund for products not performing as stated on the datasheet
- Valid for 12 months from date of delivery

- Response to your inquiry within 24 hours
- We provide support in Chinese, English, French, German, Japanese and Spanish
- Extensive multi-media technical resources to help you
- We investigate all quality concerns to ensure our products perform to the highest standards

If the product does not perform as described on this datasheet, we will offer a refund or replacement. For full details of the Abpromise, please visit <https://www.abcam.co.jp/abpromise> or contact our technical team.

Terms and conditions

- Guarantee only valid for products bought direct from Abcam or one of our authorized distributors