

Product datasheet

Anti-CFHR1 antibody ab103162

1 References [画像数 3](#)

製品の概要

製品名	Anti-CFHR1 antibody
製品の詳細	Rabbit polyclonal to CFHR1
由来種	Rabbit
アプリケーション	適用あり: WB
種交差性	交差種: Human
免疫原	Full length Human CFHL1 (NP_002104.2; amino acids 1-330).
ポジティブ・コントロール	Human liver lysate, HeLa cell lysate; CFHL1 transfected 293T cell lysate

製品の特性

製品の状態	Liquid
保存方法	Shipped at 4°C. Upon delivery aliquot. Store at -20°C or -80°C. Avoid freeze / thaw cycle.
バッファー	Preservative: None Constituents: 1X PBS, pH 7.2
精製度	Protein A purified
ポリ/モノ	ポリクローナル
アイソタイプ	IgG

アプリケーション

Our [Abpromise guarantee](#) covers the use of **ab103162** in the following tested applications.

The application notes include recommended starting dilutions; optimal dilutions/concentrations should be determined by the end user.

アプリケーション	Abreviews	特記事項
WB		Use a concentration of 1 µg/ml. Predicted molecular weight: 38 kDa.

ターゲット情報

機能 Might be involved in complement regulation. Can associate with lipoproteins and may play a role

in lipid metabolism.

組織特異性

Expressed by the liver and secreted in plasma.

配列類似性

Contains 5 Sushi (CCP/SCR) domains.

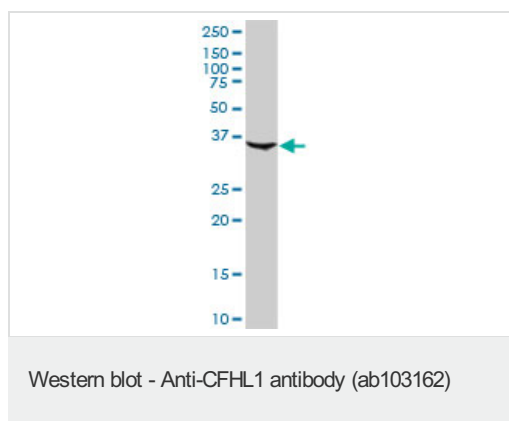
翻訳後修飾

N-glycosylated. Two forms are observed; one with a single side chain and the other with two.

細胞内局在

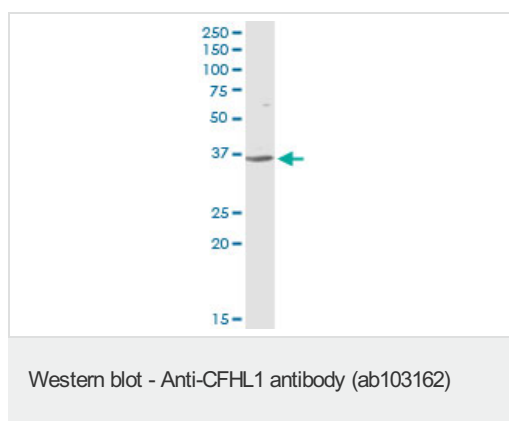
Secreted.

画像



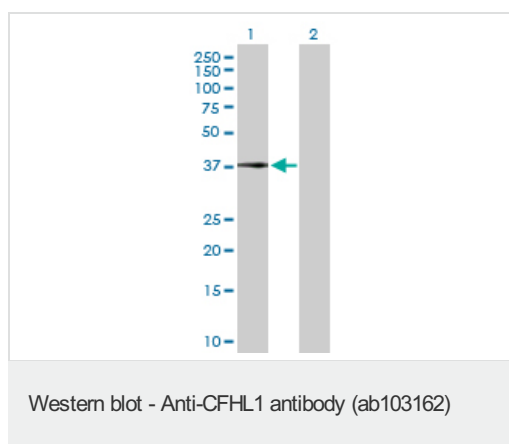
Anti-CFHR1 antibody (ab103162) at 1 µg/ml + Human liver lysate at 50 µg

Predicted band size: 38 kDa



Anti-CFHR1 antibody (ab103162) at 1 µg/ml + HeLa cell lysate at 50 µg

Predicted band size: 38 kDa



All lanes : Anti-CFHR1 antibody (ab103162) at 1 µg/ml

Lane 1 : CFHL1 transfected 293T cell lysate

Lane 2 : Non-transfected 293T cell lysate

Lysates/proteins at 25 µg per lane.

Predicted band size: 38 kDa

Please note: All products are "FOR RESEARCH USE ONLY AND ARE NOT INTENDED FOR DIAGNOSTIC OR THERAPEUTIC USE"

Our Abpromise to you: Quality guaranteed and expert technical support

- Replacement or refund for products not performing as stated on the datasheet
- Valid for 12 months from date of delivery
- Response to your inquiry within 24 hours

- We provide support in Chinese, English, French, German, Japanese and Spanish
- Extensive multi-media technical resources to help you
- We investigate all quality concerns to ensure our products perform to the highest standards

If the product does not perform as described on this datasheet, we will offer a refund or replacement. For full details of the Abpromise, please visit <https://www.abcam.co.jp/abpromise> or contact our technical team.

Terms and conditions

- Guarantee only valid for products bought direct from Abcam or one of our authorized distributors