


Product datasheet

Anti-GREM2 antibody ab102563

画像数 1

製品の概要

製品名	Anti-GREM2 antibody
製品の詳細	Rabbit polyclonal to GREM2
由来種	Rabbit
アプリケーション	適用あり: WB
種交差性	交差種: Human 交差が予測される動物種: Mouse, Rat, Horse, Chicken, Guinea pig, Cat, Dog 
免疫原	Synthetic peptide corresponding to a region within N terminal amino acids 1-50 (MFWKLSLSLF LVAVLVKVAE ARKNRPAGAI PSPYKDSSN NSERWQHQIK) of Human GREM2 (NP_071914). Run BLAST with ExPASy Run BLAST with NCBI
ポジティブ・コントロール	721_B cell lysate

製品の特性

製品の状態	Liquid
保存方法	Shipped at 4°C. Upon delivery aliquot and store at -20°C. Avoid repeated freeze / thaw cycles.
バッファー	Preservative: 0.09% Sodium azide Constituents: 2% Sucrose, PBS
精製度	Immunogen affinity purified
ポリ/モノ	ポリクローナル
アイソタイプ	IgG

アプリケーション

Our [Abpromise guarantee](#) covers the use of **ab102563** in the following tested applications.

The application notes include recommended starting dilutions; optimal dilutions/concentrations should be determined by the end user.

アプリ ケーショ ン	Abreviews	特記事項
------------------	-----------	------

WB Use a concentration of 1 µg/ml. Predicted molecular weight: 19 kDa. Can be blocked with [Human GREM2 peptide \(ab131363\)](#). Good results were obtained when blocked with 5% non-fat dry milk in 0.05% PBS-T.

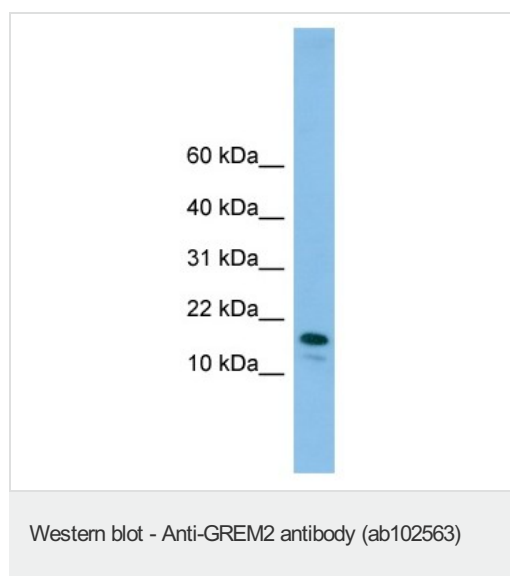
ターゲット情報

機能 Cytokine that inhibits the activity of BMP2 and BMP4 in a dose-dependent manner. Antagonized BMP4-induced suppression of progesterone production in granulosa cells.

配列類似性 Belongs to the DAN family.
Contains 1 CTCK (C-terminal cystine knot-like) domain.

細胞内局在 Secreted.

画像



Anti-GREM2 antibody (ab102563) at 1 µg/ml + 721_B cell lysate at 10 µg

Predicted band size: 19 kDa

Gel concentration: 10-20%

Please note: All products are "FOR RESEARCH USE ONLY AND ARE NOT INTENDED FOR DIAGNOSTIC OR THERAPEUTIC USE"

Our Abpromise to you: Quality guaranteed and expert technical support

- Replacement or refund for products not performing as stated on the datasheet
- Valid for 12 months from date of delivery
- Response to your inquiry within 24 hours
- We provide support in Chinese, English, French, German, Japanese and Spanish
- Extensive multi-media technical resources to help you
- We investigate all quality concerns to ensure our products perform to the highest standards

If the product does not perform as described on this datasheet, we will offer a refund or replacement. For full details of the Abpromise, please visit <https://www.abcam.co.jp/abpromise> or contact our technical team.

Terms and conditions

- Guarantee only valid for products bought direct from Abcam or one of our authorized distributors