

## Product datasheet

# Anti-AFAP antibody ab101961

### 画像数 1

#### 製品の概要

製品名	Anti-AFAP antibody
製品の詳細	Rabbit polyclonal to AFAP
由来種	Rabbit
アプリケーション	適用あり: WB
種交差性	交差種: Human 交差が予測される動物種: Mouse, Rat, Rabbit, Horse, Chicken, Guinea pig, Cow, Cat, Dog, Zebrafish
免疫原	Synthetic peptide corresponding to a region within amino acids 301-350 (QVKRKKSSKS EAKGTVSKVT GKKITKIISL GKKKPSTDEQ TSSAEEDVPT) of Human AFAP(NP_940997). <a href="#">Run BLAST with ExPASy</a> <a href="#">Run BLAST with NCBI</a>

#### 製品の特性

製品の状態	Liquid
保存方法	Shipped at 4°C. Upon delivery aliquot and store at -20°C. Avoid repeated freeze / thaw cycles.
バッファー	Preservative: None Constituents: 2% Sucrose, PBS
精製度	Immunogen affinity purified
ポリモノ	ポリクローナル
アイソタイプ	IgG

#### アプリケーション

Our [Abpromise guarantee](#) covers the use of **ab101961** in the following tested applications.

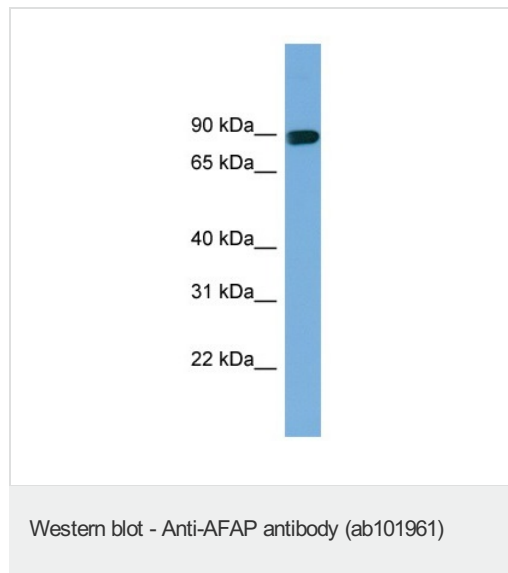
The application notes include recommended starting dilutions; optimal dilutions/concentrations should be determined by the end user.

アプリケーション	Abreviews	特記事項
WB		Use a concentration of 1 µg/ml. Predicted molecular weight: 81 kDa. Good results were obtained when blocked with 5% non-fat dry milk in 0.05% PBS-T.

## ターゲット情報

<b>機能</b>	Can cross-link actin filaments into both network and bundle structures (By similarity). May modulate changes in actin filament integrity and induce lamellipodia formation. May function as an adapter molecule that links other proteins, such as SRC and PKC to the actin cytoskeleton. Seems to play a role in the development and progression of prostate adenocarcinoma by regulating cell-matrix adhesions and migration in the cancer cells.
<b>組織特異性</b>	Low expression in normal breast epithelial cell line MCF-10A and in tumorigenic breast cancer cell lines MCF-7, T-47D and ZR75-1. Highly expressed in the invasive breast cancer cell lines MDA-MB-231 and MDA-MB-435. Overexpressed in prostate carcinoma.
<b>配列類似性</b>	Contains 2 PH domains.
<b>翻訳後修飾</b>	Phosphorylated on tyrosine residues by SRC.
<b>細胞内局在</b>	Cytoplasm > cytoskeleton. Localizes with stress fibers in quiescent cells, concentrated in cell motility structures such as lamellipodia, filopodia and membrane ruffles upon their induction.

## 画像



Anti-AFAP antibody (ab101961) at 1 µg +  
Human liver

**Predicted band size:** 81 kDa

**Please note:** All products are "FOR RESEARCH USE ONLY AND ARE NOT INTENDED FOR DIAGNOSTIC OR THERAPEUTIC USE"

## Our Abpromise to you: Quality guaranteed and expert technical support

- Replacement or refund for products not performing as stated on the datasheet
- Valid for 12 months from date of delivery
- Response to your inquiry within 24 hours
- We provide support in Chinese, English, French, German, Japanese and Spanish
- Extensive multi-media technical resources to help you
- We investigate all quality concerns to ensure our products perform to the highest standards

If the product does not perform as described on this datasheet, we will offer a refund or replacement. For full details of the Abpromise,

please visit <https://www.abcam.co.jp/abpromise> or contact our technical team.

## **Terms and conditions**

---

- Guarantee only valid for products bought direct from Abcam or one of our authorized distributors