

Product datasheet

Anti-West Nile Virus M glycoprotein antibody ab22070

★★★★☆ 1 Abreviews 3 References 画像数 2

製品の概要

製品名	Anti-West Nile Virus M glycoprotein antibody
製品の詳細	Rabbit polyclonal to West Nile Virus M glycoprotein
由来種	Rabbit
アプリケーション	適用あり: IHC-P, WB, ICC/IF
種交差性	Reacts with West Nile Virus. Not yet tested in other species.
免疫原	Synthetic peptide corresponding to West Nile Virus M glycoprotein aa 8-27. Sequence: GESTLANKKGAWLDSTKATR Run BLAST with Run BLAST with
ポジティブ・コントロール	West Nile virus infected cell lysate

製品の特性

製品の状態	Liquid
保存方法	Shipped at 4°C. Upon delivery aliquot and store at -20°C. Avoid freeze / thaw cycles.
バッファー	Preservative: 0.02% Sodium Azide Constituents: PBS
精製度	Protein G purified
ポリ/モノ	ポリクローナル
アイソタイプ	IgG

アプリケーション

Our [Abpromise guarantee](#) covers the use of **ab22070** in the following tested applications.

The application notes include recommended starting dilutions; optimal dilutions/concentrations should be determined by the end user.

アプリケーション	Abreviews	特記事項
IHC-P		Use a concentration of 1 µg/ml.

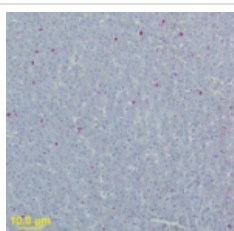
アプリケーション	Abreviews	特記事項
WB	★★★★☆	Use a concentration of 0.5 - 2 µg/ml. Detects a band of approximately 8 kDa.
ICC/IF		Use at an assay dependent concentration. PubMed: 17634508

ターゲット情報

関連性

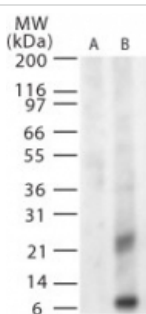
West Nile (WN), the most widespread among flaviviruses, was first isolated from the serum of a febrile woman in 1937 in the West Nile district of Uganda. West Nile virus was first detected in North America in 1999 and has subsequently spread throughout the United States and Canada and into Mexico and the Caribbean. In Africa, southern Europe, western Asia, and the United States, WNV has been isolated from mosquitoes of more than 40 species. In the United States, Canada, and Israel, WNV is responsible for significant avian mortality.

画像



Immunohistochemistry - Anti-West Nile Virus M glycoprotein antibody (ab22070)

IHC analysis of WNV-Envelope protein in bird liver using ab22070 at 1ug/ ml incubated for 30 minutes. A secondary conjugated to biotin was applied followed with streptavidin-AKP. The substrate was Fast Red chromagen. Image courtesy of Angela Ellis, University of Georgia College of Veterinary Medicine



Western blot - Anti-West Nile Virus M glycoprotein antibody (ab22070)

Western blot analysis of West Nile Virus glycoprotein M in (A) untransfected and (B) transfected cells using ab22070 at 1 ug/ml.

Western blot analysis of West Nile Virus glycoprotein M in (A) untransfected and (B) transfected cells using ab22070 at 1 ug/ml.

Please note: All products are "FOR RESEARCH USE ONLY AND ARE NOT INTENDED FOR DIAGNOSTIC OR THERAPEUTIC USE"

Our Promise to you: Quality guaranteed and expert technical support

- Replacement or refund for products not performing as stated on the datasheet

- Valid for 12 months from date of delivery
- Response to your inquiry within 24 hours

- We provide support in Chinese, English, French, German, Japanese and Spanish
- Extensive multi-media technical resources to help you
- We investigate all quality concerns to ensure our products perform to the highest standards

If the product does not perform as described on this datasheet, we will offer a refund or replacement. For full details of the Abpromise, please visit <https://www.abcam.co.jp/abpromise> or contact our technical team.

Terms and conditions

- Guarantee only valid for products bought direct from Abcam or one of our authorized distributors