


Product datasheet

Anti-WDR26 antibody ab85961

画像数 1

製品の概要

製品名	Anti-WDR26 antibody
製品の詳細	Rabbit polyclonal to WDR26
由来種	Rabbit
アプリケーション	適用あり: WB 適用なし: IP
種交差性	交差種: Human 交差が予測される動物種: Mouse, Rat, Rabbit, Horse, Chicken, Guinea pig, Cow, Dog, Turkey, Pig, Xenopus laevis, Chimpanzee, Rhesus monkey, Gorilla, Tilapia, Orangutan, Xenopus tropicalis, Medaka fish 
免疫原	Synthetic peptide, corresponding to a region between amino acids 150-200 of human WDR26.
ポジティブ・コントロール	HeLa cell lysate

製品の特性

製品の状態	Liquid
保存方法	Shipped at 4°C. Upon delivery aliquot and store at -20°C. Avoid freeze / thaw cycles.
バッファー	Preservative: 0.09% Sodium Azide Constituents: Tris citrate/phosphate, pH 7-8
精製度	Immunogen affinity purified
特記事項(精製)	Affinity purified using an epitope specific to WDR26 immobilized on solid support.
ポリ/モノ	ポリクローナル
アイソタイプ	IgG

アプリケーション

Our [Abpromise guarantee](#) covers the use of **ab85961** in the following tested applications.

The application notes include recommended starting dilutions; optimal dilutions/concentrations should be determined by the end user.

アプリケーション	Abreviews	特記事項
----------	-----------	------

WB 1/2000 - 1/10000. Predicted molecular weight: 72 kDa.

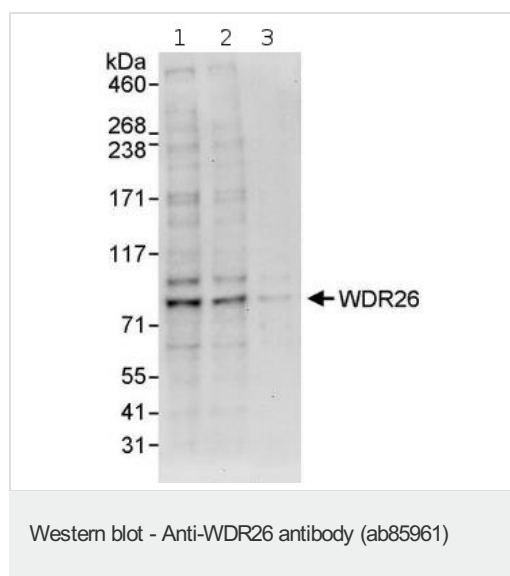
追加情報 Is unsuitable for IP.

ターゲット情報

関連性 The WDR26 gene encodes a member of the WD repeat protein family. WD repeats are minimally conserved regions of approximately 40 amino acids, which are typically bracketed by gly-his and trp-asp (GH-WD). WD repeats may facilitate formation of heterotrimeric or multiprotein complexes. Members of this family are involved in a variety of cellular processes, including cell cycle progression, signal transduction, apoptosis, and gene regulation. Two transcript variants encoding two different isoforms have been found for this gene.

細胞内局在 Cytoplasmic

画像



All lanes : Anti-WDR26 antibody (ab85961)
at 0.4 µg/ml

Lane 1 : HeLa whole cell lysate at 50 µg

Lane 2 : HeLa whole cell lysate at 15 µg

Lane 3 : HeLa whole cell lysate at 5 µg

Developed using the ECL technique.

Predicted band size: 72 kDa

Observed band size: 72 kDa

Exposure time: 30 seconds

Please note: All products are "FOR RESEARCH USE ONLY AND ARE NOT INTENDED FOR DIAGNOSTIC OR THERAPEUTIC USE"

Our Abpromise to you: Quality guaranteed and expert technical support

- Replacement or refund for products not performing as stated on the datasheet
- Valid for 12 months from date of delivery
- Response to your inquiry within 24 hours
- We provide support in Chinese, English, French, German, Japanese and Spanish
- Extensive multi-media technical resources to help you
- We investigate all quality concerns to ensure our products perform to the highest standards

If the product does not perform as described on this datasheet, we will offer a refund or replacement. For full details of the Abpromise, please visit <https://www.abcam.co.jp/abpromise> or contact our technical team.

Terms and conditions

- Guarantee only valid for products bought direct from Abcam or one of our authorized distributors