

Product datasheet

Anti-WDR23 antibody ab83559

★★★★☆ 1 Abreviews [画像数 1](#)

製品の概要

製品名	Anti-WDR23 antibody
製品の詳細	Rabbit polyclonal to WDR23
由来種	Rabbit
アプリケーション	適用あり: WB, ELISA, ICC/IF
種交差性	交差種: Human 交差が予測される動物種: Mouse, Rat, Rabbit, Horse, Guinea pig, Cow, Cat, Dog
免疫原	Synthetic peptide corresponding to a region within N terminal amino acids 2-51 (GSRNSSSAGSGSGDPSEGLPRRGAGLRRSEEEEEDEDEDVLAQVLAYLLR) of Human WDR23 (NP_079506). <div style="text-align: right;"> Run BLAST with Run BLAST with </div>
ポジティブ・コントロール	Human placental lysate

製品の特性

製品の状態	Liquid
保存方法	Shipped at 4°C. Upon delivery aliquot and store at -20°C. Avoid freeze / thaw cycles.
バッファー	Preservative: 0.09% Sodium azide Constituents: 2% Sucrose, PBS
精製度	Immunogen affinity purified
ポリ/モノ	ポリクローナル
アイソタイプ	IgG

アプリケーション

Our [Abpromise guarantee](#) covers the use of **ab83559** in the following tested applications.

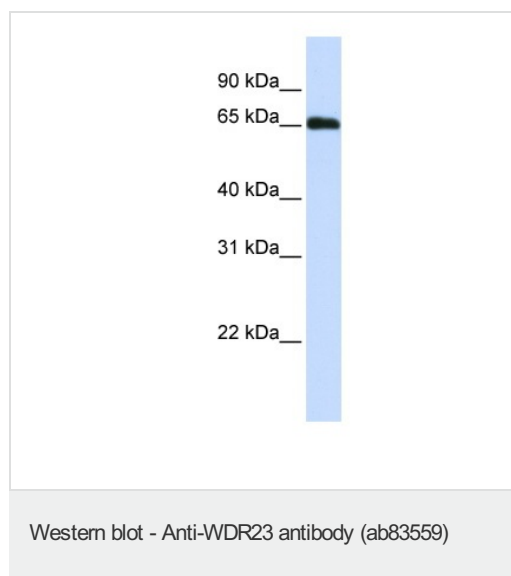
The application notes include recommended starting dilutions; optimal dilutions/concentrations should be determined by the end user.

アプリケーション	Abreviews	特記事項
WB		Use a concentration of 1 µg/ml. Predicted molecular weight: 62 kDa. Good results were obtained when blocked with 5% non-fat dry milk in 0.05% PBS-T.
ELISA		Use at an assay dependent concentration. Titer in peptide based assay is 1/312500.
ICC/IF		Use at an assay dependent dilution.

ターゲット情報

機能	May function as a substrate receptor for CUL4-DDB1 E3 ubiquitin-protein ligase complex.
パスウェイ	Protein modification; protein ubiquitination.
配列類似性	Contains 7 WD repeats.

画像



Anti-WDR23 antibody (ab83559) at 1 µg/ml
(in 5% skim milk / PBS buffer) + placental
lysate at 10 µg

Secondary

HRP conjugated anti-Rabbit IgG at 1/50000
dilution

Predicted band size: 62 kDa

Observed band size: 62 kDa

Gel concentration 12%

Please note: All products are "FOR RESEARCH USE ONLY AND ARE NOT INTENDED FOR DIAGNOSTIC OR THERAPEUTIC USE"

Our Abpromise to you: Quality guaranteed and expert technical support

- Replacement or refund for products not performing as stated on the datasheet
- Valid for 12 months from date of delivery
- Response to your inquiry within 24 hours
- We provide support in Chinese, English, French, German, Japanese and Spanish
- Extensive multi-media technical resources to help you

- We investigate all quality concerns to ensure our products perform to the highest standards

If the product does not perform as described on this datasheet, we will offer a refund or replacement. For full details of the Abpromise, please visit <https://www.abcam.co.jp/abpromise> or contact our technical team.

Terms and conditions

- Guarantee only valid for products bought direct from Abcam or one of our authorized distributors