

## Product datasheet

# Anti-WAPL antibody ab70741

★★★★☆ 1 Abreviews 1 References 画像数 2

### 製品の概要

製品名	Anti-WAPL antibody
製品の詳細	Rabbit polyclonal to WAPL
由来種	Rabbit
アプリケーション	適用あり: WB
種交差性	交差種: Human 交差が予測される動物種: Mouse, Rat, Rabbit, Horse, Chicken, Guinea pig, Cow, Dog, Turkey, Pig, Rhesus monkey, Gorilla, Platypus ▲
免疫原	Synthetic peptide corresponding to a region between residues 1125 and 1175 of human WAPL (SwissProt entry Q7Z5K2)
ポジティブ・コントロール	HeLa nuclear extract.

### 製品の特性

製品の状態	Liquid
保存方法	Shipped at 4°C. Upon delivery aliquot and store at -20°C. Avoid freeze / thaw cycles.
バッファー	Preservative: 0.09% Sodium azide Constituents: 1.815% Tris, 1.764% Sodium citrate, 0.021% PBS
精製度	Immunogen affinity purified
ポリ/モノ	ポリクローナル
アイソタイプ	IgG

### アプリケーション

Our [Abpromise guarantee](#) covers the use of **ab70741** in the following tested applications.

The application notes include recommended starting dilutions; optimal dilutions/concentrations should be determined by the end user.

アプリケーション	Abreviews	特記事項
WB	★★★★☆	1/2500 - 1/10000. Detects a band of approximately 175 kDa (predicted molecular weight: 133 kDa).

## ターゲット情報

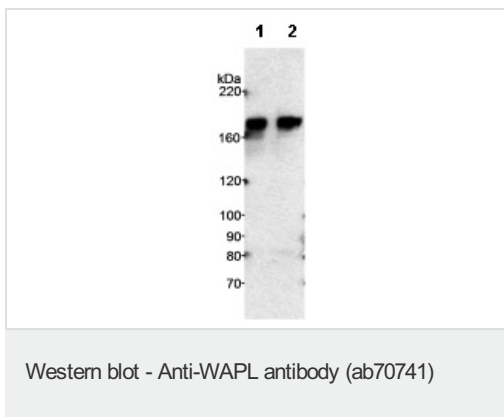
---

<b>機能</b>	Regulator of sister chromatid cohesion in mitosis which negatively regulates cohesin association with chromatin. Involved in both sister chromatid cohesion during interphase and sister-chromatid resolution during early stages of mitosis. Couples DNA replication to sister chromatid cohesion. Cohesion ensures that chromosome partitioning is accurate in both meiotic and mitotic cells and plays an important role in DNA repair.
<b>組織特異性</b>	Isoform 1 is highly expressed in uterine cervix tumor. Isoform 2 is widely expressed with a high level in skeletal muscle and heart.
<b>配列類似性</b>	Contains 1 WAPL domain.
<b>細胞内局在</b>	Nucleus and Nucleus. Chromosome. Cytoplasm. Associates with chromatin through the cohesin complex during interphase. Released in the cytoplasm from nuclear envelope breakdown until anaphase, it reaccumulates in nucleus at telophase.

---

## 画像

---



**All lanes :** Anti-WAPL antibody (ab70741) at 0.2 µg/ml

**Lane 1 :** HeLa nuclear extract at 5 µg

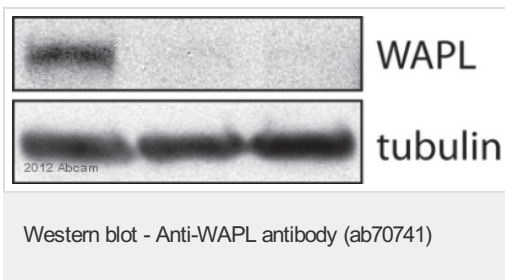
**Lane 2 :** HeLa nuclear extract at 20 µg

**Predicted band size:** 133 kDa

**Observed band size:** 175 kDa

**Exposure time:** 20 minutes

---



**All lanes** : Anti-WAPL antibody (ab70741) at 1/2000 dilution

**Lane 1** : Human U2OS cells

**Lane 2** : Human U2OS cells treated with siRNA #1 against WAPL.

**Lane 3** : Human U2OS cells treated with siRNA #2 against WAPL.

Lysates/proteins at 90 µg per lane.

#### **Secondary**

**All lanes** : Immunopure Pierce anti-rabbit HRP conjugated at 1/10000 dilution

Developed using the ECL technique.

Performed under reducing conditions.

**Predicted band size:** 133 kDa

**Observed band size:** 150 kDa

**Please note:** All products are "FOR RESEARCH USE ONLY AND ARE NOT INTENDED FOR DIAGNOSTIC OR THERAPEUTIC USE"

#### **Our Abpromise to you: Quality guaranteed and expert technical support**

- Replacement or refund for products not performing as stated on the datasheet
- Valid for 12 months from date of delivery
- Response to your inquiry within 24 hours
- We provide support in Chinese, English, French, German, Japanese and Spanish
- Extensive multi-media technical resources to help you
- We investigate all quality concerns to ensure our products perform to the highest standards

If the product does not perform as described on this datasheet, we will offer a refund or replacement. For full details of the Abpromise, please visit <https://www.abcam.co.jp/abpromise> or contact our technical team.

#### **Terms and conditions**

- Guarantee only valid for products bought direct from Abcam or one of our authorized distributors