

Product datasheet

Anti-WAPL antibody [EPR3407(2)] ab109537

リコンビナント RabMAb®

★★★★☆ 1 Abreviews 画像数 3

製品の概要

製品名	Anti-WAPL antibody [EPR3407(2)]
製品の詳細	Rabbit monoclonal [EPR3407(2)] to WAPL
由来種	Rabbit
アプリケーション	適用あり: WB, IP, ICC/IF 適用なし: Flow Cyt or IHC-P
種交差性	交差種: Human
免疫原	Synthetic peptide within Human WAPL aa 50-150. The exact sequence is proprietary.
ポジティブ・コントロール	HeLa, 293T, and Jurkat cell lysates. HeLa cells.
特記事項	Mouse, Rat: We have preliminary internal testing data to indicate this antibody may not react with these species. Please contact us for more information.

Our RabMAb® technology is a patented hybridoma-based technology for making rabbit monoclonal antibodies. For details on our patents, please refer to [RabMAb® patents](#)

This product is a recombinant rabbit monoclonal antibody.

製品の特性

製品の状態	Liquid
保存方法	Shipped at 4°C. Store at -20°C.
バッファー	pH: 7.20 Preservative: 0.05% Sodium azide Constituents: 0.1% BSA, 40% Glycerol, 9.85% Tris glycine, 50% Tissue culture supernatant
精製度	Tissue culture supernatant
ポリ/モノ	モノクローナル
クローン名	EPR3407(2)
アイソタイプ	IgG

アプリケーション

Our [Abpromise guarantee](#) covers the use of **ab109537** in the following tested applications.

The application notes include recommended starting dilutions; optimal dilutions/concentrations should be determined by the end user.

アプリケーション	Abreviews	特記事項
WB	★★★★☆	1/50000 - 1/200000. Predicted molecular weight: 133 kDa.
IP		1/10 - 1/100.
ICC/IF		1/100 - 1/250.

追加情報 Is unsuitable for Flow Cyt or IHC-P.

ターゲット情報

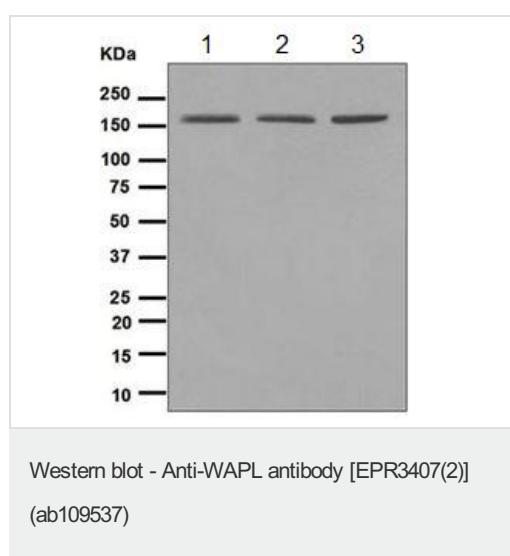
機能 Regulator of sister chromatid cohesion in mitosis which negatively regulates cohesin association with chromatin. Involved in both sister chromatid cohesion during interphase and sister-chromatid resolution during early stages of mitosis. Couples DNA replication to sister chromatid cohesion. Cohesion ensures that chromosome partitioning is accurate in both meiotic and mitotic cells and plays an important role in DNA repair.

組織特異性 Isoform 1 is highly expressed in uterine cervix tumor. Isoform 2 is widely expressed with a high level in skeletal muscle and heart.

配列類似性 Contains 1 WAPL domain.

細胞内局在 Nucleus and Nucleus. Chromosome. Cytoplasm. Associates with chromatin through the cohesin complex during interphase. Released in the cytoplasm from nuclear envelope breakdown until anaphase, it reaccumulates in nucleus at telophase.

画像



All lanes : Anti-WAPL antibody [EPR3407(2)] (ab109537) at 1/50000 dilution

Lane 1 : HeLa cell lysate

Lane 2 : 293T cell lysate

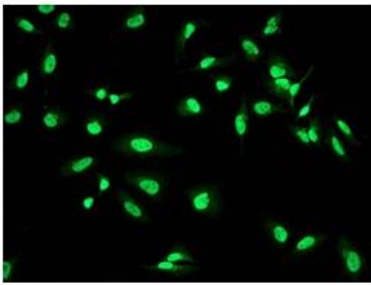
Lane 3 : Jurkat cell lysate

Lysates/proteins at 10 µg per lane.

Secondary

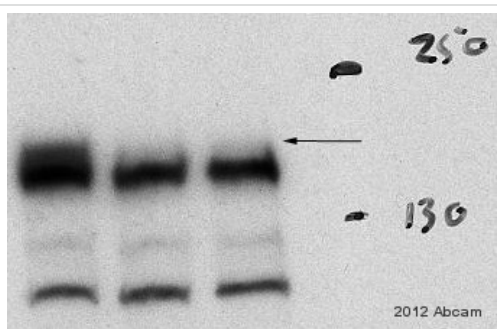
All lanes : HRP-labelled goat anti-rabbit at 1/2000 dilution

Predicted band size: 133 kDa



Immunocytochemistry/ Immunofluorescence - Anti-WAPL antibody [EPR3407(2)] (ab109537)

ab109537 at 1/100 dilution staining WAPL in HeLa (Human epithelial cell line from cervix adenocarcinoma) cells by Immunofluorescence.



Western blot - Anti-WAPL antibody [EPR3407(2)] (ab109537)

All lanes : Anti-WAPL antibody [EPR3407(2)] (ab109537) at 1/10000 dilution

Lane 1 : Human U2OS cells treated with siRNA control.

Lane 2 : Human U2OS cells treated with siRNA #1 against WAPL.

Lane 3 : Human U2OS cells treated with siRNA #2 against WAPL.

Lysates/proteins at 90 µg per lane.

Secondary

All lanes : Immunopure Pierce anti-rabbit HRP conjugated at 1/10000 dilution

Developed using the ECL technique.

Performed under reducing conditions.

Predicted band size: 133 kDa

Observed band size: 150 kDa

Additional bands at: 120 kDa (possible cross reactivity), 130 kDa (possible cross reactivity), 145 kDa (possible cross reactivity)

Please note: All products are "FOR RESEARCH USE ONLY AND ARE NOT INTENDED FOR DIAGNOSTIC OR THERAPEUTIC USE"

Our Promise to you: Quality guaranteed and expert technical support

- Replacement or refund for products not performing as stated on the datasheet

- Valid for 12 months from date of delivery
- Response to your inquiry within 24 hours

- We provide support in Chinese, English, French, German, Japanese and Spanish
- Extensive multi-media technical resources to help you
- We investigate all quality concerns to ensure our products perform to the highest standards

If the product does not perform as described on this datasheet, we will offer a refund or replacement. For full details of the Abpromise, please visit <https://www.abcam.co.jp/abpromise> or contact our technical team.

Terms and conditions

- Guarantee only valid for products bought direct from Abcam or one of our authorized distributors