

Product datasheet

Anti-Vesicle docking protein p115 antibody [EPR2140Y] ab68137

リコンビナント RabMAb®

1 References 画像数 1

製品の概要

製品名	Anti-Vesicle docking protein p115 antibody [EPR2140Y]
製品の詳細	Rabbit monoclonal [EPR2140Y] to Vesicle docking protein p115
由来種	Rabbit
アプリケーション	適用あり: WB, IP 適用なし: Flow Cyt, ICC or IHC-P
種交差性	交差種: Mouse, Rat, Human
免疫原	Synthetic peptide within Human Vesicle docking protein p115 aa 1-100 (N terminal). The exact sequence is proprietary.
ポジティブ・コントロール	HeLa cell lysate; 293T cell lysate; HepG2 cell lysate; Cos cell lysate
特記事項	

Our RabMAb® technology is a patented hybridoma-based technology for making rabbit monoclonal antibodies. For details on our patents, please refer to [RabMAb® patents](#)

This product is a recombinant rabbit monoclonal antibody.

製品の特性

製品の状態	Liquid
保存方法	Shipped at 4°C. Store at -20°C. Stable for 12 months at -20°C.
バッファー	pH: 7.40 Preservative: 0.01% Sodium azide Constituents: 9% PBS, 40% Glycerol, 0.05% BSA, 50% Tissue culture supernatant
精製度	Tissue culture supernatant
ポリ/モノ	モノクローナル
クローン名	EPR2140Y
アイソタイプ	IgG

アプリケーション

Our [Abpromise guarantee](#) covers the use of **ab68137** in the following tested applications.

The application notes include recommended starting dilutions; optimal dilutions/concentrations should be determined by the end user.

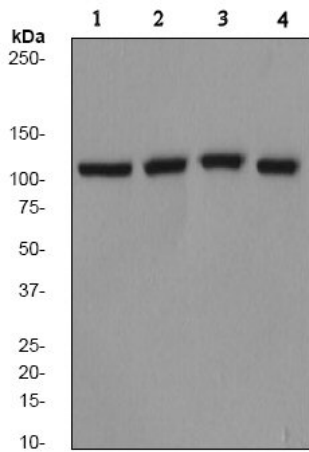
アプリケーション	Abreviews	特記事項
WB		1/1000 - 1/5000. Detects a band of approximately 108 kDa (predicted molecular weight: 108 kDa).
IP		1/30.

追加情報 Is unsuitable for Flow Cyt, ICC or IHC-P.

ターゲット情報

機能	General vesicular transport factor required for intercisternal transport in the Golgi stack; it is required for transcytotic fusion and/or subsequent binding of the vesicles to the target membrane. May well act as a vesicular anchor by interacting with the target membrane and holding the vesicular and target membranes in proximity.
配列類似性	Belongs to the VDP/USO1/EDE1 family. Contains 10 ARM repeats.
ドメイン	Composed of a globular head, an elongated tail (coiled-coil) and a highly acidic C-terminal domain.
翻訳後修飾	Phosphorylated in a cell cycle-specific manner; phosphorylated in interphase but not in mitotic cells. Dephosphorylated protein associates with the Golgi membrane; phosphorylation promotes dissociation.
細胞内局在	Cytoplasm > cytosol. Golgi apparatus membrane. Recycles between the cytosol and the Golgi apparatus during interphase. During interphase, the phosphorylated form is found exclusively in cytosol; the unphosphorylated form is associated with Golgi apparatus membranes.

画像



Western blot - Anti-Vesicle docking protein p115 antibody [EPR2140Y] (ab68137)

All lanes : Anti-Vesicle docking protein p115 antibody [EPR2140Y] (ab68137) at 1/500 dilution

Lane 1 : HeLa cell lysate

Lane 2 : 293T cell lysate

Lane 3 : HepG2 cell lysate

Lane 4 : Cos cell lysate

Lysates/proteins at 10 µg per lane.

Secondary

All lanes : HRP-labeled goat anti-rabbit at 1/2000 dilution

Predicted band size: 108 kDa

Observed band size: 108 kDa

Please note: All products are "FOR RESEARCH USE ONLY AND ARE NOT INTENDED FOR DIAGNOSTIC OR THERAPEUTIC USE"

Our Abpromise to you: Quality guaranteed and expert technical support

- Replacement or refund for products not performing as stated on the datasheet
- Valid for 12 months from date of delivery
- Response to your inquiry within 24 hours
- We provide support in Chinese, English, French, German, Japanese and Spanish
- Extensive multi-media technical resources to help you
- We investigate all quality concerns to ensure our products perform to the highest standards

If the product does not perform as described on this datasheet, we will offer a refund or replacement. For full details of the Abpromise, please visit <https://www.abcam.co.jp/abpromise> or contact our technical team.

Terms and conditions

- Guarantee only valid for products bought direct from Abcam or one of our authorized distributors